



Meadows Place is providing respite for Monarch butterflies enroute to Mexico during their annual migration thanks to the efforts of city officials, CenterPoint, Monarch Gateway and several nonprofit groups.

The city is the first permitted prairie restoration site in power line right of way, according to Barbara Keller-Willy, executive director and founder of Monarch Gateway and president of the Native Prairies Association of Texas.

As a Monarch Host City, Meadows Place is converting 13 acres of ROW to a pollinators' habitat, including milkweed on which Monarchs lay their eggs and caterpillars feed upon before they form a chrysalis.

Representatives of Wildlife Habitat Federation have treated the land for invasive plants and have seeded it with native plants to create a habitat for pollinators. But it's more than that. "It will bring back what we used to have - the animals and plants that existed at one time," said Jim Willis, president of Wildlife Habitat Federation.

The prairie land will provide many opportunities for education. Meadows Elementary will use it as a subject source for creative writing, science studies of habitat and life cycle, and in math they will use days of growth and development to create charts and math problems.

Texas ATM students and professors are currently involved in research and development of a low combustible seed mix as well as future data collection from the site. This site will also provide teaching clinics about monarchs, prairies, plant life and pollination.

A grand opening will be scheduled at the new trailhead located directly behind the fieldhouse in McGrath Park on October 5, during the Monarch Madness Festival at 10:00am.



MEADOWS ELEMENTARY BRICKS

Bricks from the Meadows Elementary building will be available to the first 250 households that would like one. The City of Meadows Place will make the bricks available on October 5 during the Monarch Madness Festival. The bricks are free and we recommend 1 per household so that all that would like a piece of history may have one.

10/5 Sat., 11:00am distribution @ McGrath Park on Brighton

BOX TOPS FOR SCHOOL

Continue clipping Box Tops until they expire and keep sending them to your school!

More good news: you can 'double dip' during the packaging transition by clipping the physical Box Tops AND scanning your receipt with those participating items.



HOW DO I REGISTER?

REGISTER

Our programs require pre-registration.

Forms can be found on-line at **cityofmeadowsplace.org** under the department tab / parks and recreation / programs. Make checks payable to City of Meadows Place then mail to, 1 Troyan Dr., Meadows Place, 77477

You may also register in person at City Hall, Monday thru Friday between 9am–4pm. If after hours place form & payment in the night drop box in the City Hall parking lot.

PARKS & RECREATION FALL PROGRAMS



October 25 FROM 7-9PM

Come enjoy the sounds and taste of Germany. Food Trucks will be on site offering German Fare, desserts and beer for purchase. The Texas Legacy Czech Band will be performing throughout the night along with youth / adult games and stein holding competition. No admission fees just bring a chair or blanket and enjoy a night out in Meadows Place.

10/25, 7-9pm @ McGrath Park



WINE TASTING

Sarah Fumo-Grignano will be offering another festive wine tasting class in November. Email lylanan@cityofmeadowplace.org for more details.

For program or event questions please contact lylanan@cityofmeadowsplace.org / 346.754.5873



HEALING WITH ESSENTIAL OIL

Come and join the free class and learn about the many benefits of essential oil. Mrs. Moa will discuss the perfect plan to meet your specific needs at any age. Samples will be provided.

10/5 – 10/26 Sat., @ Discovery Center,
11938 Amblewood, 1pm-2pm , FREE



FINANCIAL CONCEPTS

Come and join the free class and learn how to manage your finances from budgeting, future planning, savings and longterm care. New topic each week. Workbooks will be provided.

10/5 – 10/26 Sat., @ Discovery Center,
11938 Amblewood, 2pm-3pm, FREE



ATTENTION ALL HIGH-SCHOOL STUDENTS

Volunteer at Monarch Madness

FREE EVENT- BRING A FRIEND

October 5 / Saturday / 8am -3pm

12001 Brighton, Meadows Place



Come and learn what YAC is all about while having fun!

2019/2020 School year event will include:

- Camping Trip
- Volunteer At Monarch Festival, Christmas Memories, & Light the Night Spring Concert
- Food Drive
- Host A Glow Fun Run
- Beach Cleanup
- Grand Opening Of The Inclusive Playground

This is a youth run "National" organization. Teens set the schedule, and make the plans for service, volunteering and fun.

YAC is a great way to earn service hours and also include on your college application. There is no fee to join.

For program or event questions please contact lylanan@cityofmeadowsplace.org / 346.754.5873



Come visit the Nature Center and enjoy interacting with hands on activities and animal encounters.

Tues. – Fri., 9:30am - 2:30pm
Sat., 12pm - 5pm

\$2 child / \$5 adult / Annual \$10 child / \$15 adult
Fee includes access to facility and all activities.



Weekly Activities Include:

Tues. @ 10:30 – Mom & Tot meet up- explore, play

Wed. @ 10:30 – Tot Time- Stories and Puppets

Thurs. @ 10:30 –Meet the Animals or Make a Craft

***If you would like to feed the tortoise you may bring romaine, strawberries, apples.

Call 346-754-5897 for more information.



Nature Center Party packages are available to include animal encounters, crafts and activities.
Call for pricing and availability. 346-754-5873

TENNIS COURT / PICKLEBALL ACCESS

HEALTH,
WELL-BEING
& FITNESS



ESSENTIALS OF KAYAKING

This eco-friendly sport is recognized as the fastest growing sport in the world! Our lessons provide an introduction for the beginner paddler, the course is led by an ACA certified instructor who will share their love and passion for the water through this interactive experience. You will be taught the basics of safety, balance, paddling, and turns. Single and double kayaks are available.

REGISTER MUST Pre-Register

10/19, 8AM @ McGrath Park Lake (7yr & Up) \$15

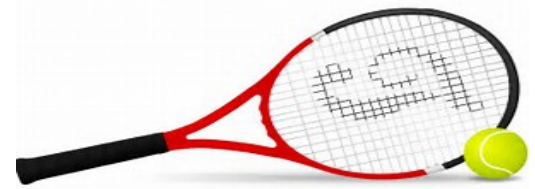
10/19, 9AM @ McGrath Park Lake – Open Kayak for those who have taken previous class –MUST EMAIL lylanan@cityofmeadowsplace.org Friday prior to reserve a kayak.



WALKING TRAILS

Enjoy walking or jogging along City of Meadows Place Trail System. Our trails wrap around McGrath lake through McDonald Park, across Dorrance along the bayou to Montecitto. Coming in October the trail system will continue along the bayou from the water treatment plant over to Kirkwood. Once the roundabout project is complete the trails will then meander down Kirkwood to West Airport.

.....



Resident Access Cards are available for purchase at City Hall, Monday – Friday 9am-4pm. Cards are valid through May of each year. **\$50 fee per year.**

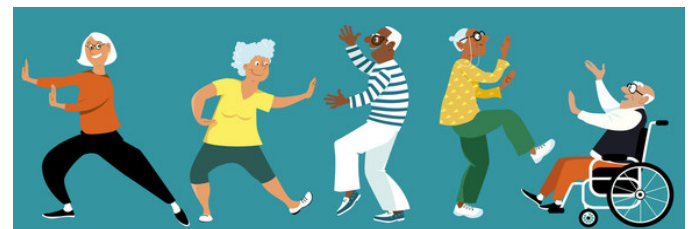
.....



YOUTH TENNIS LESSONS

This is an introductory class teaching form and the basics of the game for youths 14 years old and under. The classes will be taught in groups of 4 students. **Racquet required.** Email lylanan@cityofmeadowsplace.org for more information.

.....



TAI CHI EXERCISES

FOR BETTER MOVEMENT AND BALANCE

It is a moving meditation with 19 movements and one pose that are easy to learn and have profound effects. Benefits may include:

- Balanced physical energy and stamina;
- Building a healthy posture;
- Improving joint flexibility;
- Promoting spiritual serenity;
- Focusing your mind and awareness

REGISTER MUST Pre-Register

10/2 – 10/31 Mon / Wed / Fri @ Community Center, 11975 Dorrance, 9am – 10am, \$30



Come shake, shimmy, and dance those calories away!!!! A total workout, combining all elements of fitness – cardio, muscle conditioning, balance and flexibility, boosted energy and a serious dose of awesome each time you leave class.

REGISTER MUST Pre-Register

9/23 – 12/16, Mon., Community Center
7:45pm – 8:45pm, \$60, Walk In \$6



Active Adults meet Monday's at the Discovery Center for fellowship and fun. Come and meet our Active Adult Community.

10:00am – 1:00pm @ 11938 Amblewood

MONDAY, October 7-Game play / Book Club .

MONDAY, October 14-Field trip to Botanical Sanctuary Terrarium in the Heights and lunch at Bernies Burger Bus.

Email lylanan@cityofmeadowsplace.org by Oct 12th to RSVP your spot in the truck.

MONDAY, October 21-Safe email training and how to spot on-line scams.

Please email lylanan@cityofmeadowsplace.org by Oct. 17th to RSVP.

MONDAY, October 27-Come and play BINGO. Bring your quarters.



TAE-KWON-DO

Sharpen your mind, strengthen your body with Master Jenny Pless. She has been teaching in Meadows Place Community Center since 2005 and teaches all skill levels from basic to advanced.

REGISTER MUST Pre-Register

11/4 – 12/18

5-6pm (4-11 yrs.)

6-7pm (12 years and adult)

6 classes for \$40 (\$30 uniform fee)

12 classes for \$60



KARATE

American Society of Karate teaches American Karate to ages 5 – 70yr in a positive ever-changing system. Its goal is to not be the largest, but to be the best. Instructors: 4th Degree Black Belt, Steve Puma and 3rd Degree Black Belt, Michael Puma. Students may try the first class for free.

REGISTER MUST Pre-Register.

9/12 – 12/12 @ Community Center

Thursday 6:30- 7:30pm (5-12yr) \$50

Thursday 7:30- 8:30pm (13-70yr) \$50

\$30 Uniform Fee to Instructor.

OVER 50 & FIT

Strengthen your core muscles as well as improve stability and range of motion. Most exercises are done while sitting in a chair. All genders and ages are welcome.

10/1 – 10/31, T/TH, 10AM Community Center \$20

For program or event questions please contact lylanan@cityofmeadowsplace.org / 346.754.5873