



NOV. 25 - TOYS 4 TOTS

11/25 – 12/12, Drop off @ City Hall

The Marine Corp is hosting its annual toy drive and Meadows Place is a host site. Please drop off an unwrapped toy for toddler, children or teens.

NOV. 25 - SANTA'S MAILBOX

11/25-12/23 @ Discovery and Nature Center

Write a letter to Santa and place it in the North Pole mailbox in front of the Discovery & Nature Center. Santa's box will arrive 11/25 and leave in time for Christmas.

NOV. 28 – 29

CITY FACILITIES WILL BE CLOSED

DEC. 6 - CHRISTMAS MEMORIES

6pm @ McGrath Park, No Fee
Snow, Santa, Rides, Music, Food & More

DEC. 9 - RAINBOW TROUT STOCKING

Week of Dec. 9-13 @ McGrath Lake
Limit 5 Trout per person. ONLY keep trout.
RELEASE all other fish.

DEC. 23 @ 12noon – DEC. 25

CITY FACILITIES WILL BE CLOSED



NOV. 9 - HELFMAN PLAYGROUND FOR ALL

11am – 12 noon, 12037 Pender

Come celebrate the grand opening of the HELFMAN Playground for All. This project has been 3 years in the making. The Meadows Place YAC and Helfman Ford began fundraising to build a special place for kids with all abilities to play. Including monetary and in-kind support YAC was able to donate \$127,000. Special recognition will be given to Helfman Ford, YAC, Meadows PTO and H&H Landscape. Refreshments will be offered while supplies last.

NOV. 9 - CHRISTMAS MARKET

9am – 1pm, 11600 West Airport

Sugar Grove church of Christ will offer a Christmas Market with unique one of a kind gifts. 18 Fair Trade and Non Profits will sell items that can instill hope, restore dignity and help make a positive impact on families and communities. Be intentional, shop with a purpose!

NOV. 20 – GUIDING PROMISING STUDENTS

9:30am – 11:00am, 16431 Lexington Blvd

Meadows Elementary encourages you to join the FBISD "Crew". Attend 1 mandatory meeting to learn how you can help guide promising students. For more info. call 281-634-1109.



#128719386

PARKS & RECREATION FALL PROGRAMS



DROP IN SHOP

Get your holiday errands done or enjoy a relaxing night out while the kids are entertained in a fun and safe environment with the Meadows Place YAC Babysitters. Send the kids in their pajamas ready for an evening of fun.

Activities will include:
Decorate Holiday Cookies, make crafts, watch holiday movies, play fun games and enjoy a dinner of fresh fruit, baked chicken nuggets, and macaroni

REGISTER Must Pre-Register

\$15 per 1st and 2nd child, \$5 ea after that

11/15, 6pm –10pm @ Discovery Center (4yr+)
12/13, 6pm –10pm @ Discovery Center (4yr+)



Nature Center Party packages are available & include animal encounters, activities and decorations. 2 Party Host will be on hand to make your experience seamless.

Call for pricing and availability. 346-754-5873

For program or event questions please contact lylanan@cityofmeadowsplace.org / 346.754.5873



WINE TASTING

Wine Pairing Event that offers 4 different wine tasting paired with homemade Italian food, bursting with fall flavors! **Register by Nov. 13th.** Space is limited to 30 people.

REGISTER Must Pre-Register

11/16 Sat., @ Discovery Center
7:00-9:30pm, \$25 per person

Bottles of wine available for a suggested donation after the event. Bring your checkbook!



HEALING WITH ESSENTIAL OIL

Come and join the free class and learn about the many benefits of essential oil. Mrs. Moa will discuss the perfect plan to meet your specific needs at any age. Samples will be provided.

11/2 – 11/30 Sat., @ Discovery Center,
11938 Amblerwood, 1pm-2pm , FREE



Active Adults meet Monday's at the Discovery Center for fellowship and fun. Come and meet our Active Adult Community.

10:00am – 1:00pm @ 11938 Amblewood

- **MONDAY, November 4-**Game play and book club will meet to discuss *Forty Autumns* by Nina Willner.
- **MONDAY, November 11-** Join us as we try out Snooze Eatery at La Centerra. We will leave the Discovery Center at 11:30am.



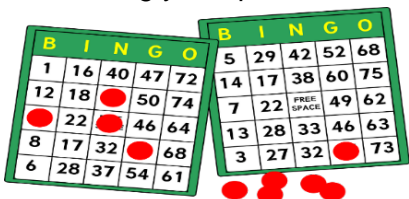
Email lylanan@cityofmeadowsplace.org by Nov. 15th to RSVP your spot in the truck.

- **MONDAY, November 18-** We are partnering up with Star of Hope to make care packages for the children living in their shelters and collecting blankets to give to the ones living on the street.



If you are interested in donating items or would like to assist in making the care packages, please email lylanan@cityofmeadowsplace.org.

- **MONDAY, November 25-**Come and play BINGO. Bring your quarters.



ATTENTION ALL HIGH-SCHOOL STUDENTS



Come and learn what YAC is all about while having fun!

2019/2020 School year event will include:

- Christmas Memories, & Light the Night Spring Concert
- Food Drive
- Host A Glow Fun Run
- Beach Cleanup
- Grand Opening Of The Inclusive Playground

This is a youth run "National" organization. Teens set the schedule, and make the plans for service, volunteering and fun.

YAC is a great way to earn service hours and also include on your college application. There is no fee to join.

NEXT MEETING:

- **Nov. 1, 7-9pm @ Community Center**
- **Nov. 9. 10am – 1pm @ Playground for All, 12037 Pender**

Text 281-642-7696 for more details



Come visit the Nature Center and enjoy hands on activities and animal encounters.

Tues. – Fri., 9:30am - 2:30pm

Sat., 12pm - 5pm

\$2 child / \$5 adult / Annual \$10 child / \$15 adult
Fee includes access to facility and all activities.



Planned Weekly Activities Include:

Tues. @ 10:30 – Mom & Tot meet up- explore, play

Wed. @ 10:30 – Tot Time- Stories and Puppets

Thurs. @ 10:30 –Meet the Animals

***If you would like to feed the tortoise you may bring romaine, strawberries, apples.

Call 346-754-5897 for more information.



Come shake, shimmy, and dance those calories away!!!! A total workout, combining all elements of fitness – cardio, muscle conditioning, balance and flexibility, boosted energy and a serious dose of awesome each time you leave class.

REGISTER MUST Pre-Register
9/23 – 12/16, Mon., Community Center
7:45pm – 8:45pm, \$60, Walk In \$6

**HEALTH,
WELL-BEING
& FITNESS**



ESSENTIALS OF KAYAKING

This eco-friendly sport is recognized as the fastest growing sport in the world! Our lessons provide an introduction for the beginner paddler, the course is led by an ACA certified instructor who will share their love and passion for the water through this interactive experience. You will be taught the basics of safety, balance, paddling, and turns. Single and double kayaks are available.

REGISTER MUST Pre-Register

11/16, 8AM @ McGrath Park Lake (7yr & Up) \$15

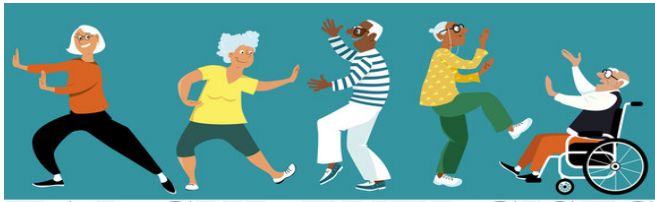
11/16, 9AM @ McGrath Park Lake – Open Kayak for those who have taken previous class –**MUST EMAIL lylanan@cityofmeadowsplace.org** Friday prior to reserve a kayak.



WALKING TRAILS

Visit our **NEW** trail along the bayou from the water treatment plant over to Kirkwood.

Enjoy walking or jogging along City of Meadows Place Trail System. Our trails wrap around McGrath lake through McDonald Park, across Dorrance along the bayou to Montecitto. Once the roundabout project is complete the trails will then meander down Kirkwood to West Airport.



TAI CHI EXERCISES

FOR BETTER MOVEMENT AND BALANCE

It is a moving meditation with 19 movements and one pose that are easy to learn and have profound effects. Benefits may include:

- Balanced physical energy and stamina;
- Building a healthy posture;
- Improving joint flexibility;
- Promoting spiritual serenity;
- Focusing your mind and awareness

REGISTER MUST Pre-Register

11/4 – 11/29, Mon / Wed / Fri @ Community Center, 11975 Dorrance, 9am – 10am, \$30

OVER 50 & FIT

Strengthen your core muscles as well as improve stability and range of motion. Most exercises are done while sitting in a chair. All genders and ages are welcome. **NO CLASS NOV. 28**

11/5 – 11/26, T/TH, 10AM Community Center \$20



KARATE

American Society of Karate teaches American Karate to ages 5 – 70yr in a positive ever-changing system. Its goal is to not be the largest, but to be the best. Instructors: 4th Degree Black Belt, Steve Puma and 3rd Degree Black Belt, Michael Puma. Students may try the first class for free.

REGISTER MUST Pre-Register.

9/12 – 12/12 @ Community Center

Thursday 6:30- 7:30pm (5-12yr) \$50

Thursday 7:30- 8:30pm (13-70yr) \$50

\$30 Uniform Fee to Instructor.

For program or event questions please contact lylanan@cityofmeadowsplace.org / 346.754.5873



TAE-KWON-DO

Sharpen your mind, strengthen your body with Master Jenny Pless. She has been teaching in Meadows Place Community Center since 2005 and teaches all skill levels from basic to advanced.

REGISTER MUST Pre-Register

11/4 – 12/18

5-6pm (4-11 yrs.)

6-7pm (12 years and adult)

6 classes for \$40 (\$30 uniform fee)

12 classes for \$60



YOUTH TENNIS LESSONS

This is an introductory class teaching form and the basics of the game for youths 14 years old and under. The classes will be taught in groups of 4 students. **Racquet required.** Email lylanan@cityofmeadowsplace.org for more info.



HOW DO I REGISTER? **REGISTER**

Our programs require pre-registration.

- Forms can be found on-line at cityofmeadowsplace.org under the department tab / parks and recreation / programs. Make checks payable to City of Meadows Place then mail to, 1 Troyan Dr., Meadows Place, 77477
- You may also register in person at City Hall, Monday thru Friday between 9am–4pm. If after hours place form & payment in the night drop box in the City Hall parking lot.