

## COMMENTS FROM THE MAYOR By Charles Jessup



### *Working toward the future - plus a Survey*

Last month your Council and I met with the purpose of looking toward the future. To look out some Twenty-Five years into the future and visualize the Meadows Place of 2024. It started somewhat slowly but quickly turned out to be an energetic and interesting meeting. A list of tasks to be completed, along with mileposts and

how to measure progress was compiled and broken down. This Council got VERY engaged and the ideas were being tossed out so fast it was making the recording of the list difficult for our City Secretary, but she managed. To their credit, the financial limitations and budget restrictions of budget were woven into all ideas and projects. Some of the tasks were to start in 15 or 20 years, but several are to start now, and some will be seen in next year's budget.

Part 2 of this process included getting input from our staff and Department Heads. Getting feedback from those with boots on the ground is always a good idea. Who knows better how to accomplish the day to day tasks than the person or persons actually doing the work. This input will help us discover the best, and most economical ways, to keep pushing the standards upward in Meadows Place and provide the best services and amenities without being wasteful.

Part 3 is the most important part of this process. It is designed to help us make sure the amenities and services we are planning are the same amenities and services the people of Meadows Place want. To help us gather this information the city will be conducting an online Survey. We plan to have this on our Survey Monkey platform which will have both open ended and multiple choice type questions. There will also be an area to give us feedback and input not otherwise addressed. This Survey should take place toward the end of July. We will notify you via a Code Red general information announcement, post it on the official Facebook Page and on our website. Please participate. Give us your input. Be part of deciding our future and make sure Meadows Place continues to be... **Your Place for Life.**

(Continued on page 3)

[www.cityofmeadowsplace.org](http://www.cityofmeadowsplace.org)

## IT'S HURRICANE SEASON!



### *Are you and your family prepared?*

## CITY CALENDAR

### Meadows Place

- July 4** **Independence Day** - City Hall Closed  
July 4th Parade 9:00 a.m.  
After Parade Celebration at McGrath Park
- July 2** **Joint Public Hearing & Special Meeting**
- July 19** **Barefoot N' Friday** - 8:30 p.m. at Pool  
**Junior Barefoot N'** - 8:30 p.m. at Community Center
- July 23** **Regular Council Meeting** - 6:30 p.m.

### Fort Bend ISD

- July 15** **Regular Board Meeting** - 6:00 p.m.

# Did You Know?...

**Did You Know...** Public Works Director Erik Tscahnz reported that several people alerted him that the Meadows Place sign along 59 at W. Airport had been struck by a truck. Erik went out and sure enough, the top left corner of the sign had been damaged. He contacted Warren Bryant with TxDot who got a replacement sign ordered right away. It should be up soon. Serving the community like this is just another way we keep Meadows Place... *Your Place for Life*.

**Did You Know...** James Fields sent an email that Meadows Place PONY Baseball fielded all-star teams for the Pinto (8U), Mustang (10U), and Bronco (12U) divisions for competition in the PONY baseball tournaments. These are the first games on the road to the PONY World Series. Their first two tournaments were June 21-23 and June 28-30. There are opportunities to advance depending on how they we do so let's root, root, root for Meadows Place Pony!!!

**Did You Know...** Meadows Place residents get free Notary Public services if they come to City Hall during normal business hours - 9 to 4 M-F

**Did You Know...** the Meadows Place Economic Development Corporation is updating the data about available business properties. One interesting tidbit of info is that the AADT- (Average Annual Daily Traffic) totals for the corner of West Belfort and Dairy Ashford is now 33,592 vehicles per day. Our EDC is hopeful this will be of interest and help bring a new business to the pad site by CVS. Keep your fingers crossed!

**Did You Know...** Alderman Kurt Kopczynski was spotted at James Coney Island notifying them that they were selected to be the Meadows Place Promotion of the Month. This means that JCI will be promoted on the MP Facebook Page and then in two weeks, the ad will be 'Boosted' to a those within 25 miles of Meadows Place. This was an EDC idea that the businesses really appreciate. It looked like Kurt was appreciating his lunch too!

**Did You Know...** former City Secretary Elaine Herff is a big baseball fan. Elaine has been spotted keeping score when she and her husband Wayne go to Skeeters games with David and Janet Piwonka.

**Did You Know...** Texas Lawn planted new summer color plants at City Hall. It looks great, projects a very professional image and represents the city well. Come take a look!

**Did You Know...** Meadows Place resident Rachel Cosby got the AAA Texas Travel Agent of the Month for May. She thanked all her customers but was, especially pleased to see letters of satisfied customers from Meadows Place. Husband David was very proud of her.

**Did You Know...** Meadows Home and Garden Club President, Joe DeBruyn let us know that he was excited about the meeting the Garden Club was having to go over plans for their Fourth of July float. Should be fun to see what they come up with because Joe really wants Garden Club to win Best Float!

**Did You Know...** The city has a great new 30 second 'Summer Camp' video promoting our exciting weekly Summer Camp program. It is posted it on website and City Facebook page. Check it out.

**Did You Know...** I recently read a "should I call the police" post on a social media page. I can't believe there people in Meadows Place who do not know that we have willing and engaged police department that want to respond to our calls- but we have to call! If you see anything that makes you uncomfortable, or if you have someone going door-to-door, Call the Police. Period. 281-983-2900.

**Did You Know...** is for YOU. To get something in Did You Know in 2018, drop us a note at City Hall or email: [mayor@cityofmeadowsplace.org](mailto:mayor@cityofmeadowsplace.org).

## Did You Know... Preparedness in Meadows Place

To be ever prepared, we put a natural gas generator at the EMS building by the Fire Station. This ensures we have power so Fire & EMS will have air conditioning, lights, power, etc., and be able to stay. This is an example of Meadows Place raising the standards for the outstanding First Responders that look after the City. Another example is the annual fire extinguisher testing program. Every extinguisher is located and tested, even the one in the Community Center closet. We also completed our Annual Load Bank Generator Testing at Water Well # 1 and Water Well # 3 (by our EOC) This is a very specific and thorough test and we were A-OK.

*(Comments From The Mayor continued from page 1)*

### **Permit Fees**

Thanks to your City Council, you have a new, simpler to use, schedule of permit fees. This was instigated by a legislative change in the way Texas cities can calculate Residential Permit Fees. The State of Texas passed House Bill No. 852 which prevents cities from using construction cost or improvement value for calculating Residential permit fees - and it took place immediately. This left cities across Texas scrambling to meet the parameters of the new law, us included. A frenzy of information and legal opinions were flying about. On June 6th, after reviewing the options, a Special Meeting was called. Your City Council responded to the pressure and updated its Schedule of Fees for Residential building permits. It was an impressive meeting with the focus of making life better for residents of Meadows Place at the forefront of the discussion. The new fees are on the website. As always, if you're not sure if a permit is needed just call the Permit Clerk at 281-983-2932. Thank You, and Thank You Council!

# **COP TALK**

By Chief Gary Stewart

## **Hurricane Season is Approaching**



With Hurricane season just around the corner and our experiences with Hurricane Harvey, the Meadows Place Police Department wants to remind everyone about all of the services available to our community in times of pending severe weather events and disasters. We encourage our residents to be proactive and prepare for the hurricane season by making the appropriate preparations for your family and pets. Remember, "It's better to look ahead and prepare than to look back and regret." Below is a list of resources available. We hope everyone will take full advantage of these valuable resources.

City of Meadows Place Facebook Page:  
<https://www.facebook.com/cityofmeadowsplace/>

CodeRed allows a user to sign-up for important notifications about the City of Meadows Place. This includes nonfiction about emergency services and evacuations prior to and during pending emergency events. To sign up for emergency notifications through CodeRed, please visit our City website and click on the CodeRed link:  
<http://cityofmeadowsplace.org/departments/police/codered/>

If you are a Texan who lives in an evacuation zone and you require special assistance to evacuate during a storm – including the elderly, people with disabilities, or those who simply will need a ride – call 2-1-1 to register for a ride.  
<http://www.texasonline.com/portal/tol/en/emergency/specialneeds>

Hurricane Preparedness: The Office of the Governor's website offers information on preparing for the storm, building an emergency kit, developing an emergency plan, and tracking the storm.  
<http://governor.state.tx.us/hurricane/>

The American Society for the Prevention of Cruelty to Animals (ASPCA) offers information about Disaster Preparedness for pets:  
<http://www.asPCA.org/pet-care/disaster-preparedness/>

American Red Cross:  
<http://www.redcross.org/tx/houston>

National Weather Service:  
<http://www.nws.noaa.gov/os/water/tadd/>

Neighborhood Watch Meeting May 16th, 2019 - 7:00pm  
Meadows Place Police Dept. Training Center  
11975 W. Airport Blvd.

## **MEADOWS PLACE COMMUNITY GARDEN**

**The Community Garden is FUN!!!**

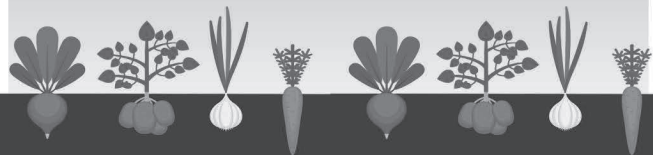
**Please join us  
on Garden Days!**

**We meet at the Community Garden  
Every 2nd & 4th Sat @ 9am.**

*You to can help our Community Garden Grow!*

 **MeadowsPlaceCommunityGarden**

**Email: MPcomGarden@gmail.com**





## 5 Tips to Save Water and Money!

By Erik Tschanz

**B**rown grass, dead shrubs, puny gardens — they're an eyesore for sure. But keeping your yard in pristine shape can be quite a burden, especially in the summer heat, when drought conditions are rampant. Here are seven tips to keep your yard looking its best, without wasting water.

### 1. Be sprinkler savvy

Your automatic sprinkler can be a huge help when it comes to keeping your yard looking its best, but it can also be a huge water — and money — waster. First, make sure your sprinklers are watering your lawn, not the driveway or road, and frequently check the system for leaks. Consider installing rain and/or moisture sensors that will turn sprinklers off if it's raining or if the ground is already saturated.

### 2. Water when it matters

Water your lawn only in the morning. In the heat of the day, that water will touch the surface and then quickly evaporate — leaving you with less than ideal results.

### 3. Use a drip system

For the ease of a sprinkler system but with far less waste, opt for a drip-irrigation system. With this type of system, a hose riddled with tiny holes is placed throughout your yard, allowing small amounts of water to seep directly into the ground over long periods — exactly what your yard needs to thrive.

### 4. Collect rainwater

Stock up on water when you can to use around your yard and garden. Turn gutters into your own personal watering system by directing them into much-needed areas in your yard. Or, install a rain barrel to collect the runoff from your gutters.

### 5. Adjust your lawn mower

No matter how unruly your yard looks, don't mow it down as low as it will go. Set your lawn mower blade a bit higher than usual, or at least 3 inches. Longer blades of grass shade each other, reducing some evaporation. Longer blades also mean longer roots, so the grass can reach water deeper than it normally would.

## Math - Physics - Chemistry

- Algebra
- Geometry
- Trigonometry
- Calculus
- Differential Equations
- Linear Algebra

### TUTORING

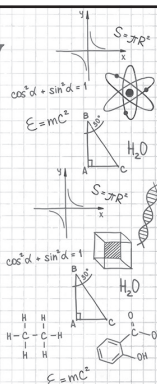
**STRAIGHT A's IN MATH & PHYSICS & CHEMISTRY**  
Tutor with straight A's as a Math Major UH Honors College  
Contact: Lucas Teague

**346-368-4305**

bubbletrain@hotmail.com

**\$ 30  
session**

**PLEASE GET IN TOUCH FOR  
GROUP RATES**



## BABYSITTING

by Naomi Teague

EXPERIENCED RELIABLE CARING FUN

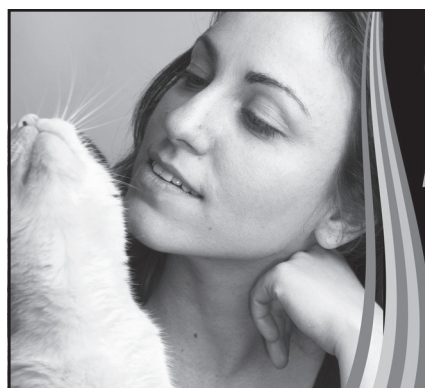
All Ages

Experience With Infants

NaomiTeague@gmail.com

863-60-8411

CALL FOR APPOINTMENT TODAY!



## Pet Sitter Amanda Teague

Serving Meadows Place  
& Sugar Land

863-606-8411

naomirteague@gmail.com

Reliable & Loving Person

## The Lawn Care Brothers

We Take Care of Your Lawn

- Mowing
- Edging
- Pulling Weeds
- Debris Removal
- Spring Cleanup
- Shrub & Bush Care
- Seeding/Aeration
- Landscaping



**FREE  
ESTIMATES!**

(863) 606-8411

Serving Meadows Place  
& Sugar Land

## Updated Fees for Residential Building Permits

The State of Texas has passed House Bill No. 852, that has preempted the City of Meadows Place from requiring construction cost or improvement value for calculating residential permit fees. On June 6th in Special Meeting the City Council updated its Schedule of Fees for residential building permits. Please see the new fees listed below. As always, if you're not sure if a permit is needed just call the Permit Clerk at 281-983-2932 or visit the City website, <https://cityofmeadowsplace.org/government/public-information/permits/>.

Residential Building Permit Fees:

Chapter 150: Buildings		
Application fee: Includes all new buildings, additions and/or improvements to existing buildings and property including residential and/or commercial - Preparation, issuance and signing of application		50.00
Minimum building permit fee		100.00
RESIDENTIAL BUILDING PERMIT FEES		
Type of Permit	Required Fee	MAXIMUM # OF INSPECTIONS
Accessory Building*	.80 per square foot	3
Additions or Remodels*	1.21 per square foot	3
Demolition Permit	\$250.00	1
Fences	\$100.00	2
Flatwork <= 150 square feet	\$100.00	2
Flatwork > 150 square feet	\$200.00	2
Foundation Repair*	\$250.00	2
New Residence*	1.12 per square foot	9
Reroofing	\$200.00	1
SPA	\$150.00	3
Swimming Pools*	\$400.00	4
Re-inspection Fee	\$75.00	
Additional Inspection	\$75.00	
*Residential Plan-checking Fees		
When a plan is required to be submitted, a plan-checking fee shall be paid to the Building Official at the time of submitting plans and specifications for checking.		Equal to one-half of the building permit fee. Plan-checking fee is in addition to the building permit fee.

# GARAGE SALE

## Dates for 2019:

Aug. 9 & 10

Nov. 8 & 9

Elder - Care Companion

Respite Care

Day, Evening, Wknd

Hourly Rates



**LOVING HANDS AND  
COMPASSIONATE HEARTS**

*Jeannette Doina* ♥♥♥

• [jdoina50@gmail.com](mailto:jdoina50@gmail.com)

**281-989-4170**

Personal Care

Lt. Housekeeping/Meals

## Code Enforcement

### GRASS and WEEDS

We have seen an uptick on grass and weeds violation all throughout the City because of our weather. As per **§91.039(A)-(B)** “It shall be unlawful for any person who shall own or occupy any lot or lots in the city to allow weeds and/or grass to grow on the lot or lots to a height of more than nine (9) inches. The requirements of this section apply to any public right-of-way or easement or portion thereof located on the real property or portion thereof required to be cut, including specifically the areas of any real property that extend to or abut upon any curb or paved portion of a public street, the area between a public sidewalk and a public street or highway, and ditches and drainage channels located thereon.”

At the same token, **§91.035 – Nuisance, Weeds and Offensive Conditions On Private Property**; “Whenever weeds, brush, rubbish and all other objectionable, unsightly and unsanitary matter of whatever nature shall exist, covering or partially covering the surface of any lots or parcels of any real estate situated within the city... is hereby declared to constitute a public nuisance, the prompt abatement of which is hereby declared to be a public necessity.”

The above ordinance **§91.035** is directed to the grass and/or weeds that is observed growing in between the cracks of concrete in our driveways and/or sidewalks. These are considered violations and must be abated. And although this specific violation (grass/weeds in between cracks of concrete) place a low priority in the extensive list of violations around the City, it is nonetheless a violation and must be corrected. If it is getting out of hand and/or a complaint is received for your property, you will be receiving a notice of violation sooner than later. So, we ask that you stay ahead of everyone and check your property for these violations and correct it as soon as possible.

**Tree Clearance** – as per **§130.07(B)**; minimum tree clearance (lowest tree limb) is at least 16 feet over any public street/pavement. This ordinance is enforced not only for aesthetics, **but more importantly for the fire trucks and other fire apparatus that responds to calls around the City.** None of us wants to damage any of these fire equipments while en route to an emergency because of our low hanging tree limbs. **If in an event it was determined that your tree is liable for the damaged caused to a fire truck because of its low clearance, you may be responsible for the damages that could reach well into the thousands of dollars!! So please check your trees before it is too late!**

### Keep in mind:

- You need to submit a permit application with the City **BEFORE** you start replacing your roof.
  - You may also need a permit **BEFORE** replacing/repairing your fence, depending on the scope of work.
  - Failure to submit proper permits before working **may result in citation and/or charges filed against you in Municipal Court.** When in doubt or unsure if you need a permit or not, please call Permits Department at (281) 983-2932 for assistance.
1. Please remember to keep trees cut and trimmed. **§130.07(B)** - It is unlawful for anyone to maintain trees, shrubs or other vegetative material upon a public street and/or public right-of-way less than the minimum clearance measured from the pavement to the lowest limb, branch or part thereof extending over the sidewalk and over the public street/pavement (**Sidewalk: not less than 10 feet and Public Street: not less than 16 feet**).
  2. Put our trash out only on trash days or **not more than 18 hours before** the next scheduled trash pickup. **This includes lawn clippings, so be sure to tell your Lawn Contractor! - §130.09(A).**

### Top Hits from May 16th to Jun. 14th:

Violation:	Warn/Cit:	Comply:
Grass/Weeds	48	25
Junked Vehicles	4	1
Tree Clearance	23	3
Trash Cans/Trash	28	23
Exterior Mildew/Repair	9	3
Totals	112	55

Karl Velasco, Code Enforcement Officer  
Office: 281-983-2938

Email: [code-enforcement@cityofmeadowsplace.org](mailto:code-enforcement@cityofmeadowsplace.org)

## *Classified & Advertising*

Anyone wishing to place an ad in the newsletter can contact City Hall for information. All ads are due by the second Friday of each month. The appearance of paid advertising is not an endorsement by the City.

- William Sutherland Handyman Repairs. Appliance, Electrical, Plumbing, Clean out sewer line from 2"-8" pipe. Power washing, interior/exterior, Carpentry work, Painting, Concrete, Tiles. Cell 713-384-2817.
- ONYX LANDSCAPE: Residential and Commercial total lawn care. Fertilization, flowerbeds, and mulch. Seasonal flowers, sod, tree trimming, tree removal, wood fence installation and repair. New sprinkler system installation and repair. Meadows Place resident, free estimates. Manuel – 281-865-6636.
- COMMERCIAL BROKERAGE SERVICES: I can help with an office, retail, or industrial lease. I can help you if you are looking to buy or sell a building or land. Over 30+ years of commercial real estate experience. Resident, Broker. Bob (281) 415-1205
- Retired 30 year mechanic. Will fix cars and cut lawns. Very Reasonable. Maintenance before catastrophe. Call Irishman Noel 281-804-1751.
- Pet/house sitting. 20 year resident of Meadows Place. 5 years experience. References gladly provided. 281.222.7731. Kim
- Pet Sitter, House Sitter, Bonded. Linda 713-302-6740 [lmssolutions.us@gmail.com](mailto:lmssolutions.us@gmail.com)
- Terries's Home Child Care has an opening for a Toddler Registered 28 years First Aid CPR. Breakfast lunch and snacks provided play room back yard play area lots of love and care 7:30 a.m.-5:30 p.m. Mon-Fri. Call Terrie 281-222-3640.
- AVON! Call me Belle. Resident 281-495-3297.
- Pet Sitting or dog walking. Ask for Chris. 281-561-5574
- Mary Kay Cosmetics Meadows Resident Carol Evans 281-933-8298
- I'm giving away free kittens. I live in Meadows Place. Call Rosalie 832-646-5396.

## *Home & Garden Club*

By Clyde Little, Publicity

New officers of the Home & Garden Club were installed May 17, 2019:

**President:** Joe DeBruyn

**President's Aide:** Margaret Sandlin

**1st VP (Programs):** Debbie LeBlanc

**2nd VP (Yearbook & Website):** Harriette Weymon

**3rd VP (Ways & Means):** Marie Niccolai and Beverly McMinn

**4th VP (Membership):** Cynthia Young

**Secretary:** Shirley Isbell

**Treasurer:** Bob Dybala

Winners of the "Yard of the Month" awards for June are as follows:

**Section I**  
Hilda B. Villarreal  
11519 Dorrance

**Section IV North**  
Mary Soto  
11914 Cedar Form Lane

**Section II**  
Lois Schalles  
11807 Meadowdale

**Section IV South**  
Drew & Danielle Comer  
12050 Sturdivant

**Section III**  
Cindy & Bud Poe  
12003 Meadowdale

**Section V**  
Ernesto & Roxana Ruiz  
12203 Meadow Park Ct.

For photos of the winners, go to the web page listed below.

The Garden Club's program year is from September 2019 through May 2020, with great speakers presenting highly interesting and useful information on home and garden care. We meet on the second Tuesday of each month beginning at 7:00 PM. Meetings will be held at the Nature Center at 11938 Amblewood.

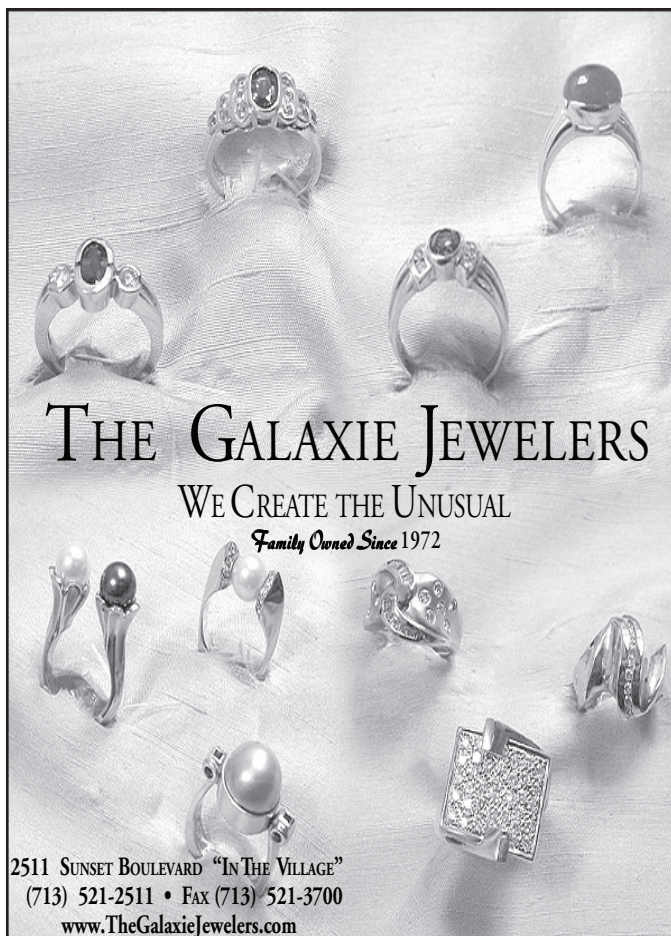
Please consider becoming a member of our club and supporting our many activities. Check out the "Club" page on our website.

Contact us via e-mail at:  
[meadowshomegardenclub@gmail.com](mailto:meadowshomegardenclub@gmail.com)

*Visit our web site today.*

**[Meadowshomegardenclub.com](http://Meadowshomegardenclub.com)**





**THE GALAXIE JEWELERS**  
 WE CREATE THE UNUSUAL  
*Family Owned Since 1972*

2511 SUNSET BOULEVARD "IN THE VILLAGE"  
 (713) 521-2511 • FAX (713) 521-3700  
[www.TheGalaxieJewelers.com](http://www.TheGalaxieJewelers.com)

**CRISSMAN'S**  
 AUTO REPAIR & SERVICE  
 FAMILY OWNED & OPERATED SINCE 1986



**281-261-2306**  
 13743 Stafford Rd. Stafford, TX 77477  
 Open Mon-Fri: 7:30 a.m. - 6 p.m.

## CONGRATULATIONS TO OUR ALL-STARS!



SHETLAND (6U): MATTY AUTREY, MICAH FIELDS, LIAM SANCHEZ, JASON LIRA, DECLAN MERKLEY, ANTHONY SANTOS, YARELI CASTILLO, JAYCE MATAMORAS, ADRIAN GOMEZ, JAFUS CAVIL, PIERCE PITRE, CARTER SEAPHUS  
 PINTO (8U): OWEN BENTLEY, ELI BINGHAM, FARRIS GOODING, JAYDEN PEREZ, JAIRO CASTILLO, ELLIOT FIELDS, EDISON MERKLEY, TROY VAN FOSSEN, DAMIAN HOPKINS, ADYN LEDAY, JAYCEE JONES, JEREMY JONES  
 MUSTANG (10U): MICHAEL HEADLEY, BECKET HUDDLE, CLAYTON PARKER, ERYC SANCHEZ, MICHAEL CHESCHEIR, ALEXANDER MENDEZ, JACE UHYREK, ZACHARY ZIMMERMAN, JOSHUA ALLISON, JAMES AUTREY, RAUL MOREDA, LONDON THORPE  
 BRONCO (12U): JACOB DIAZ, DAVIS HUDDLE, CHRISTIAN LIRA, LUCAS WATHEN, ADAM CASTRO, HENRY MARTINEZ, DANIEL OXLEY, ANDREW PETERSHAGEN, TANNER BAUMBACH, LUCKY ENGLEMAN, JACOB SALAS, MATTHEW SALGAR

## REGISTER NOW FOR FALL BASEBALL

AGES 4-12  
 GAMES PLAYED SEPTEMBER THROUGH  
 NOVEMBER



**WWW.MPPONY.ORG**  
 QUESTIONS? EMAIL US AT [INFO@MPPONY.ORG](mailto:info@mppony.org)



## *Annual Drinking Water Quality Report*

TX0790025

Annual Water Quality Report for the period of January 1 to December 31, 2018. This report is intended to provide you with important information about your drinking water and the efforts made by the water system to provide safe drinking water. Este reporte incluye informacion sobre el agua para tomar. Para asistencia en espanol, favor de llamar al telefono (281) 983-2961. The City of Meadows Place produces and distributes Ground Water. For more information about this report contact: Erik Tschanz, Public Works Director (281) 983-2961.

### **Sources of Drinking Water:**

The sources of drinking water (both tap water and bottled water) include rivers, lakes, streams, ponds, reservoirs, springs, and wells. As water travels over the surface of the land or through the ground, it dissolves naturally-occurring minerals and, in some cases, radioactive material, and can pick up substances resulting from the presence of animals or from human activity.

Drinking water, including bottled water, may reasonably be expected to contain at least small amounts of some contaminants. The presence of contaminants does not necessarily indicate that water poses a health risk. More information about contaminants and potential health effects can be obtained by calling the EPA's Safe Drinking Water Hotline at (800) 426-4791.

Contaminants that may be present in source water include:

- Microbial contaminants, such as viruses and bacteria, which may come from sewage treatment plants, septic systems, agricultural livestock operations, and wildlife.
- Inorganic contaminants, such as salts and metals, which can be naturally-occurring or result from urban storm water runoff, industrial or domestic wastewater discharges, oil and gas production, mining, or farming.
- Pesticides and herbicides, which may come from a variety of sources such as agriculture, urban storm water runoff, and residential uses.
- Organic chemical contaminants, including synthetic and volatile organic chemicals, which are by-products of industrial processes and petroleum production, and can also come from gas stations, urban storm water runoff, and septic systems.
- Radioactive contaminants, which can be naturally-occurring or be the result of oil and gas production and mining activities.

In order to ensure that tap water is safe to drink, EPA prescribes regulations which limit the amount of certain contaminants in water provided by public water systems. FDA regulations establish limits for contaminants in bottled water which must provide the same protection for public health. Contaminants may be found in drinking water that may cause taste, color, or odor problems. These types of problems are not necessarily causes for health concerns. For more information on taste, odor, or color of drinking water, please contact the system's business office.

You may be more vulnerable than the general population to certain microbial contaminants, such as *Cryptosporidium*, in drinking water. Infants, some elderly, or immunocompromised persons such as those undergoing chemotherapy for cancer; persons who have undergone organ transplants; those who are undergoing treatment with steroids; and people with HIV/AIDS or other immune system disorders, can be particularly at risk from infections. You should seek advice about drinking water from your physician or health care providers. Additional guidelines on appropriate means to lessen the risk of infection by *Cryptosporidium* are available from the Safe Drinking Water Hotline (800-426-4791).



If present, elevated levels of lead can cause serious health problems, especially for pregnant women and young children. Lead in drinking water is primarily from materials and components associated with service lines and home plumbing. We are responsible for providing high quality drinking water, but we cannot control the variety of materials used in plumbing components. When your water has been sitting for several hours, you can minimize the potential for lead exposure by flushing your tap for 30 seconds to 2 minutes before using water for drinking or cooking. If you are concerned about lead in your water, you may wish to have your water tested. Information on lead in drinking water, testing methods, and steps you can take to minimize exposure is available from the Safe Drinking Water Hotline or at [www.epa.gov/safewater/lead](http://www.epa.gov/safewater/lead).

## Definitions

*The following tables contain scientific terms and measures, some of which may require explanation.*

**Avg:** Regulatory compliance with some MCLs is based on running annual average of monthly samples.

**Action Level:** The concentration of a contaminate which, if exceeded, triggers treatment or other requirement which a water system must follow.

**Action Level Goal (AGL):** The level of contaminate in drinking water below which there is no known or expected risk to health. ALG's allow for a margin of safety.

**Level 1 Assessment:** A Level 1 assessment is a study of the water system to identify potential problems and determine (if possible) why total coliform bacteria have been found in our water system.

**Level 2 Assessment:** A Level 2 assessment is a very detailed study of the water system to identify potential problems and determine (if possible) why an E. coli MCL violation has occurred and/or why total coliform bacteria have been found in our water system on multiple occasions.

**Maximum Contaminant Level (MCL):** The highest level of a contaminant that is allowed in drinking water. MCLs are set as close to the MCLGs as feasible using the best available treatment technology.

**Maximum Contaminant Level Goal (MCLG):** The level of a contaminant in drinking water below which there is no known or expected health risk. MCLGs allow for a margin of safety.

**Maximum Residual Disinfectant Level (MRDL):** The highest level of a disinfectant allowed in drinking water. There is convincing evidence that addition of a disinfectant is necessary for control of microbial contaminants.

**Maximum Residual Disinfectant Level Goal (MRDLG):** The level of a drinking water disinfectant below which there is no known or expected risk to health. MRDLGs do not reflect the benefits of the use of disinfectants to control microbial contamination.

## Abbreviations

MFL	million fibers per liter (a measure of asbestos)
MREM	millirems per year (a measure of radiation absorbed by the body)
NA	not applicable
NTU	Nephelometric Turbidity Units (a measure of turbidity)
pCi/L	picocuries per liter (a measure of radioactivity)
ppb	micrograms per liter (µg/L) or parts per billion - or one ounce in 7,350,000 gallons of water
ppm	milligrams per liter (mg/L) or parts per million - or one ounce in 7,350 gallons of water.
ppt	parts per trillion, or nanograms per liter (ng/L)
ppq	parts per quadrillion, or picograms per liter (pq/L)
ND	Non detect, contaminant not detected n/a not applicable.
Treatment Technique or TT	A required process intended to reduce the level of a contaminate in drinking water.

## Lead and Copper

**ACTION LEVEL GOAL (ALG):** The level of a contaminant in drinking water below which there is no known or expected risk to health. ALGs allow for a margin of safety. **ACTION LEVEL:** The concentration of a contaminant which, if exceeded, triggers treatment or other requirements which a water system must follow.

Lead and Copper	Date Sampled	MCLG	Action Level (AL)	90th Percentile	# Sites Over AL	Units	Violation	Likely Source of Contamination
Copper	07/27/2016	1.3	1.3	0.138	0	ppm	N	Erosion of natural deposits; Leaching from wood preservatives; Corrosion of household plumbing systems.

## 2018 Water Quality Test Results

Disinfection By-Products	Collection Date	Highest Level or Average Detected	Range of Individual Samples	MCLG	MCL	Units	Violation	Likely Source of Contamination
Haloacetic Acids (HAA5)	2017	1	1 - 1	No goal for the total	60	ppb	N	By-product of drinking water disinfection.

\* The value in the Highest Level or Average Detected column is the highest average of all HAA5 sample results collected at a location over a year<sup>1</sup>

Inorganic Contaminants	Collection Date	Highest Level or Average Detected	Range of Individual Samples	MCLG	MCL	Units	Violation	Likely Source of Contamination
Arsenic	2/15/2017	6.7	6.2 - 6.7	0	10	ppb	N	Erosion of natural deposits; Runoff from orchards; Runoff from glass and electronics production wastes.

While your drinking water meets EPA standards for arsenic, it does contain low levels of arsenic. EPA's standard balances the current understanding of arsenic's possible health effects against the costs of removing arsenic from drinking water. EPA continues to research the health effects of low levels of arsenic, which is a mineral known to cause cancer in humans at high concentrations and is linked to other health effects such as skin damage and circulatory problems.

Barium	2/15/2017	0.232	0.231 - 0.232	2	2	ppm	N	Discharge of drilling wastes; Discharge from metal refineries; Erosion of natural deposits.
--------	-----------	-------	---------------	---	---	-----	---	---

Fluoride	2/15/2017	0.22	0.21 - 0.22	4	4.0	ppm	N	Erosion of natural deposits; Water additive which promotes strong teeth; Discharge from fertilizer and aluminum factories.
----------	-----------	------	-------------	---	-----	-----	---	--

Nitrate [measured as Nitrogen]	2018	0.19	0.14 - 0.19	10	10	ppm	N	Runoff from fertilizer use; Leaching from septic tanks, sewage; Erosion of natural deposits
--------------------------------	------	------	-------------	----	----	-----	---	---

Selenium	2018	20	8.4 - 34.9	50	50	ppb	N	Discharge from petroleum and metal refineries; Erosion of natural deposits; Discharge from mines.
----------	------	----	------------	----	----	-----	---	---

Radioactive Contaminants	Collection Date	Highest Level or Average Detected	Range of Individual Samples	MCLG	MCL	Units	Violation	Likely Source of Contamination
--------------------------	-----------------	-----------------------------------	-----------------------------	------	-----	-------	-----------	--------------------------------

Beta/photon emitters	2/15/2017	4.4	4.4 - 4.4	0	50	pCi/L*	N	Decay of natural and man-made deposits.
----------------------	-----------	-----	-----------	---	----	--------	---	---

\*EPA considers 50 pCi/L to be the level of concern for beta particles.

Combined Radium 226/228	2/15/2017	1.35	1.35 - 1.35	0	5	pCi/L	N	Erosion of natural deposits.
-------------------------	-----------	------	-------------	---	---	-------	---	------------------------------

Gross alpha excluding radon and uranium	2/15/2017	9.2	4 - 4	0	15	pCi/L	N	Erosion of natural deposits.
---	-----------	-----	-------	---	----	-------	---	------------------------------

Uranium	2/15/2017	8.1	8.1 - 8.1	0	30	ug/l	N	Erosion of natural deposits.
---------	-----------	-----	-----------	---	----	------	---	------------------------------

### Disinfectant Residual

Disinfectant Residual	Year	Average Level	Range of Levels Detected	MRDL	MRDLG	Unit of Measure	Violation (Y/N)	Source in Drinking Water
-----------------------	------	---------------	--------------------------	------	-------	-----------------	-----------------	--------------------------

Free Chlorine	2018	1.28	1.05 - 1.73	4	4	ppm	No	Water additive used to control microbes.
---------------	------	------	-------------	---	---	-----	----	--



## Do I need to take any special precautions?

Some people may be more vulnerable to contaminants in drinking water than the general population. Immunocompromised persons such as persons with cancer undergoing chemotherapy, persons who have undergone organ transplants, people with HIV/AIDS or other immune system disorders, some elderly, and infants can be particularly at risk from infections. These people should seek advice about drinking water from their health care providers. EPA/CDC guidelines on appropriate means to lessen the risk of infection by *Cryptosporidium* and other microbial contaminants are available from the Safe Drinking Water Hotline (800-426-4791).

## Information about Source Water Assessments

The TCEQ completed an assessment of your source water and results indicate that some of your sources are susceptible to certain contaminants. The sampling requirements for your water system are based on this susceptibility and previous sample data. Any detections of these contaminants may be found in this Consumer Confidence Report. For more information on source water assessments and protection efforts at our system, contact (Erik Tschanz, Public Works Director) (281) 983-2961.

For more information about your sources of water, please refer to the Source Water Assessment Viewer available at the following URL: [www.tceq.texas.gov/gis/swaview](http://www.tceq.texas.gov/gis/swaview)

Further details about sources and source-water assessments are available in Drinking Water Watch at the following URL: <http://dww2.tceq.texas.gov/DWW/>

Water Sources: Chicot Aquifer from Water Wells located within the City of Meadows Place, Texas.

<u>Water Source Name</u>	<u>Location</u>	<u>Type of Water</u>
1. 11803 S. Kirkwood	11803 S. Kirkwood	Ground Water
2. 12000 Stilles	12000 Stilles	Ground Water
3. 11975 W. Airport	11975 W. Airport	Ground Water

## System Susceptibility Summary

Asbestos – Medium

Cyanide – Low

Metals – High

Microbial – High

Minerals – High

Radiochemical – Low

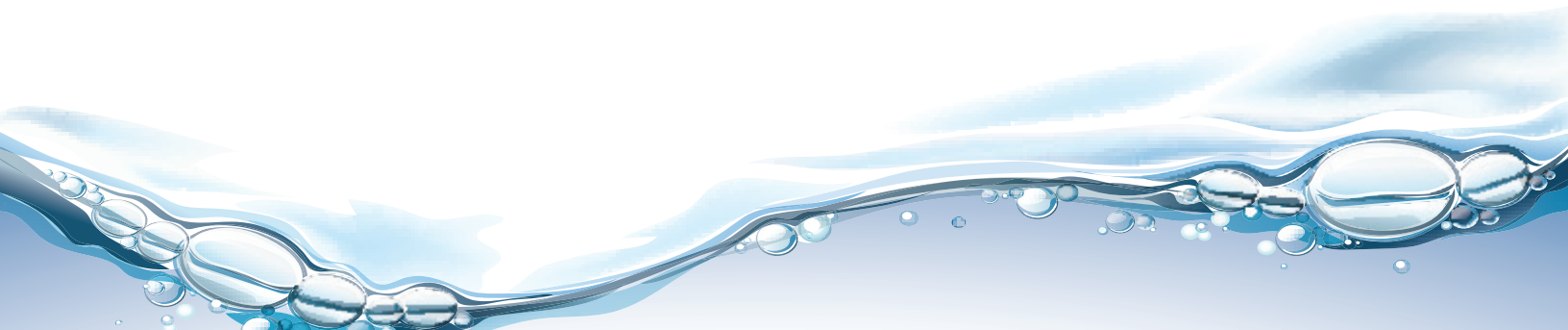
Synthetic Organic Chemicals – High

Disinfection Byproducts – Low

Volatile Organic Chemicals – Medium

Drinking Water Contaminate Candidate – High

Other – Medium



## MEADOWS PLACE



## PARKS & RECREATION



### MEADOWS PLACE 4<sup>th</sup> OF JULY PARADE

#### Earlier Start Time – 9:00AM

Join the fun during Meadows Place Annual 4<sup>th</sup> of July Parade @ 9am. There are several ways to participate in the fun. We are taking entries from those that would like to march, create a float, and decorate a golf cart, boat, or bike. We are also looking for anything unique such as unicycles, stilt walkers, musical instruments, etc.



Line up begins at Sugar Groves Church of Christ's east parking lot, 11600 W Airport. Enter from W Airport **ONLY** and check in with a parade official.

Parade route travels from City Hall to Dorrance to Mullholland, left on Mullholland then left on Brighton concluding at McGrath Park.

**Parade entry form can be found on the City website: [cityofmeadowsplace.org](http://cityofmeadowsplace.org). Return your entry form to City Hall before Monday, July 1.**

#### **ACTIVE MILITARY**

If you or an active duty family member would like to participate in our parade, please contact the Parks & Recreation Department by Monday, July 1.

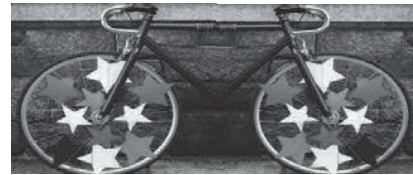
### PRIZES WILL BE AWARDED FOR :

**Youth      Spirit      Commercial      \*Neighbor**

Motorized entry judging will take place while in route in front of the Community Center. Prizes will be awarded in the above 4 categories at the conclusion of the parade @ McGrath Park.

#### **\*NEIGHBOR ENTRY**

Would you like to win a private pool party and pizza for 30? To qualify you must have at least 2 neighbors from Meadows Place enter as a group. The creativity is up to you. Neighbor entries are judged separately from the other categories. Please complete an application so the judges will score you appropriately. The group that wins will choose the date for the private party and pizza at MP Pool.



#### **BIKE PARADE**

Bike riders are a big part of the 4<sup>th</sup> of July Parade. No entry form required just show your patriotic spirit by decorating your bike and join the parade in the parking lot of Sugar Grove Church at 8am SHARP for judging. Judging for non-motorized entries begins at 8am SHARP at Sugar Grove Church.



#### **YARD DECORATING**

Show your patriotic spirit by decorating your yard in a red, white and blue theme. If you do not live along the parade route you must enter your address by calling 281.983.2934 or

[lylanan@cityofmeadowsplace.org](mailto:lylanan@cityofmeadowsplace.org).

#### **Judging will take place on July 3**

Home Depot Gift Card to 1<sup>st</sup>, 2<sup>nd</sup>, 3<sup>rd</sup> place yards.



**HOT DOGS -N- DONUT BURGERS**

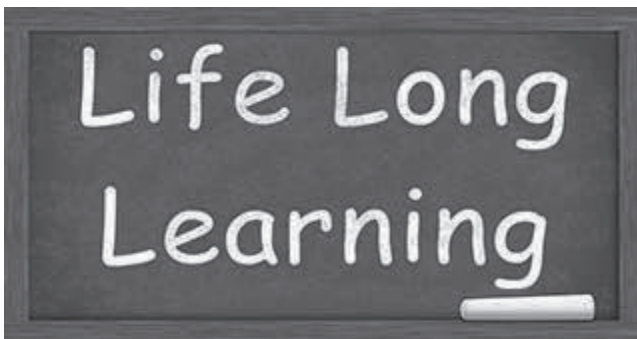
**FOOD TRUCK**

*Music*

**10:00am – 12:30pm  
McGrath Park**

## **MORE FUN AFTER JULY 4<sup>th</sup> PARADE**

Join us @ McGrath Park after the parade ends for more July 4<sup>th</sup> fun and listen to the sounds of a live band, food trucks, snow cones and splash pad fun. Concessions are available for a nominal fee.



## **HEALING WITH ESSENTIAL OIL**

Come and join the free class and learn about the many benefits of essential oil. Samples will be provided.

**7/6 – 7/27, Sat., @ Discovery Center  
1pm-2pm , FREE**

## **FINANCIAL CONCEPTS**

Come and join the free class and learn how to manage your finances from budgeting, future planning, savings and longterm care. New topic each week. Workbooks will be provided.

**7/6 – 7/27, Sat., @ Discovery Center  
2pm-3pm, FREE**

## **ITALIAN COOKING CLASS**

# **ItalianoSì**

**Italian Culture, Language & Cuisine**



Come and be a part of this hands on cooking class. Learn how to make mouthwatering Mushroom & Saffron Risotto! Samples will be available.

**Must register by July 17th**

**7/19, 8:30pm @ Discovery Center, \$10**



Active Adults meet Monday's at the Discovery Center for fellowship and fun. Come and meet our Active Adult Community from **10:00am – 1:00pm @ 11938 Ambleswood**

**MONDAY, July 1-** Game play and book club will meet to discuss, *The President is Missing* by Jane Patterson and Bill Clinton.

**MONDAY, July 8-** Do you have what it takes to win the title of Best Pie or Best Cake? If so, bring your best baked goods to the 3<sup>rd</sup> Annual Bake-Off!

**MONDAY, July 15-** Helen will be stopping by to talk about final expenses at 10:30am.

**MONDAY, July 22-** Field trip to Oceanstar Offshore Drilling Rig & Museum in Galveston. After the tour, we will have lunch at Benno's. We will leave at 9:00am. Please email [lylanan@cityofmeadowsplace.org](mailto:lylanan@cityofmeadowsplace.org) by July 18<sup>th</sup> to reserve a spot in the truck.

**MONDAY, June 24-** Come and play BINGO. Bring your quarters.





## SWIM LESSONS

Classes are taught by trained instructors and grouped by skill levels. Maximum of 5 students per class. Please read the swim level description below to determine the right swim level for your child. First day for each session is evaluation day. If your child needs to be moved, staff will notify the parent and move your child to the appropriate level (space pending). Because of space limit, read class description below and register your child into the right level at time of registration. **Please note: More often than not, a student may need to repeat a level several times before advancing**

**REGISTER** MUST Pre-Register

**Sessions: Tues - Fri**

Session 3: 7/9– 7/19 10am, 10:45am, 4pm, 4:45pm

Session 4: 7/23 –8/2 10am, 10:45am, 4pm, 4:45pm

### Fees:

Res -\$80/student/session / NR - 90/student/session

### Swim Level Description:

**Goldfish** (*Water comfort*)- Goldfish class will teach basic breathing and buoyancy. They will learn how to enter and exit the water properly and have the child comfortable in the water by themselves. *Swim diaper required for non-potty trained students*

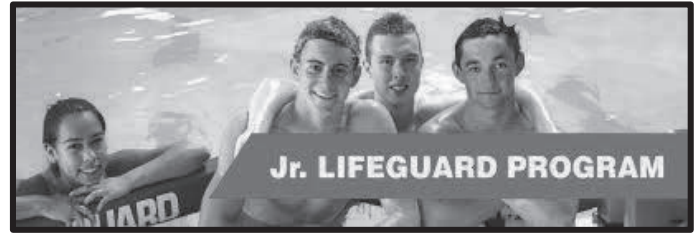
**Sea Lion** (*Basic technique*)- Sea Lion class will work on rhythmic breathing and retrieve submerged objects. They will learn basic arm motions and kicking.

**Otter** (*Skill development*)- Otter class will introduce the student to the deep water along with diving, strokes, and treading water.



## POOL WRISTBAND

Pool wristbands will be available throughout the summer for \$10 per band.. Wristbands can be purchased between 9am – 4pm at City Hall, Monday through Friday or at the community pool. Wristbands are for Meadows Place residents only. **Proof of residency is required.**



## JR LIFEGUARD PROGRAM

Would you like to become a Lifeguard someday? All Jr Lifeguards will be trained on proper scanning, hand signals, whistle blows and even rescues.

During week two Jr. Lifeguards will sit on stand and be a part of the rotation. Includes t-shirt, whistle, certificate of completion.

**\*Must be a good swimmer & 10 – 15yrs of age**

**REGISTER** MUST Pre-Register

7/2 – 7/5 Training / 11 am – 12 pm

7/9 – 7/12 Stand Rotation / 11 am or 3 pm

7/2 – 7/12, Tues – Fri, \$40, Community Pool



## AQUA FIT

This is a sixty-minute cardiovascular workout in the pool, which utilizes water resistance to improve cardiovascular fitness, muscular endurance, and flexibility. You determine your own intensity level by deciding how hard to manipulate the water.

**REGISTER** MUST Pre-Register

7/2 – 7/30 @ 6:30-7:30 pm, T/TH. \$40/ 8 classes

## EARLY LAP SWIM

The lap pool will open from 7am to 8am on Tues and Thurs for folks who are interested in swimming laps before the crowd arrives. There **MUST** be a minimum of 4 registrants per session to make class

**REGISTER** MUST Pre-Register

7/2 – 7/30 @ 7:00 – 8:00am, T/TH. \$40/ 8 days

8/1 – 8/13 @ 7:00 – 8:00am, T/TH. \$20/4 days



Enjoy night swimming and music with your friends. Meadows Place Police Officers will be on duty throughout the event. Concessions available.

**7/19, 8/16 @ Community Pool,**  
**8:30 – 11pm / \$5 per child (Ages 9-14yrs)**

.....



## NEW! JUNIOR BAREFOOT N' FRIDAYS

A new event for kids ages 5-8yrs old who are not of age to attend BFF. Play Bingo to win a prize and then watch a movie with your buddy! Meadows Place Police Officers will be on duty throughout the event. Concessions available.

**7/19, 8/16 @ Community Center,**  
**8:30 – 11pm / \$5 per child (Ages 5-8yrs)**

.....



## HARRY POTTER ENGINEERING

Master the magic of Harry Potter using LEGO®! Build Diagon Alley in preparation for your trip to Hogwarts School of Witchcraft and Wizardry. Hop on your Broomstick and play Quidditch, duel the evil Lord Voldemort, and hone your magical skills while learning about Muggle (STEM) concepts.

**REGISTER MUST Pre-Register**

**8/5 – 8/9, 9:00 am - 12:00 pm (Mon-Fri) @**  
**Community Center, Ages 5- 12yr \$140**



## FULL / HALF DAY SUMMER CAMP

Meadows Place will now offer All Day Summer Camp! Each week will be themed with exciting and action-packed activities catered to the age group! We will offer arts and crafts, outdoor adventure, fishing, boating, swimming, adventure days, cooking, science labs, plant & animal interactions, field trips for the older group and more!

- Monday to Friday, 8am to 5pm Full Day;  
8am to 12:30pm Half Day
- Additional fee for early drop off

**REGISTER MUST Pre-Register** / Grades 1 – 6  
Week 6 – Stars & Stripes- July 1 **NO CAMP JULY 4**

Week 7 – Water Week-July 8

Week 8 – Inventor's Workshop – July 15

Week 9 – Adventureland – July 22

Week 10 – Reptiles & Amphibians – July 29

Week 11 - Movin N Groovin – August 5

**Full Day-\$130 Resident / \$155 Non-Resident;**  
**Half Day- \$70 Resident / \$95 Non-Resident;**  
**Camp fee is prorated for Week 1 & 6**

\*This camp is not a state licensed day-care

.....



## YOUTH COUNSELOR-IN-TRAINING

Counselors-In-Training (CITs) gain valuable training and experience by providing support to camp counselors and camp lead at camp. CITs will participate in lesson development training, assist the camp groups, learn how to teach activities, and lead games. T-shirt will be provided.

**Requirement:** Entering 7<sup>th</sup> grade thru 9<sup>th</sup> .

**REGISTER MUST Pre-Register**

**Weekly sessions / May 28 to August 5.**

**Half day week \$40 / Full day week \$80**



## MEADOWS PLACE

DISCOVERY & NATURE CENTER

Come visit the Nature Center and enjoy interacting with hands on activities and animal encounters.

Call 346-754-5897 for more information.

Tues. – Fri., 9:30am – 2:30pm  
Sat., 12pm-5pm

\$2 child / \$5 adult / Annual \$10 child / \$15 adult  
Fee includes access to facility and all activities

### Weekly Nature Center Activities Include:

Tues. @ 10:30 – Animal Parade - Dress Up / Learn

Wed. @ 10:30 – Tot Time- Stories and Puppets

Thurs.@ 10:30 –Meet the Animals or Make a Craft

\*\*\*If you would like to feed the tortoise you may bring romaine, strawberries, apples.



## NATURE BIRTHDAY PARTIES!

*Great fun. Bring friends. Meet animals. Help the planet.*

Nature Center Party packages are available to include animal encounters, crafts and activities.  
Call for pricing and availability. 346-754-5873



## TENNIS LESSONS

This is an introductory class teaching form and the basics of the game for youths 14 years old and under. The classes will be taught in groups of 4 students. **Racquet required.**

**REGISTER** MUST Pre-Register.

7/11 -7/25, TH, 9:30am – 10:30am (10–14yr) \$45

Private lessons for youth / adults upon request.

## TENNIS COURT / PICKLEBALL ACCESS



Resident Access Cards are available for purchase at City Hall, Monday – Friday 9am-4pm. Cards are valid through May of each year. **\$50 fee per year.**



## ESSENTIALS OF KAYAKING

This eco-friendly sport is recognized as the fastest growing sport in the world! Our lessons provide an introduction for the beginner paddler, the course is led by an ACA certified instructor who will share her love and passion for the water through this interactive experience. You will be taught the basics of safety, balance, paddling, and turns.

**REGISTER** MUST Pre-Register

7/20, 8AM @ McGrath Park Lake (7yr & Up) \$15

7/20 9AM @ McGrath Park Lake – Open Kayak for those who have taken previous class –FREE





## BOWLING

Meadows Place Ladies Bowling Team bowls every Wednesday morning, 9am @ Emerald Bowl; Come join the team, meet new friends and get active!

**Call: 281.498.8330**



Come shake, shimmy, and dance those calories away!!!! A total workout, combining all elements of fitness – cardio, muscle conditioning, balance and flexibility, boosted energy and a serious dose of awesome each time you leave class.

**NO CLASS JULY 4th**

**REGISTER MUST Pre-Register**

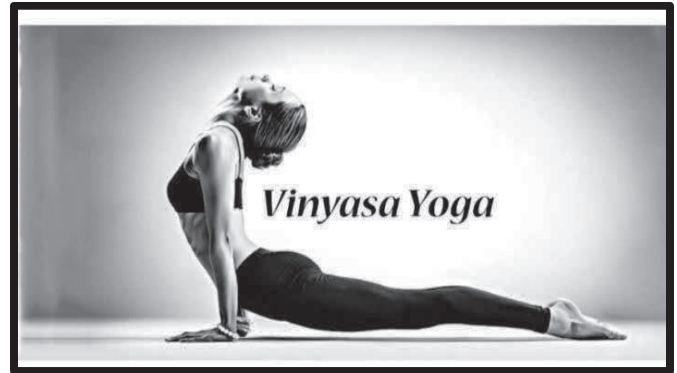
7/1 – 8/26, Mon., Community Center  
7/11 – 8/29, Thurs., Discovery Center  
6:45pm – 7:45pm, \$60, Walk In \$6

## OVER 50 & FIT

Strengthen your core muscles as well as improve stability and range of motion. Most exercises are done while sitting in a chair. All genders and ages are welcome.

**REGISTER**

7/2 – 7/30, T/TH, 10AM Community Center \$20



## FLOW YOGA

All level Vinyasa practice where poses are explored beyond the basic and at a faster pace. Appropriate for ambitious beginners and long time practitioners. Bring your own towel or mat. **(Space is limited)**

**REGISTER MUST Pre-Register**

7/11- 7/25, Th- 8pm @ Discovery Center, \$15



## TAI CHI CHIH

It is a moving meditation with 19 movements and one pose that are easy to learn and have profound effects. Benefits may include:

- Balanced physical energy and stamina;
- Building a healthy posture;
- Improving our joint flexibility;
- Promoting spiritual serenity;
- Focusing our mind and awareness

**REGISTER MUST Pre-Register**

7/1-7/31, Mon / Wed / Fri @ Community Center, 9am-10am, \$30



## TAEKWONDO

Sharpen your mind, strengthen your body with Master Jenny Pless. She has been teaching in Meadows Place Community Center since 2005 and teaches all skill levels from basic to advanced. **NO CLASS JULY 1 & 3**

**REGISTER** MUST Pre-Register

6/3 – 8/14

5-6pm (4-11 yrs.)

6-7pm (12 years and adult)

10 classes for \$60 (\$30 uniform fee)

20 classes for \$99 (Free uniform)



## KARATE

American Society of Karate teaches American Karate to ages 5 – 70yr in a positive ever-changing system. Its goal is to not be the largest, but to be the best. Instructors: 4<sup>th</sup> Degree Black Belt, Steve Puma and 3<sup>rd</sup> Degree Black Belt, Michael Puma. Students may try the first class for free.

**REGISTER** MUST Pre-Register. No class July 4.

6/13 – 8/22 @ Community Center

Thursday 6:30- 7:30pm (5-12yr) \$45

Thursday 7:30- 8:30pm (13-70yr) \$45

\$30 Uniform Fee to Instructor.



## HOW DO I REGISTER?

**REGISTER**

Our programs require pre-registration.

Forms can be found on-line at

**cityofmeadowsplace.org** under the department tab / parks and recreation / programs. Make checks payable to City of Meadows Place then mail to, 1 Trojan Dr., Meadows Place, 77477

You may also register in person at City Hall, Monday thru Friday between 9am–4pm. If after hours place form & payment in the night drop box in the City Hall parking lot.

**\*\*If a class has not met the minimum number of enrollment five (5) days prior to the start date, the class may be cancelled. Most classes have a maximum enrollment and are open on a first come, first serve basis. There will be no refund unless the class does not fill. Classes are NOT pro-rated unless stated. \*\***

## RENTALS

If you're looking for a location to host a celebration, lock in or family gathering, the Community Center and Garden is a great local option.

We also offer rentals of Covered Park Pavilions, Community Pool, Large BBQ Pit, & Kayaks.

**Call for pricing and availability. 346-754-5873**

**Free Estimates**

Visa, MC, Discover, AMEX

Commercial-Residential  
Insured

# ODD JOB FENCE COMPANY

*Fences Erected, Repaired & Rebuilt*

Tim Tate  
ttate006@gmail.com  
281-498-7256

Small, Big, Odd

P.O. Box 1985  
Stafford, TX 77477



**TAMARA L. MIHAIL**  
CPA, LLC  
TAX & ACCOUNTING SERVICES

Tammy Mihail, CPA  
President

Main 281.406.8984 | Cell 281.989.5361 | Fax 281.988.0967  
12135 Monticeto Lane | Meadows Place, Texas 77477  
Tammy@MihailCPA.com | www.MihailCPA.com

**Bugs bugging you?  
Buzz us!**

**Mr. Mike**  
PEST CONTROL



**FREE**  
Home  
Evaluations  
& Estimates  
Not valid for WDI reports

**\$100 OFF**  
Any Complete  
Termite Treatment  
With coupon.

**\$25 OFF**  
Ant & Flea  
Service  
With coupon.

**\$69<sup>00</sup>**

Initial  
Roach Service  
With coupon.

**\$99<sup>00</sup>**

House & Yard  
Spray O/S Only  
With coupon.

MEADOWS PLACE RESIDENT  
Locally Owned and Operated...

- ✓ 25 Years of Experience
- ✓ Termites & General Pests
- ✓ Free Inspections
- ✓ WDI Inspections/Reports
- ✓ Insured

Call or Text:

**281-610-1053**

MrMikePC@sbcglobal.net



*Offer Ends Soon - Call Today*

# ASTRO PLUMBING

*Repair & Remodel Experts*

Sewers & Drains · Water Lines · Water Heaters  
Kitchen & Bathroom Plumbing & Tile · Gas Lines / Testing  
Home Generators · Reroutes / Tunneling · Camera Inspection  
Walk-In Bathtubs Installed · Senior Discounts · Permits

**Free Estimates**

**CALL JOHNNY**

**Insured**

Master  
License  
16312



**713-256-0017**

30 Years Serving Bellaire, West University, SW Houston

**MENTION THIS AD AND RECEIVE \$20 OFF ANY SERVICE**





# Anita Milne

**BEARD REALTY GROUP PRESENTS MEADOWS PLACE  
HOMES ON THE MARKET FOR JULY**



**11819 Bloomington**



**11630 Kirkwood**



**11915 Dorrance**



**12122 Monticeto**



**Anita Milne**  
**(281) 413-9732**  
**[milneanita@yahoo.com](mailto:milneanita@yahoo.com)**



***I take the stress out of buying or selling your home!***



One Troyan Drive • Meadows Place, TX 77477  
www.cityofmeadowsplace.org

Prsrt Std  
U.S. Postage  
**PAID**  
Stafford, TX  
Permit No. 36

## City of Meadows Place

One Troyan Drive • Meadows Place, TX 77477  
(281) 983-2950 • Fax (281) 983-2940

**Charles D. Jessup, IV...MAYOR** ..... (281) 642-7702  
e-mail: mayor@cityofmeadowsplace.org

**John F. Isbell...MAYOR PRO TEMPORE**..... (804) 240-4982  
e-mail: alderman1@cityofmeadowsplace.org

**Steven H. Bezner...ALDERMAN 2** ..... (281) 401-9339  
e-mail: alderman2@cityofmeadowsplace.org

**Rick J. Staigle...ALDERMAN 3** ..... (713) 446-4566  
e-mail: alderman3@cityofmeadowsplace.org

**Kurt Kopczynski...ALDERMAN 4** ..... (281) 686-6078  
e-mail: alderman4@cityofmeadowsplace.org

**Kelle K. Mills...ALDERMAN 5** ..... (281) 933-0374  
e-mail: alderman5@cityofmeadowsplace.org

\*\*\*\*\*  
**Courtney Rutherford...CITY SECRETARY**..... (281) 983-2931  
e-mail: citysecretary@cityofmeadowsplace.org

\*\*\*\*\*  
EMERGENCY ..... 9-1-1  
CITY HALL ( 9:00 a.m. - 4:00 p.m.) Mon-Fri..... (281) 983-2950  
POLICE DEPARTMENT / 24 Hours..... (281) 983-2900  
FT. BEND COUNTY SHERIFF..... (281) 342-6116  
WATER AND SEWER ..... (832) 756-2143  
FT. BEND COUNTY COURTHOUSE ..... (281) 342-3411  
ANIMAL CONTROL..... (281) 342-1512  
PARKS AND RECREATION DEPARTMENT ..... (281) 983-2935  
\*\*\*\*\*

### Community Center Rental

Building Capacity 165

Rental includes tables and chairs to accommodate events

**Food/no alcohol.....\$275.00 Food/with alcohol.....\$375.00**  
(Cash deposit required)

**Community Pool Rental.....\$350.00**  
(after Community Hours, maximum rental time is 3 hours)

Non-Meadows Place residents add \$175.00 to above rates

**Resident Community Center/ Pool Combo Rental**  
Available May - August

Meadows Place residents receive a \$50 discount when renting  
the Community Center & Pool for the same event.

For rental reservation information, go to [cityofmeadowsplace.org](http://cityofmeadowsplace.org)  
click on Parks & Recreation, then Community Center

To check availability, call (346) 754-5873 or email:  
[lylanan@cityofmeadowsplace.org](mailto:lylanan@cityofmeadowsplace.org)

## Street Light Repair

When calling or emailing about a street light outage, you will need to get the pole number. You may request an email notification so Center Point can keep you apprised of the status of the repair request.

**1-800-332-7143**  
**[www.centerpointenergy.com](http://www.centerpointenergy.com)**

**(281) 342-8178**

M-Th: 8:00-5:00

F: 8:00-4:00

  
**TEXAS PRIDE**  
DISPOSAL

[www.texaspridedisposal.com](http://www.texaspridedisposal.com)  
[service@texaspridedisposal.com](mailto:service@texaspridedisposal.com)

## Storm Water Hotline

Report dumping in storm water drains.

Only **RAIN WATER** is allowed

281-983-2932 or report online, see website.

For updates on Public Works News visit the website.

[publicworks@cityofmeadowsplace.org](mailto:publicworks@cityofmeadowsplace.org)

