

Your  
Place for  
Life

City of  
**Meadows** PLACE

JULY 2012

**COMMENTS FROM THE MAYOR**  
By Charles Jessup



**Drug Shop Ordinance Passed**

I was doing research on economic development when I discovered some cities were experiencing problems caused by drug paraphernalia shops, some of which were even selling “legal” designer drugs - like the bath salts we have been hearing about. I began to check into it and discovered a situation that I was not too happy about, I didn’t like our position to control such businesses in Meadows Place. I set out to make sure that couldn’t happen here and sought legal counsel from our City Attorney (Grady Randle at Randle Law Office). Since we can’t just “outlaw” legal businesses, I proposed an ordinance which would require any such company to have a Special Use Permit. This will require any such “head shop” type business to apply for that permit from our Planning and Zoning Commission and then receive approval from our City Council. This ordinance was passed unanimously by your City Council so if you think this was a good thing, you might want to Thank them.

**Meadows Place has a new Police Chief**

Gary Stewart, Eighteen-year veteran of the Meadows Place Police Department, is our new Police Chief. Chief Stewart was selected by a three-person panel which included the Mayor, law enforcement expert Marshall Whichard and Meadows Place resident Judge Thomas Stansbury. The process included answering a series of difficult written questions, background and financial checks and a live panel interview. Selecting a new Police Chief from within our force was a popular decision with our officers who will help our new Chief make sure Meadows Place is safe, secure and continues to be...  
*Your Place for Life.*

(Continued on page 4)

[www.cityofmeadowsplace.org](http://www.cityofmeadowsplace.org)



**4th of July Parade**

The City of Meadows Place annual 4th of July Parade will be on **WEDNESDAY, JULY 4TH at 10:00A.M.** Make your plans now to be a part of the best hometown parade around. The honorable Charles Jessup along with City Council members and their families will be a special part of the annual parade. This year’s Parade Marshal is Bob Stolting, former pilot of the AH 64A Apache Helicopter.

The Parks & Recreation Department will be issuing first place awards to the best youth, spirit and commercial entries. Awards will be presented at the conclusion of the parade at the cul-de-sac on Brighton. Get your neighbors together and plan your entry, size is not important. Patriotism, simplicity, originality, creativity and community spirit are what the judges like the best. The judge’s table will be set up at the Community Center to view all entries as they pass. All entries will be categorized and judged accordingly. Call the Parks & Recreation Department for an entry form or download one from the City website: [cityofmeadowsplace.org](http://cityofmeadowsplace.org). Please return your entry form as early as possible to help things run smoothly. **New this year, the parade will assemble near City Hall at One Troyan Drive.** Judging of the non-motorized entries, according to age groups, will take place at 9:30 am SHARP!

Awards will be given in each category. Non-motorized entries do not need to fill out an entry form. All you have to do is show up for the judging!

The parade travels from City Hall/Troyan Drive down Dorrance to Mulholland, left on Mulholland and left on Brighton to Mark McGrath Park & Lake.



**CITY CALENDAR**

**July 4** Happy Independence Day  
Parade starts at 10:00 a.m.  
City Hall Closed

**July 24** Regular City Council Meeting  
City Hall 7:30 p.m.

# Did You Know?...

**Did You Know...** our Public Works Director Dan McGraw was just interviewed by the Information Director of Ashbrook Simon-Harley, the people who built the special filter we use on the water we fill the lake with? They interviewed Dan because they are finding many other cities are interested in similar projects but aren't quite sure how he pulled it all together and made it work. They plan to use this interview internally but will also submit it to national water treatment publications. Way to go Dan! We'll keep you posted if we see the article pop up anywhere. But it doesn't stop there, during the course of the interview, the Kid Fish Tournament on August 18th was mentioned and now Ashbrook Simon-Hartley has offered to provide some giveaways and prizes for the tournament. Looks like Dan picked a good company to do business with.

**Did You Know...** Steve Jones' son Eric, a 2011 graduate of Texas A&M was just selected to become Northeast Texas Regional Sales Manager for AIMCO Global, out of Portland, Oregon?

Eric will be living in Dallas, calling on Dallas, Houston, and San Antonio, and all points east. I never get tired of these Meadows Place success stories. Oh, and Eric's daddy Steve says... Gig 'Em!

**Did You Know...** Shelly Brough wanted us to know Meadows Elementary made the news by winning a district wide contest designed to bring attention to Child Abuse? Meadows Elementary won 1st place for the job they did decorating the school as part of this project. For winning they received \$800. Congratulations Meadows Elementary!!!!

**Did You Know...** Fridays are heavy trash days? WCA, our trash company says Tuesdays are usually heavier because of weekends and yard work so if you can hold heavy trash until Friday, they would appreciate it. They have worked hard to be a good vendor for us, so if you can help them out, everyone would appreciate it. For more information on our trash and recycling policies, go to our website and look under Public Information.

**Did You Know...** we are looking into making a change in the way we operate our IT department? Like most of you, we are becoming more technologically dependent and are looking into (slowly) modernizing our computer systems and software. We are doing OK right now but are slowly falling behind, something we cannot afford to do. According to Capt. Ashton, our immediate need is to have system continuity, something we will be looking into first. Training for those of us not too tech savvy will follow. What is it they say... Technology is great - until it isn't.

**Did You Know...** Meadows Place Fire Station is being manned more often now? This is a move that Fire Chief DiCamillo says benefits everyone and he hopes to expand coverage even more in the future. On top of that, we are going to get an upgrade on the fire truck that calls our station home. That is because Stafford is receiving two new trucks and is rotating a newer truck to Meadows Place. Keeping up with today, moving into the future.

**Did You Know...** Our lifeguards received an "Exceed" rating on their last surprise audit? Being a life guard is a tough, serious position from which these young men and women learn and develop skills that not only serve us well now but will help them for the rest of their lives. This year we have another great group of young people looking out for our swimmers so it wouldn't surprise me to see some success stories about them in the future.

**Did You Know...** Texas Direct Auto - TDA - is supplying cars for our 4th of July parade? That is very nice of them. TDA is proving to be a very good corporate neighbor.

**Did You Know...** If you have someone YOU are proud of, or something of interest pertaining to Meadows Place, drop a Did You Know note at City Hall or email: [mayor@cityofmeadowsplace.org](mailto:mayor@cityofmeadowsplace.org). Thank You!

## Did You Know...

Meadows Place is being considered for a Texas Municipal League Municipal (TML) Excellence Award? We are being considered in three different categories for our new lake / reclaimed water project. This is a Statewide competition so our chances are probably as small as we are, but I am holding out hope that all the hard work Dan, Monya and everyone else put in pays off. TML will make the announcements in September. Keep your fingers crossed but rest assured of one thing, we will keep working hard and with your help, Meadows Place will always be... *Your Place for Life!*

# COP TALK

By Captain Jack Ashton

*The Meadows Place Police Department still sees too many child safety seat violations.  
Let's work together to keep our children safe!*

**B**elow are safety tips to assist in bigger or older children in using booster seats and seatbelts.

## **Booster Seats for Older, Bigger Kids**

- Use a booster seat with the vehicle lap AND shoulder safety belts until your child passes the Safety Belt Fit Test.
- Vehicle seat belts are designed to fit an average-sized adult. Children usually need a car seat or booster seat until they are about 4 feet 9 inches tall and weigh between 80 and 100 pounds to get the best protection from a seat belt. Many children will be between 8 and 12 years of age before they meet these heights and weights.

## **Tips on using booster seats:**

- Use a car seat or booster seat correctly in a back seat every time your child rides in a car.
- Booster seats are not installed the same way car seats are, a booster seat uses no harness. They sit on the vehicle seat and are used to properly position the adult seat belt for an older child.
- Never place the shoulder belt under the child's arm or behind the child's back.
- Be sure all occupants wear safety belts correctly every time. Children learn from adult role models.
- Tell all drivers who transport your bigger child that booster seat or car seat use is a must when your child is in their vehicle.
- Never leave children alone in a vehicle.

## **The Safety Belt Fit Test**

- Have your child sit in a back seat with their bottom and back against the vehicle's seat back. Do the child's knees bend at the seat's edge? If yes, go on. If not, the child must stay in a booster seat.
- Buckle the seat belt. Does the lap belt stay low on the hips? If yes, go on. If it rests on the soft part of the stomach, the child must stay in a booster seat.
- Look at the shoulder belt. Does it lay on the collarbone and shoulder? If yes, go on. If it is on the face or neck, the child must remain in a booster seat.

- Can the child maintain the correct seating position with the shoulder belt on the shoulder and the lap belt low across the hips? If yes, the child has passed the Safety Belt Fit Test. If no, the child should return to a booster seat and re-test in a month.

## **SEAT BELTS**

Once your child passes the Safety Belt Fit Test, require him or her to use seat belts in a back seat on every ride, whether or not you are there. A lap AND shoulder belt provides the best protection to your child and must be used on every ride.

- Move children from booster seats to seat belts in a back seat only after the child passes the Safety Belt Fit Test in every vehicle. Return your child to a booster seat if the safety belt does not fit perfectly.
- Use the Safety Belt Fit Test on any child you transport in your car.
- Make sure that everyone sits upright when using seat belts. Never let them lean against windows or car doors or lie down. Never put the shoulder belt under the arm or behind the back.
- Teach your child to use a seat belt in a back seat in every vehicle he or she uses. This is an important habit to establish when the child rides in vehicles unsupervised by you.
- All children under age 13 should ride properly restrained in a back seat.
- Wear your seat belt correctly every time you are in a car. Children learn from adult role models.



State lic. & insured  
#TACLB 010694E

FRED COMP  
Owner

## **CASUAL AIR & REFRIGERATION INC.**

13955 Murphy Road #117  
Stafford, Texas 77477

(281) 498-3900  
(713) 721-7800



## Code Enforcement



By Kathi Sutton

We all want to show pride in our community, and by displaying that pride we can also be building the values of our homes. I believe that we would all like to be considered “good” neighbors, and also have the same expectations of the family living next door. It’s difficult to know what expectations your neighbors have of you, and you also may not know what expectations the city also has, so I’ve put together a list of 10 common issues that some of you may not be familiar with.

**Solid Waste & Recycling:** Please be sure that you are not placing items curbside for collection any sooner than the evening ( after 5 pm) prior to pick-up. Trash days are Tuesdays & Fridays. Friday is heavy trash day & Recycling. Empty trash cans & recycle bins need to be removed from the curbside promptly the day that they are collected. Please do not store your cans & bins in public view during non-collection days.

**Trailers, Boats & RV’s:** Trailers, Boats & RV’s cannot be stored in public view. This includes BBQ’s on trailers.

**Grass & Weeds:** Grass & weeds cannot exceed 9 inches in height. Each resident also needs to keep the cracks of concrete clear from grass / weeds AND edging must be done along all edges of grass and concrete.

**Inoperable Vehicles:** Vehicles must be kept in good working condition, and must be legally registered and displaying a current registration and inspection sticker as required by law.

**Fences:** Fences must be maintained in good condition. If your fence is not structurally sound or has missing pickets then it needs to have maintenance performed.

**Animal Control Violations:** No dog may Run at Large within the city. Animal that are outside of their normal enclosure must be restrained by a leash and under the control of a capable owner or keeper. The maximum allowable number of pets per household is 4 (dogs & cats) over the age of 4 months.

**Stumps:** Tree stumps need to be cut flush with the natural grade or be removed.

**Inoperable Gas Light Posts:** Non-functioning gas lamps can pose a potential risk, and need to have the gas line capped by a licensed plumber prior to the removal of the lamp post.

**Signs:** Contractor signs cannot be displayed in yards.

**Junk, Trash & Debris:** Yards need to be kept clear of any accumulation of debris, which includes old newspapers or circulars. All yards ( front & rear ) are required to be kept in a sanitary manner.

It is very easy to be taken over by the speed in which your life is moving by, and by focusing yourself on completing your laundry list of tasks you may not notice someone who is in need. Please remember that we are a COMMUNITY. We have residents of every age and walk of life. A simple task of trimming back a tree branch 10 feet above the sidewalk may not be a problem for most people, but it is a huge obstacle for another. Please be mindful of your neighbor’s needs and offer assistance if you are able. You can also contact my office if you are not able to assist them and I will try to find them assistance when possible.

For additional information on Code Enforcement please check out our web page at [cityofmeadowsplace.org](http://cityofmeadowsplace.org).

(Comments From The Mayor continued from page 1)

## Welcome our new City Secretary - Yolanda Wilson.

I want to welcome our new City Secretary Yolanda Wilson. Yolanda joined the team on June 18th as Deputy City Secretary. She will assume the full role of City Secretary in August when Elaine Herff, the only City Secretary Meadows Place has ever had, retires. The position of City Secretary has several roles specifically defined by the Texas Legislature and several assumed roles here in the city. The City Secretary is also the focal point for Council and the one to ensure information is disseminated quickly and according to law. Yolanda, who lives in Missouri City and has a strong municipal background, will be working together with Elaine for a while to ensure a smooth transition for the city.

Elaine isn’t cutting the chord completely though. She will be staying on in a part time capacity as Treasurer, a function she currently performs in addition to her City Secretary duties. Time marches on and change is inevitable, but the future of Meadow Place looks brighter than ever because the greatest asset the city has...is you.



## Meet the Staff

### JASON REBSCH, Patrol Corporal



Jason Rebsch

Jason began his law enforcement career as a member of the United States Air Force Security Police for 3½ years. During his service to his country, Jason deployed in support of Operation Safe Haven in Panama. After leaving the Air Force, he began his civilian police career with the Spring ISD

Police in November, 1998. He left there after almost 2 years to work for the Spring Branch ISD Police from September of 2000 through April, 2006 – at which time he came to Meadows Place PD. Jason served here as a patrol officer until his promotion to Patrol Corporal in May of this year.

Prior to his arrival in Meadows Place, Jason served 4 years as a SWAT team member. He holds Texas Commission on Law Enforcement Officer Standards and Education certificates for Advanced Peace Officer and Instructor. He also is trained as an ALERRT Instructor (Advanced Law Enforcement Rapid Response Training), Advanced SWAT, and as a certified Hostage Negotiator. He is a member of the Texas Municipal Police Association and Texas Tactical Police Officers’ Association.

Jason is originally from San Angelo, Texas. He graduated from Hanau American High School in Hanau, West Germany - where his father worked for the U.S. government. He has also attended the University of Houston. He is married and has 1 daughter and 1 son. His interests include training in Brazilian Jiu-Jitsu, Mixed Martial Arts, and Muay Thai.

## *Splash Night*



While the pool opens the 3rd weekend in May each year, it is not really summer in Meadows Place until Splash Night. This annual event kicked off the vacation season with lots of family fun for residents. As always this was a great opportunity for people to meet others in the community and a great way to help those in need with food collections for the Hands of Christ Food Pantry at Sugar Grove Church of Christ.



Mother Nature delayed the water activities, but the Lifeguards & DJ entertained the crowd with lots of music & dancing. Other activities included treasure hunts, Oreo cookie stacking contest, the Lifeguard big splash competition, the rubber duck hunt, giant water slide, swimming and the Stafford Fire Department's Pumper Truck sprayed the pool. While everyone was enjoying the fun, family friendly jams were provided by DJ's Unlimited.

Mother Nature could not drown-out the great food of hamburgers and hot dogs. Monya Keenen, the Parks Director, worked this year with several great resident volunteers who did a super job cooking. The fabulous cooks were Jim & Caroline Creassor, Stephen Gray and Kari Warkentien; several members of the City Council were on hand to help, Aldermen Terry Henley, Terry Morgan, John Isbell along with Mayor Charles Jessup all helped out with the games & activities. Aquatic Director Tracey Spiller and the Lifeguards did a wonderful job of keeping everybody safe.

Thanks to the Monya & Geno from the Parks Department, Dan, Joe & Dan from Public Works & the Meadows Place Police Department and everyone else who helped to make Splash Night a great success!



## *Be a winner in Meadows Place*

Get into the patriotic spirit and show your **G**love of the country by decorating your yard in red, white and blue. If you do not live along the parade route and want to be judged, you must enter your address at City Hall, e-mail it to [parks3@cityofmeadowsplace.org](mailto:parks3@cityofmeadowsplace.org), or call the Parks Department at 281-983-2935. Judging will take place on July 3rd and winners will be announced after the parade on July 4th!



**1st, 2nd, and 3rd place winners will win a Home Depot gift card!**  
**Wednesday, July 4th at 10:00 AM.**

**The parade travels down Dorrance, then to Mulholland, and ends at the field house on Brighton.**

## *Attention Military Families!*



### **Active Personnel**

The City of Meadows Place would like to honor all its active military personnel. If you, or a family member will be in town on the 4th, we would like to have you participate in our 4th of July Parade.

### **Iraq & Afghanistan Vets**

If you served in either Afghanistan or Iraq, The City of Meadows Place wants you in our parade too. Please join us as our honored guests.

Contact the Parks Department no later than June 22 so arrangements can be made. Thank You...

## *Taking Care of Business*

**Our Business Neighbors are a very important part of the City. This column is dedicated to those businesses.**

Great News! Meadows Place is about to have a new business - and one that I hope you will enjoy. By the end of August, we should have a brand new Italian Restaurant named

### **PESTO**

Pesto will be located in the center at Kirkwood and Airport.  
*Buon Appetito!*



*Thank You*  
**Our businesses need, and deserve, our support**



## Joy of Generosity Drive

A client came into the Hands of Christ Food Pantry at Sugar Grove Church of Christ to pick up food and asked for toilet paper, there was only one roll. This moment sparked the idea for a toiletries drive, but how? Sugar Grove Church of Christ's theme for the 2012 year is Joy of Generosity. Sugar Grove contacted the Parks & Recreation Department and together came up with a unique idea. The 4th of July Parade is the Kick-off event for this on-going toiletries drive. Donations can be given to volunteers when the Sugar Grove Float passes by. Donations may also be brought to the Church or City Hall starting July 5th. What a way to show our Joy of Generosity!

Please help The City of Meadows Place and Sugar Grove Church of Christ as we collect toiletries for Fort Bend Community Members in need.

## Joy of Generosity Drive

**Kickoff Event • July 4, 2012 • During the Parade**

**Share your contribution as our float passes by**

### *Items needed:*

toilet paper / toothpaste / shampoo / diapers / wipes / soap

Collected items will be distributed by

***The Hands of Christ Pantry***

Starting July 5, items may also be dropped off at the following locations:

Sugar Grove Church of Christ: 11600 W Airport Blvd, Meadows Place, TX 77477

Meadows Place City Hall: One Troyan Drive, Meadows Place, TX 77477



## Legends and Diamonds Award

Fort Bend Legends and Diamonds Chair Linda Bell recognized The City of Meadows Place for its contribution toward making Fort Bend County the dynamic region it is today.

Special thanks to Linda Bell for chairing the committee and to the leadership of the Fort Bend HAR for making this event possible and especially recognizing the efforts of Meadows Place residents that make us - *Your Place for Life*.



*Drop by City Hall to see the 'Jewel' of an award we received!*



## Garage Sale Dates

**August**

10 & 11

**November**

9 & 10



## Ladies Night!

Oh yes its Ladies Night! Join us for good conversation and a movie.

**When:** Friday July 27

**Where:** Meadows Place Community Center

**Time:** 7:30 pm Social Hour / 8:30 pm Movie begins

**Fee:** \$5.00

Featured movie will be posted on the Marquee. Bring your friends, snacks, beverages/coolers, and a lounge chair and enjoy good company and a movie. Please email movie suggestions to parks3@cityofmeadowsplace.org.

## A.C.E.S.

### The Art of Conscious Evolution Studies

**Description:** This workshop is designed to help people maximize their innate intuition for practical use in their daily lives. We will study sections of the book The Art of Conscious Evolution and also do exercises which will help us learn to trust and follow our "gut" feelings.

**Who:** 14 years and older (no max)

**Where:** Meadows Place Community Center

**When:** July 13, 2012

**Time:** 7:00pm **Cost:** \$35.00 per person

*Pre-registration is required to participate in all classes. Forms can be picked up at City Hall M-F 9:00 a.m. - 4:00 p.m. or printed off the City website [www.cityofmeadowsplace.org](http://www.cityofmeadowsplace.org)*

**Additional Info:** No supplies required. Books may be purchased @ \$15.00 but copies will be available for use by attendees at no charge.

**Instructor:** Peggy Sue Skipper is an Intuitive Hand Analyst, motivational speaker, workshop leader and author of three books: The Art of Conscious Evolution, Love Signs and Ancient History From Beyond the Veil.

## Summer Reading

### JOIN OUR SUMMER READING BOOK WORM CLUB

**When:** 1:15 - 2:45 pm  
July 13, 20 & 27

**Fee:** \$5 per month

**Circles:** 2nd - 7th Graders

**Volunteers:** Age 15 & up

**Where:** Meadows Place  
Community Center

**Instructors:** Zekia Campbell & Colita Campbell,  
713.385.6343



## Monday Movies

A movie is shown on several Mondays at the Community Center. An adult or responsible babysitter MUST accompany children NOT yet 5 years old. Movie titles are posted on the marquee by the front door of the Community Center. Popcorn and drinks will be served.

**When:** July 2, 9, 16, 23, 30 / Aug. 6, 13, 20

**Where:** Community Center

**Time:** 12:00 noon until the movie ends

**Fee:** \$1

## Fun Fitness Class

**Description:** Learn to have fun being fit! Learn kickboxing, yoga, dance & healthy snacking!

**Who:** School Age Kids

**Where:** Community Center

**Cost:** \$30 per session  
4 classes per session

**When:** Thursday afternoons 2:00 - 3:30 pm

**Session 2:** July 19, July 26,  
August 2, August 9



**Pre-Registration (One Week)** prior of classes or programs start dates is required to participate in all classes or programs. Forms can be picked up at City Hall M-F 9:00 a.m. - 4:00 p.m. or printed off the City website [www.cityofmeadowsplace.org](http://www.cityofmeadowsplace.org)

**Additional Info:** Wear your work out gear & athletic shoes.

**Instructor:** Anna Ferriera

## BINGO Bingo Bash Wednesday

Join the Parks & Recreation on Wednesday for BINGO. Prizes and fun for all that attend.

**When:** July 11, 18, 25 / Aug. 1, 8, 15, 22

**Where:** Community Center

**Time:** 11:00 a.m. - 12:30 p.m.

**Fee:** \$3 (ages 5 and up)

## Meadows Place Pool Wrist Bands

**P**urchase your City of Meadows Place pool wrist bands for \$10.00 per family pack of four (4). Additional wrist bands for your family or lost/replacement wrist bands may be purchased for \$5.00 each. Only residents of Meadows Place may purchase wrist bands; a driver's license or water bill must be shown. Wrist bands can be purchased at the pool during normal pool hours, ask for the Manager on Duty.

## Creative Craft Class

**Description:** Creative Crafting

**Who:** School Age Kids

**Where:** Community Center

**Cost:** \$30 per session - 4 classes per session

**When:** Tuesday afternoons 2 - 3:30 pm

**Session 2:** July 17, 24, 31, August 7

**Pre-Registration (One Week)** prior of classes or programs start dates is required to participate in all classes or programs. Forms can be picked up at City Hall M-F 9:00 a.m. - 4:00 p.m. or printed off the City website [www.cityofmeadowsplace.org](http://www.cityofmeadowsplace.org)

**Additional Info:** Supplies provided, just bring your creativity.

**Instructor:** Anna Ferriera

## Beginning Gymnastics

**Description:** Beginning Gymnastics

**Who:** Toddlers 18 months - 4 years old  
Children 5 - 12 years old

**Where:** Community Center

**When:** Toddlers: Tuesdays & Thursdays 8:30 - 9:30 am  
Children: Tuesdays & Thursdays 10:00 - 11:00 am

**Session 2:** July 10 - August 1

**Cost:** \$75 per session, 4 weeks per session (2 classes per week)  
\$40 per session, 4 weeks per session (1 class per week)

**Pre-Registration (One Week)** prior of classes or programs start dates is required to participate in all classes or programs. Forms can be picked up at City Hall M-F 9:00 a.m. - 4:00 p.m. or printed off the City website [www.cityofmeadowsplace.org](http://www.cityofmeadowsplace.org)

**Additional Info:** Wear shorts & a t-shirt you can move in.

**Instructor:** Coach Chester Smithart is a wonderful instructor who has tons of experience teaching gymnastics as well as working with children. Chester has over 15 years of gymnastics experience as a competitive athlete and 9 years of experience as a coach. He is currently coaching the Women's Junior Olympic Level 3 girls team and Junior Olympic men's team at Sugarland Gymnastics. His students have ranged in age from 18 months all the way to adults. Coach Chester truly loves what he does and is thrilled to have the opportunity to share his passion with his students.



### Kid Fish Derby

5 - 12 year olds

August 18th

Meadows Place Lake

8:30 - 11 am



Limited to the First 100 Pre-registered Kids  
Register at the Lake the Morning of the Derby

Casting Class & Derby, 8:30 - 10:00 am  
Awards, 10:30 am

Equipment Provided

Sponsored by:





## Pool Hours

Tuesday - Saturday 11:00 a.m. - 8:00 p.m.

Sunday 1:00 p.m. - 8:00 p.m.

Monday - Closed except for Holidays

Holidays - 12:00 p.m. - 7:00 p.m.

July 4	Parade 10:00 am. Pool open 1:00-7:00 pm
July 12	Pool Closed - Swim Team Prelims
July 15	Pool Closes at 7:00 pm
July 20	Bare Foot N' Friday 8:30 pm
August 17	Last Bare Foot N' Friday 8:30 pm
August 24	Last Weekday Pool's Open
August 25 - Sept 2	Pool Open Weekends Only Regular Hours
September 3	Holiday Hours, Last Day Pool Open

## Swim Lessons

**What:** Swim lessons

**Where:** Meadows Place Community Pool

**Who:** Classes are for ages 5 and up. Students will be grouped according to age.

**Time:** 5:15-6:00 OR 6:15-7:00 (45 minute classes)  
Tuesday-Friday (8 classes)

**When:** Session 2: July 17 - July 27  
Session 3: July 31 - August 10  
\*Sessions last 2 weeks.

**Cost:** \$50 per student/session

There will be a maximum of 5 students per class. **Registration is required.** Forms can be picked up at the pool. Payment is required at time of registration. Checks can be made payable to City of Meadows Place.

## Adult Lap Swim

**Additional Times!**

**Who:** Adults ages 16 and up

**What:** Swim laps in the pool before or after regular pool hours

**When:** Tuesdays and Thursdays 7:00 - 8:00 a.m. AND  
Tuesdays and Thursday 8:00 - 9:00 p.m.  
Ends August 16

**Where:** City of Meadows Place Community Lap Pool

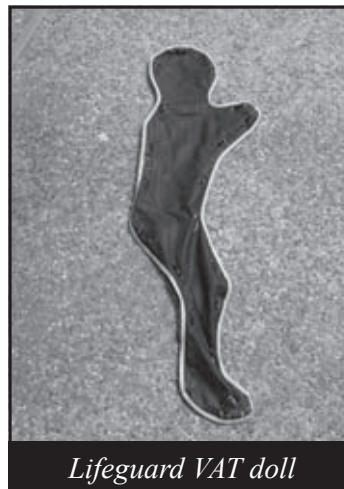
## Message from the Pool Manager

By Kristina Hickle

Meadows Place lifeguards are the best around and we train hard to ensure we are ready in the event of an aquatic emergency. As part of our ongoing training, myself and the Assistant Managers conduct V.A.T. (Vigilance Awareness Training) tests weekly on all of the lifeguards. We do this by placing a "shadow doll" in the water and timing the lifeguard on how long it takes for them to spot the doll, blow their whistle, jump in the water and save the doll. To the lifeguard, the doll looks like an unconscious victim on the bottom of the pool. If it

looks like the lifeguards are jumping off the stand for nothing, they are probably performing a VAT test! If you see the VAT doll in the water, leave it alone and watch the guard perform a simulated rescue!

*I hope everyone is enjoying their summer so far!*



Lifeguard VAT doll

## Water Aerobics

This is a sixty minute cardiovascular workout in the pool, which utilizes water resistance to improve cardiovascular fitness, muscular endurance, and flexibility. As the participant, you determine your own intensity level by deciding how hard to manipulate the water.

**When:** Tuesdays and Thursdays

**Session 2:** July 3 - July 26

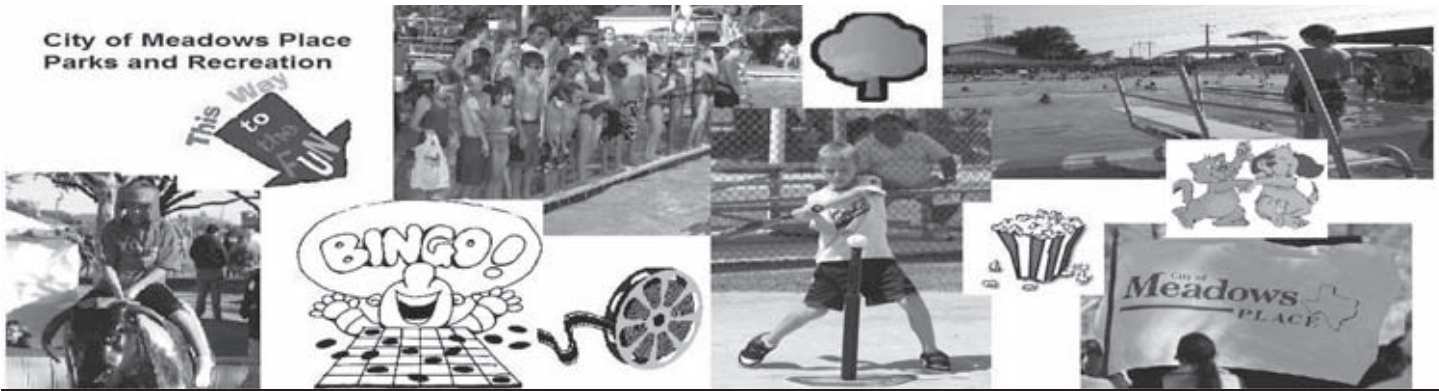
**Where:** Meadows Place Lap Pool

**Time:** 7:00 p.m. - 8:00 p.m.

**Fee:** \$60 for 4 week session, 2 classes per week

**Instructor:** Heidi Case

**Registration is required.** Pick up a form from City Hall Monday-Friday 9:00 a.m. - 4:00 p.m. or at [www.cityofmeadowsplace.org](http://www.cityofmeadowsplace.org).



Pre-registration is required and most classes have a minimum/maximum enrollment. PLEASE REGISTER EARLY!!!

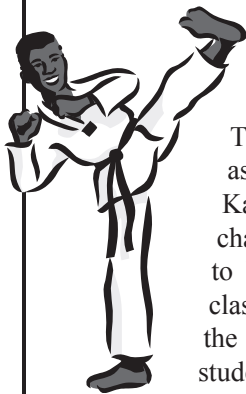
Call Parks and Recreation for information @ 281-983-2935 or

email us: [monya@cityofmeadowsplace.org](mailto:monya@cityofmeadowsplace.org) or [parcs3@cityofmeadowsplace.org](mailto:parcs3@cityofmeadowsplace.org)

Unless otherwise noted, Meadows Place Community Center/Pool will be the location for all activities.

You can download registration form from the website: [www.cityofmeadowsplace.org](http://www.cityofmeadowsplace.org)

## Classes



### AMERICAN SOCIETY OF KARATE (A.S.K.)

The American Society of Karate is an association designed to teach American Karate to ages 5-70 in a positive ever-changing system. Its goal is not necessarily to be the largest, but to be the best. This class has been on going for 19 years at the Community Center and welcomes new students.

#### New Sessions starting in September!

**Starts:** Ongoing

**Ends:** Thursday, August. 23rd, 2012  
(No class July 5th or 12th)

**Cost:** \$45--10 Week Session  
\$30--Uniform (sorry no checks, CASH ONLY)  
All Students MUST Register and pay Class Fee by Third Week

**Time:** 6:30pm - 7:30pm Junior Class (Ages 5-12)  
7:30pm - 8:30pm Adult Classes (Ages 13 and up)

**Where:** Community Center

**Instructors:** Steve Puma, Meadows Place resident (3rd Degree Black Belt), Michael Puma (2nd Degree Black Belt)

New students will be accepted the first 3 weeks. You may try the first class **Free** to make sure you wish to sign up.  
Children must be 5 years of age.

**PRE-REGISTRATION ONE WEEK** prior to class or program start dates is required to participate in all classes or programs. Forms can be picked up at City Hall M-F 9:00 a.m.-4:00 p.m. or printed off the City website [www.cityofmeadowsplace.org](http://www.cityofmeadowsplace.org)

### TENNIS ANYONE?!

**Description:** Beginning Youth Tennis Lessons

**Who:** Youth 8 - 14 years old

**Where:** Tennis Courts

**When:** Wednesdays 7:00pm & Saturdays 8:00 am  
Session 2: July 11 - August 4

**Cost:** \$75 per session, 4 weeks per session (2 classes per week)  
\$40 per session, 4 weeks per session (1 class per week)

**Pre-Registration (One Week)** prior of classes or programs start dates is required to participate in all classes or programs. Forms can be picked up at City Hall M-F 9:00 a.m.-4:00 p.m. or printed off the City website [www.cityofmeadowsplace.org](http://www.cityofmeadowsplace.org)

**Instructor:** Miriam Zein, 2012 UIL State Singles Champion from Dulles High School.



### MEADOWS PLACE TENNIS COURT ACCESS SYSTEM

Purchase your City of Meadows Place Tennis Court access cards for \$50.00 per card (maximum 2 cards per family). Only residents of Meadows Place may purchase a card; a driver's license or water bill must be shown to purchase the access card. Cards can be purchased at City Hall, Monday through Friday, 9:00 am. - 4:00 pm. Cards are valid through May 2013.

# PARKS & RECREATION

## PARKS AND RECREATION

### BULLETIN BOARD

4<sup>th</sup> of July Parade

Kid Fish Derby

- July 3** Patriotic Yard Decorations
- July 4** 4th of July Parade, City Hall, 10:00 am
- July 4** Joy of Generosity Drive  
Donate during the Parade, 10:00 am
- July 20** Barefoot-N-Friday, Pool 8:30 - 11:00 pm
- July 27** Ladies Night, Community Center, 7:30 pm
- August 17** Barefoot-N-Friday, Pool 8:30 - 11:00 pm
- August 18** Kid Fish Derby  
Meadows Place Lake 8:30 - 11:00 am

#### Weekly Classes and Activities:

(All are at the Community Center, Pool or Tennis Courts)

**Monday Movie Madness:** Mondays @ 12:00 noon

**Adult Lap Swim:** Tuesdays & Thursdays  
@ 7:00 am & 8:00 pm

**Gymnastics:** Tuesdays & Thursdays  
@ 8:30 & 10:00 am

**Tennis Lessons:** Wednesdays @ 7:00 pm  
Saturdays @ 8:00 am

**Water Aerobics:** Tuesdays & Thursdays @ 7:00 pm

**Wednesday BINGO!:** Wednesdays @ 11:00 am

**Taekwondo:** Tuesdays & Wednesdays  
@ 5:00 & 6:00 pm

**Swimming Lessons:** Tuesday - Friday  
@ 5:15 & 6:15 pm

**Karate:** Thursdays @ 6:30 pm

**Creative Crafting:** Tuesdays @ 2:00 pm

**Fun Fitness:** Thursdays @ 2:00 pm

**Bookworm Club:** Fridays @ 1:15 pm

**Contact Parks Department about Registration!**  
**281-983-2935**



## Class or Program Title

If interested in starting a class or program at our Community Center or outdoor facilities in Meadows Place, follow the format below and send to Meadows Place Parks and Recreation Department, One Troyan Drive, Meadows Place, Texas 77477 or email, parks3@cityofmeadowsplace.org.

Must have class and or program information in writing for approval by 1st Friday of the month in order to meet newsletter deadline 2nd Friday of the month.

**Description:** (Briefly describe your class or activity)

**Who:** (Age of students to participate)

**Where:** (The location of where the participants meet every week)

**When:** (Include dates and times of your program)

**Cost:** (How much you plan on charging for your session)

**Additional Info:** (Include any type of specifics that pertain to your class, such as certain attire, supplies needed, etc.)

**Instructor:** (Your name, as well as the names of any additional helpers/assistants, along with a short biography of you and contact phone number optional)



## Taekwondo

Early bird sign up, get a free uniform! (First 10 only)  
Come earn a belt!

SHARPEN YOUR MIND, STRENGTHEN YOUR BODY

**New Sessions Starting in September!**

**Where:** City of Meadows Place Community Center  
11975 Dorrance Lane.

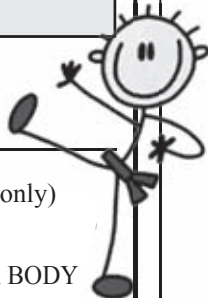
**Time:** Tues. & Wed.: 5:00 - 6:00pm for children 5-12 years old  
Tues. & Wed.: 6:00 - 7:00pm Adult class (13-up)

**When:** June 12 - August 22, 2012 (No classes July 3rd or 4th)

**Fee:** 10 classes for \$49 (one class per week)  
20 classes for \$98 (two classes per week)

**Instructor:** Jenny Pless (City of Meadows Place resident, teaching at the community center since 2006)

**PRE-REGISTRATION ONE WEEK prior to class or program start dates is required to participate in all classes or programs. Forms can be picked up at City Hall M-F 9:00 a.m.-4:00 p.m. or printed off the City website [www.cityofmeadowsplace.org](http://www.cityofmeadowsplace.org)**



## *Classified & Advertising*

Anyone wishing to place an ad in the newsletter can contact City Hall for information. All ads are due by the second Friday of each month. The appearance of paid advertising is not an endorsement by the City.

- William Sutherland Handyman Repairs. Appliance, Electrical, Plumbing, Clean out sewer line from 2"-8" pipe. Power washing, interior/exterior, Carpentry work, Painting, Concrete, Tiles. Cell 713-384-2817 / 281-568-0308

- Onyx Landscape. Residential and commercial. Total lawn care. Fertilization, flowerbeds and mulch. Seasonal flowers, sod, tree trimming, tree removal, wood fence installation and repair. Meadows Place resident. Free estimates. Manuel 281-865-6636.

- Pool Cleaning. Full service. Includes cleaning, chemicals, inspecting equipment, emptying baskets. CPO Certified. 281-865-6636 Manuel.

- Mary Kay Cosmetics. Call for re-orders or for a complementary summer sun kissed look 281-933-8298 - Carol

- Private Swim Lessons: All ages welcome, from the young to the young at heart! Learn how to swim from a former swim coach and sixteen - year Competitive Swimmer. \$15/ half an hour or \$25/hour. 832-457-2778

- Home Daycare now enrolling. Meals and snacks included. In business since 1994. 281-495-7996

- Pet Sitting/Dog Walker: Need someone to help with the daily chores of pet ownership while you navigate this crazy thing we call life? Need someone to walk your dog on a daily basis or while you're on vacation? If you have a furry, scaly, or feathered family member who needs some exercise, TLC, or training please call 832-457-2778. Experienced animal care professional.

- Registered child care in my Meadows Place home. Experienced, Reliable. Excellent References. Call Nancy 281-530-6740

- Call Haley to take care of your pets while you are on vacation. References - 281-561-5574

- Babysitting ages 3-10. I am an 18 year old high school graduate and a Meadows Place resident. Call Haley at 281-561-5574

- Sprinklers, new installations, repairs and maintenance. Service all sprinkler systems. Affordable. Licensed/insured. Free estimates. 281-865-6636 #20062

## *Home & Garden Club*

By Beverly Martin, Publicity

### **July 4th Parade ... "Garden Club Picnic Celebration."**

**A**s always Meadows Place has a great Fourth of July Parade.

What better way to get together with your neighbors. The Home and Garden Club always has a lot of fun decorating and participating in the parade.

Our meetings start again in September. Annual dues are \$25.00 per person and \$35.00 for a family.

Great job for the beautiful yards in our city!

#### ***Yard of the Month:***

##### ***Section I***

Beverly and Larry Martin  
11502 Brighton Lane

##### ***Section II***

Karyn Brannon  
11846 Meadow Crest Dr.

##### ***Section III***

Patsy Jones  
12110 Meadow Hollow Dr.

##### ***Section IVN***

Mr. and Mrs. Pablo Donatti  
12239 Monticeto

##### ***Section IVS***

Eleanor and Velon Saint  
12307 Level Run

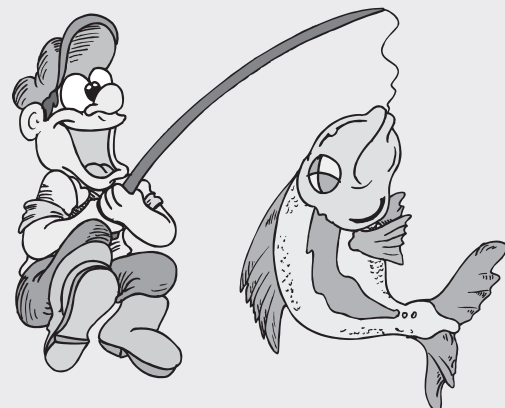
##### ***Section V***

Suresh, Nalani, Nikita  
and Nisha Sangani  
12214 Meadows Park

## *Fishing at the Lake!*

**F**ishing at the lake is GREAT! Catch and release fishing is permitted. Check out the Kid Fish Derby (see ad page 8) on August 18th and learn how to Fish! Anglers ages 17 and up must have a current fishing license, discounts are offered to those ages 65+. Grab your pole & bait and head to the lake!

Please do not release any outside fish into the lake or critters into the park.



# 2011 Annual Drinking Water Quality Report

Consumer Confidence Report (CCR)

PWS ID Number: TX0790025

PWS Name: CITY OF MEADOWS PLACE

The source of drinking water used by  
CITY OF MEADOWS PLACE is Ground Water

## Special Notice

### Required Language for ALL Community Public Water Systems

### Information on Sources of Water:

Annual Water Quality Report for the  
period of January 1 to December 31, 2011

Immuno-compromised persons such as persons with cancer undergoing chemotherapy, persons who have undergone organ transplants, people with HIV/AIDS or other immune system disorders, some elderly and infants can be particularly at risk from infections. These people should seek advice about drinking water from their health care providers. EPA/CDC guidelines on appropriate means to lessen the risk of infection by Cryptosporidium and other microbial contaminants are available from the Safe Drinking Water Hotline (800-426-4791).

If present, elevated levels of lead can cause serious health problems, especially for pregnant women and young children. Lead in drinking water is primarily from materials and components associated with service lines and home plumbing. We cannot control the variety of materials used in plumbing components. When your water has been sitting for several hours, you can minimize the potential for lead exposure by flushing your tap for 30 seconds to 2 minutes before using water for drinking or cooking. If you are concerned about lead in your water, you may wish to have your water tested. Information on lead in drinking water, testing methods, and steps you can take to minimize exposure is available from the Safe Drinking Water Hotline or at <http://www.epa.gov/safewater/lead>.

For more information regarding this report contact:

Name DAW McGRAW  
Phone 281-983-2950

Este informe contiene información muy importante sobre el agua que usted bebe. Tradúzcalo ó hable con alguien que lo entienda bien.

The sources of drinking water (both tap water and bottled water) include rivers, lakes, streams, ponds, reservoirs, springs, and wells. As water travels over the surface of the land or through the ground, it dissolves naturally-occurring minerals and, in some cases, radioactive material, and can pick up substances resulting from the presence of Contaminants that may be present in source

- Microbial contaminants, such as viruses and bacteria, which may come from sewage treatment plants, septic systems, agricultural livestock operations, and
- Inorganic contaminants, such as salts and metals, which can be naturally-occurring or result from urban storm water runoff, industrial or domestic wastewater discharges, oil and gas production, mining, or farming.
- Pesticides and herbicides, which may come from a variety of sources such as agriculture, urban storm water runoff, and
- Organic chemical contaminants, including synthetic and volatile organic chemicals, which are by-products of industrial processes and petroleum production, and can also come from gas stations, urban storm water runoff, and septic systems.
- Radioactive contaminants, which can be naturally-occurring or be the result of oil and gas production and mining activities.

### Information about Secondary Contaminants

Many constituents (such as calcium, sodium, or iron) which are often found in drinking water, can cause taste, color, and odor problems. The taste and odor constituents are called secondary constituents and are regulated by the State of Texas, not the EPA. These constituents are not causes for health concern. Therefore, secondaries are not required to be reported in this document but they may greatly affect the appearance and taste of your water.

## Information about Source Water Assessments

A Source Water Susceptibility Assessment for your drinking water source(s) is currently being updated by the Texas Commission on Environmental Quality. This information describes the susceptibility and types of constituents that may come into contact with your drinking water source based on human activities and natural conditions. The information contained in the assessment allows us to focus source water protection strategies.

For more information about your sources of water, please refer to the Source Water Assessment Viewer available at the following URL:  
<http://gis3.tceq.state.tx.us/swav/Controller/index.jsp?wtrsrc=>

Further details about sources and sourcewater assessments are available in Drinking Water Watch at the following URL:  
<http://dww.tceq.texas.gov/DWW/>

### Water Quality Test Results

**Maximum Contaminant Level Goal or Maximum Contaminant Level or MCL:** The level of a contaminant in drinking water below which there is no known or expected risk to health. MCLs allow for a margin of safety. The highest level of a contaminant that is allowed in drinking water. MCLs are set as close to the MCLs as feasible using the best available treatment technology.

**Maximum residual disinfectant level goal or MRDLG:** The level of a drinking water disinfectant below which there is no known or expected risk to health. MRDLGs do not reflect the benefits of the use of disinfectants to control microbial contaminants. The highest level of a disinfectant allowed in drinking water. There is convincing evidence that addition of a disinfectant is necessary for control of microbial contaminants.

**Maximum residual disinfectant level:** Regulatory compliance with some MCLs are based on running annual average of monthly samples.

**Avg:** milligrams per liter or parts per million - or one ounce in 7,350 gallons of water.

**ppm:** milligrams per liter or parts per billion - or one ounce in 7,350,000 gallons of water.

**ppb:** micrograms per liter or parts per billion - or one ounce in 7,350,000 gallons of water.

**na:** not applicable.

**Definitions:** The following tables contain scientific terms and measures, some of which may require explanation.

## 2011 Regulated Contaminants Detected

### Coliform Bacteria

Maximum Contaminant Level Goal	Total Coliform Contaminant Level	Highest No. of Positive	Fecal Coliform or E. Coli Maximum Contaminant Level	Total No. of Positive E. Coli or Fecal Coliform Samples	Violation	Likely Source of Contamination
0	1 positive monthly sample.	There were no TCR detections for this system in this CCR period		0	N	Naturally present in the environment.

### Lead and Copper

#### Definitions:

**Action Level Goal (ALG):** The level of a contaminant in drinking water below which there is no known or expected risk to health. ALGs allow for a margin of safety.

**Action Level:** The concentration of a contaminant which, if exceeded, triggers treatment or other requirements which a water system must follow.

Lead and Copper	Date Sampled	MCLG	Action Level (AL)	90th Percentile	# Sites Over AL	Units	Violation	Likely Source of Contamination
Copper	08/06/2010	1.3	1.3	0.191	0	ppm	N	Erosion of natural deposits; Leaching from wood preservatives; Corrosion of household plumbing systems.
Lead	08/06/2010	0	15	1.93	0	ppb	N	Corrosion of household plumbing systems; Erosion of natural deposits.

**Regulated Contaminants**

Disinfectants and Disinfection By-Products	Collection Date	Highest Level Detected	Range of Levels Detected	MCLG	MCL	Units	Violation	Likely Source of Contamination
Halocetic Acids (HAA5)*	06/11/2010	Levels lower than detect level	0 - 0	No goal for the total	60	ppb	N	By-product of drinking water chlorination.

Not all sample results may have been used for calculating the Highest Level Detected because some results may be part of an evaluation to determine where compliance sampling should occur in the future

Total Trihalomethanes (THM)*	06/11/2010	Levels lower than detect level	0 - 0	No goal for the total	80	ppb	N	By-product of drinking water chlorination.
------------------------------	------------	--------------------------------	-------	-----------------------	----	-----	---	--

Not all sample results may have been used for calculating the Highest Level Detected because some results may be part of an evaluation to determine where compliance sampling should occur in the future

Inorganic Contaminants	Collection Date	Highest Level Detected	Range of Levels Detected	MCLG	MCL	Units	Violation	Likely Source of Contamination
Antimony	02/20/2008	Levels lower than detect level	0 - 0	6	6	ppb	N	Discharge from petroleum refineries; fire retardants; ceramics; electronics; solder; test addition.
Arsenic	02/20/2008	4.4	3.2 - 4.4	0	10	ppb	N	Erosion of natural deposits; Runoff from orchards; Runoff from glass and electronics production wastes.
Barium	02/20/2008	0.217	0.192 - 0.217	2	2	ppm	N	Discharge of drilling wastes; Discharge from metal refineries; Erosion of natural deposits.
Beryllium	02/20/2008	Levels lower than detect level	0 - 0	4	4	ppb	N	Discharge from metal refineries and coal-burning factories; Discharge from electrical, aerospace, and defense
Cadmium	02/20/2008	Levels lower than detect level	0 - 0	5	5	ppb	N	Corrosion of galvanized pipes; Erosion of natural deposits; Discharge from metal refineries; runoff from waste batteries
Chromium	02/20/2008	Levels lower than detect level	0 - 0	100	100	ppb	N	Discharge from steel and pulp mills; Erosion of natural deposits.
Fluoride	2010	0.26	0.17 - 0.26	4	4.0	ppm	N	Erosion of natural deposits; Water additive which promotes strong teeth; Discharge from fertilizer and aluminum

Mercury	02/20/2008	Levels lower than detect level	0 - 0	2	2	ppb	N	Erosion of natural deposits; Discharge from refineries and factories; Runoff from landfills; Runoff from cropland.
Nitrate [measured as Nitrogen]	2010	0.32	0.18 - 0.32	10	10	ppm	N	Runoff from fertilizer use; Leaching from septic tanks, sewage; Erosion of natural deposits.

Nitrate Advisory - Nitrate in drinking water at levels above 10 ppm is a health risk for infants of less than six months of age. High nitrate levels in drinking water can cause blue baby syndrome. Nitrate levels may rise quickly for short periods of time because of rainfall or agricultural activity. If you are caring for an infant you should ask advice from your health care provider.

Nitrite [measured as Nitrogen]	04/04/2006	Levels lower than detect level	0 - 0	1	1	ppm	N	Runoff from fertilizer use; Leaching from septic tanks, sewage; Erosion of natural deposits.
Selenium	02/20/2008	12.1	4.9 - 12.1	50	50	ppb	N	Discharge from petroleum and metal refineries; Erosion of natural deposits; Discharge from mines.
Thallium	02/20/2008	Levels lower than detect level	0 - 0	0.5	2	ppb	N	Discharge from electronics, glass, and leaching from ore-processing sites; drug factories.
Radioactive Contaminants	Collection Date	Highest Level Detected	Range of Levels Detected	MCLG	MCL	Units	Violation	Likely Source of Contamination
Beta/Photon emitters	2010	7.2	7.2 - 7.2	0	4	mrem/yr	N	Decay of natural and man-made deposits.
Combined Radium 226/228	2010	1.9	1.9 - 1.9	0	5	pCi/L	N	Erosion of natural deposits.
Gross alpha excluding radon and uranium	2010	9.4	9.4 - 9.4	0	15	pCi/L	N	Erosion of natural deposits.
Synthetic organic contaminants including pesticides	Collection Date	Highest Level Detected	Range of Levels Detected	MCLG	MCL	Units	Violation	Likely Source of Contamination
2,4,5-TP (Silvex)	2010	Levels lower than detect level	0 - 0	50	50	ppb	N	Residue of banned herbicide.
2,4-D	2010	Levels lower than detect level	0 - 0	70	70	ppb	N	Runoff from herbicide used on row crops.



Alachlor	2010	Levels lower than detect level	0 - 0	0	2	ppb	N	Runoff from herbicide used on row crops.
Atrazine	2010	Levels lower than detect level	0 - 0	3	3	ppb	N	Runoff from herbicide used on row crops.
Benzo(a)pyrene	2010	Levels lower than detect level	0 - 0	0	200	ppt	N	Leaching from linings of water storage tanks and distribution lines.
Carbofuran	2010	Levels lower than detect level	0 - 0	40	40	ppb	N	Leaching of soil fumigant used on rice and alfalfa.
Chlordane	2010	Levels lower than detect level	0 - 0	0	2	ppb	N	Residue of banned termiticide.
Dalapon	2010	Levels lower than detect level	0 - 0	200	200	ppb	N	Runoff from herbicide used on rights of way.
Di (2-ethylhexyl) adipate	2010	Levels lower than detect level	0 - 0	400	400	ppb	N	Discharge from chemical factories.
Di (2-ethylhexyl) phthalate	2010	Levels lower than detect level	0 - 0	0	6	ppb	N	Discharge from rubber and chemical factories.
Dibromochloropropane (DBCP)	2010	Levels lower than detect level	0 - 0	0	0	ppt	N	Runoff/leaching from soil fumigant used on soybeans, cotton, pineapples, and orchards.
Dinoseb	2010	Levels lower than detect level	0 - 0	7	7	ppb	N	Runoff from herbicide used on soybeans and vegetables.
Endrin	2010	Levels lower than detect level	0 - 0	2	2	ppb	N	Residue of banned insecticide.
Ethylene dibroside	2010	Levels lower than detect level	0 - 0	0	50	ppt	N	Discharge from petroleum refineries.
Heptachlor	2010	Levels lower than detect level	0 - 0	0	400	ppt	N	Residue of banned termiticide.
Heptachlor epoxide	2010	Levels lower than detect level	0 - 0	0	200	ppt	N	Breakdown of heptachlor.

Hexachlorobenzene	2010	Levels lower than detect level	0 - 0	0	1	ppb	N	Discharge from metal refineries and agricultural chemical factories.
Hexachlorocyclopentadiene	2010	Levels lower than detect level	0 - 0	50	50	ppb	N	Discharge from chemical factories.
Lindane	2010	Levels lower than detect level	0 - 0	200	200	ppc	N	Runoff/leaching from insecticide used on cattle, lumber, gardens.
Methoxychlor	2010	Levels lower than detect level	0 - 0	40	40	ppb	N	Runoff/leaching from insecticide used on fruits, vegetables, alfalfa, livestock.
Oxamyl [Vydate]	2010	Levels lower than detect level	0 - 0	200	200	ppb	N	Runoff/leaching from insecticide used on apples, potatoes and tomatoes.
Pentachlorophenol	2010	Levels lower than detect level	0 - 0	0	1	ppb	N	Discharge from wood preserving factories.
Picloram	2010	Levels lower than detect level	0 - 0	500	500	ppb	N	Herbicide runoff.
Simazine	2010	Levels lower than detect level	0 - 0	4	4	ppb	N	Herbicide runoff.
Toxaphene	2010	Levels lower than detect level	0 - 0	0	3	ppb	N	Runoff/leaching from insecticide used on cotton and cattle.
Volatile Organic Compounds	Collection Date	Highest Level Detected	Range of Levels Detected	MCLG	MCL	Units	Violation	Likely Source of Contamination
1,1,1-Trichloroethane	2010	Levels lower than detect level	0 - 0	200	200	ppb	N	Discharge from metal degreasing sites and other factories.
1,1,2-Trichloroethane	2010	Levels lower than detect level	0 - 0	3	5	ppb	N	Discharge from industrial chemical factories.
1,1-Dichloroethylene	2010	Levels lower than detect level	0 - 0	7	7	ppb	N	Discharge from industrial chemical factories.
1,2,4-Trichlorobenzene	2010	Levels lower than detect level	0 - 0	70	70	ppb	N	Discharge from textile-finishng factories.

1,2-Dichloroethane	2010	Levels lower than detect level	0 - 0	0	5	ppb	N	Discharge from industrial chemical factories.
1,2-Dichloropropane	2010	Levels lower than detect level	0 - 0	0	5	ppb	N	Discharge from industrial chemical factories.
Benzene	2010	Levels lower than detect level	0 - 0	0	5	ppb	N	Discharge from factories; Leaching from gas storage tanks and landfills.
Carbon Tetrachloride	2010	Levels lower than detect level	0 - 0	0	5	ppb	N	Discharge from chemical plants and other industrial activities.
Chlorobenzene	2010	Levels lower than detect level	0 - 0	100	100	ppb	N	Discharge from chemical and agricultural chemical factories.
Dichloromethane	2010	Levels lower than detect level	0 - 0	0	5	ppb	N	Discharge from pharmaceutical and chemical factories.
Ethylbenzene	2010	Levels lower than detect level	0 - 0	700	700	ppb	N	Discharge from petroleum refineries.
Styrene	2010	Levels lower than detect level	0 - 0	100	100	ppb	N	Discharge from rubber and plastic factories; Leaching from landfills.
Tetrachloroethylene	2010	Levels lower than detect level	0 - 0	0	5	ppb	N	Discharge from factories and dry cleaners.
Toluene	2010	Levels lower than detect level	0 - 0	1	1	ppm	N	Discharge from petroleum factories.
Trichloroethylene	2010	Levels lower than detect level	0 - 0	0	5	ppb	N	Discharge from metal degreasing sites and other factories.
Vinyl Chloride	2010	Levels lower than detect level	0 - 0	0	2	ppb	N	Leaching from PVC piping; Discharge from plastics factories.
Xylenes	2010	Levels lower than detect level	0 - 0	10	10	ppm	N	Discharge from petroleum factories; Discharge from chemical factories.
cis-1,2-Dichloroethylene	2010	Levels lower than detect level	0 - 0	70	70	ppb	N	Discharge from industrial chemical factories.

o-Dichlorobenzene	2010	Levels lower than detect level	0 - 0	600	600	ppb	N	Discharge from industrial chemical factories.
p-Dichlorobenzene	2010	Levels lower than detect level	0 - 0	75	75	ppb	N	Discharge from industrial chemical factories.
trans-1,2-Dichloroethylene	2010	Levels lower than detect level	0 - 0	100	100	ppb	N	Discharge from industrial chemical factories.

# Growing Family?

Celebrate with a new car! Buying or selling, nobody does it like Texas Direct Auto. Fast. Easy. Fun. We Pay More. We Pay Today.

**Yes! It's True.  
Sell Us Your Car!**



 **TEXASDIRECTAUTO.COM**

**Bugs bugging you?  
Buzz us!**

**Mr. Mike**  
PEST CONTROL



**FREE Home Evaluations & Estimates**  
Not valid for WDI reports.

**\$100 OFF**  
Any Complete Termite Treatment  
With coupon.

**\$25 OFF**  
Ant & Flea Service  
With coupon.

**\$49<sup>00</sup>**  
Initial Roach Service  
With coupon.

**\$79<sup>00</sup>**  
House & Yard Spray  
With coupon.

*Offer Ends Soon - Call Today*

MEADOWS PLACE RESIDENT

Locally Owned and Operated...

- ✓ 20 Years of Experience
- ✓ Termites & General Pests
- ✓ Free Inspections
- ✓ WDI Inspections/Reports
- ✓ Insured

Direct: **281-610-1053**  
or **281-564-1163**



## Simpson's Tree Service



- Tree Trimming
- Tree Removal
- Senior Citizen Discount!
- FREE Estimates!

**\$50 OFF**  
All services over \$500  
**\$25 OFF**  
All services under \$500  
with coupon only

**Proudly Serving the Greater Houston Area for over 19 Years!**

Insured for your protection..  
[www.SimpsonsTreeService.com](http://www.SimpsonsTreeService.com)

**When Quality Counts...**

**Call 281.980.0095**

# G & D Remodel And Repair Homes

Carpentry, Siding, Fences  
Hardy Plank. Small projects  
No problems call us.  
Floors, Tile, Vinyl, Laminate,  
Ceramic, Hardwood.  
Painting Interior y Exterior.  
Pressure washer, Gutters,  
Plumbing, Roofing, etc.

Install  
Plasma TV, Mail box,  
Counter tops, Cabinets,  
Doors, Windows,  
Ceiling fans, light fixture.  
Garbage Disposal, stoves,  
Water heaters, Filters,  
Ice maker ,etc.



Excellent References Satisfaction guaranteed Free estimates  
call G&Dremodel@hotmail.com For your convenience you can pay whit credit card office  
(713) 269-9414 Over 14 years of experience (713) 771-2869

## LEVEL PRO HOME SERVICE INC. FOUNDATION REPAIR REMODEL & MORE !

FINANCING AVAILABLE & INSURANCE CLAIMS WELCOME!  
WINDOWS • SIDING • FLOORING • KITCHEN & BATH



SHOWROOM  
920 MURPHY RD.#C  
STAFFORD 77477



RANDY ROSE  
281 397-2299 / 888 461-4669  
cell 832 894-0781 fax 281 969-5190  
LEVELPROHOMESERVICE.COM

# James O. McDonald

Certified Public  
Accountant  
Serving Our Clients  
since 1973



Jim McDonald CPA

## Income Tax Planning & Preparation

- Estimating & Planning
- Individual
- Businesses
- Sales Tax
- Property Tax
- Texas Franchise Tax
- Estate Tax

## Accounting & Bookkeeping for Small & Medium Size Businesses

- Business and Personal Financial Statements.
- Monthly Bookkeeping.
- Assist in Selection of Accounting Software.
- Financial Analysis and Planning

*"We are committed to providing high quality accounting service at reasonable cost. Allow us to provide your accounting services!"*

*Jim McDonald*

7100 Regency Square Blvd • Suite 220  
Houston, TX 77036 • Phone: (713) 771-4628 • Fax: (713) 532-9316



## DISCOUNTS.

See me today and get the discounts  
and service you deserve.



**Diane R. Schomburg, Agent**

Phone: (281) 265-6100

Fax: (281) 265-2093

1716 Dulles Ave., Suite 102

Sugar Land, TX 77478

[www.dianeschomburg.com](http://www.dianeschomburg.com)

[diane@dianeschomburg.com](mailto:diane@dianeschomburg.com)

### Office Hours:

Mon.-Thurs. 9 am To 5:30 pm

Fri. 9 am-5 pm

Saturday & After Hours By Appointment

"Fort Bend Resident Since 1980"

LIKE A GOOD NEIGHBOR



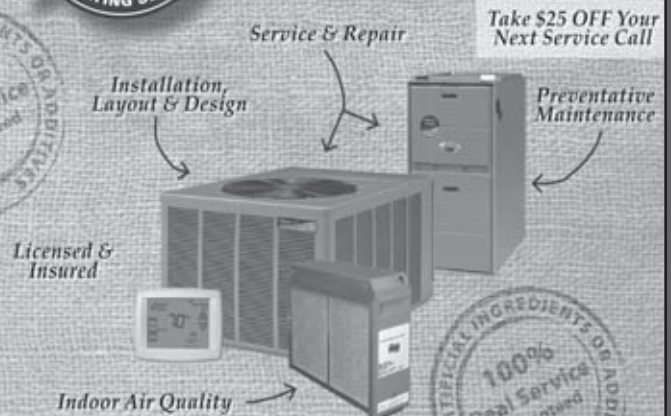
STATE FARM IS THERE.®

I'M THERE

[statefarm.com](http://statefarm.com)®



Real People.  
Real Solutions.  
Real Service.



Take \$25 OFF Your  
Next Service Call

're-al adj \rē(-)əl\  
a : not artificial, fraudulent, or illusory :  
genuine <real gold>; also : being precisely  
what the name implies <a real professional>  
so-lu-tion noun \sə-'lū(-)shən\  
a : an action or process of solving a problem  
b : an answer to a problem : explanation;  
specifically : a set of values of the variables  
that satisfies an equation  
'ser-vice noun \sər-'vī(-)s<  
: the act of serving; as  
a : a helpful act <did him a service>

Real  
Phone Number  
**(281) 208-2665**

13335 Murphy Road,  
Stafford, Texas 77477

Definitions. They describe, explain, and make clear who we are.

Regulated by The Texas Department of Licensing and Regulation, P.O. Box 12557, Austin, Texas 78711 (512) 465-6599

## A Week in Ireland

With Lou Ann Kelly & GoAhead Tours

Galway, Cork, & Dublin

July 6 – 13, 2013

Visit my web site

[louannkellyireland.grouptoursite.com](http://louannkellyireland.grouptoursite.com)

for pricing and to reserve your space



### SAVE THE DATE!

Saturday, October 20<sup>th</sup>

5K & 1 Mile Run/Walk  
**Meadows Place Park**

Sponsors and volunteers are welcome!

Hosted by

**Sugar Grove Christian School**

Preschool – Sixth Grade

11600 West Airport Blvd. Meadows Place

[www.sgcs.org](http://www.sgcs.org)

[schoolinfo@sgcs.org](mailto:schoolinfo@sgcs.org)

281-575-6598

# M&I CONSTRUCTION

*For All Your Concrete Solutions*

**No Job To Big or Small!  
Residential & Commercial**

Concrete Work

Driveways

Slabs

Sidewalks

Patios

*Larry Gonzalez*

**832-859-0127**

# RAY'S

A/C & Heating Services

Tel: 281-799-2556

Maintenance \* Service \* Installations

Honest & Fair Prices

Manufacturer's  
Suggested Annual  
Maintenance

Heat check-Up  
**\$69.00**

Anytime

**\$150 OFF**

Any Replacement  
Equipment  
*Excludes parts*

Not valid with any other discount or promotion.  
Offers may not be combined. One coupon  
per customer.

**\$50.00  
OFF**

Any repair over  
\$350

Manufacturer's  
Suggested Annual  
Maintenance

A/C Check-Up  
**\$69.00**

Anytime



Email: [raysmac7@aol.com](mailto:raysmac7@aol.com)

[www.RaysMac.com](http://www.RaysMac.com)



**Bare Foot N' Fridays**

Ages 9-14  
Sponsored by  
City of Meadows Place Parks & Recreation Department

MEADOWS PLACE POLICE OFFICERS WILL BE ON DUTY AT GATE!  
Parent volunteers are needed at the gate at 11:00 p.m. to assist pool staff and Police Officers  
in making sure that all the participants are picked up safely!

**2012 Summer Schedule**  
**Where:** Meadows Place Community Pool  
**When:** July 20, August 17  
Always the third Friday of the summer months!  
**Time:** 8:30- 11:00 p.m.  
**Fee:** \$5.00

Requirements to attend:  
Must be 9-14 years old  
Enjoy night swimming  
Come barefoot  
Enjoy music and fun  
You do not need to be a Meadows resident to attend!

Mark your calendar with these dates and be sure to tell your friends!  
Concessions sold by Scout Troop 301 for a nominal charge.

# @ The Grove

- **Vacation Bible School: June 10-13**  
6:30-8:30 PM  
*Classes and events for all ages!*
- **Sweet Pea Day Camp: July 30-August 2**

## Sunday Schedule:

- 1st Worship Assembly - 8:30 AM
- Bible Classes- 9:45 AM
- 2nd Worship Assembly- 11:00 AM

**For More Information  
Check Out:**  
[www.sugargrove.org](http://www.sugargrove.org)

*Sugar Grove is a dynamic and diverse independent Christian church  
that is a great place for you and your family to call home.*

Sugar Grove Church of Christ 11600 West Airport Blvd. Meadows Place

Now Enrolling

## Kidzz Zone Academy & Daycare

- ▶ STRUCTURE CURRICULUM FOR INFANTS - 12 YRS OLD
- ▶ PRIVATE PRE - KINDERGARTEN, CERTIFIED TEACHERS
- ▶ BEFORE AND AFTER SCHOOL PROGRAM
- ▶ TRANSPORTATION OFFERED TO AND FROM SCHOOL AND HOME
- ▶ NUTRITIOUS MEALS AND SNACKS
- ▶ SAFE & CLEAN ENVIRONMENT

NCA Worksource Accepted

12336 West Airport Blvd. • Ste D  
 City of Meadows Place • TX 77477  
 Tel: 281-776-9800 • Fax: 281-776-9801  
 Email: kidzzzone@gmail.com  
 www.kidzzzone.com



Academy & Daycare OPEN FROM 6:00 AM TO 6:30 PM

No Registration Fee  
One week free



## LEAVINGS CONCRETE CO.

- Patios
- Driveways
- Foundations
- Sidewalks
- Lifetime Warranty on Lattice Patio Covers
- Flagstone
- Concrete Pavers
- Stamped Concrete
- Breakout & Removal

Tel: 281-431-1004

Fax: 281-431-4277 Cell: 713-851-4337

drleavings@peoplepc.com

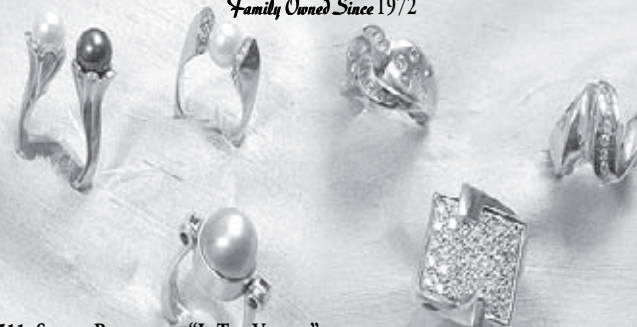
**FREE ESTIMATES!**



## THE GALAXIE JEWELERS

WE CREATE THE UNUSUAL

*Family Owned Since 1972*



2511 SUNSET BOULEVARD "IN THE VILLAGE"  
 (713) 521-2511 • FAX (713) 521-3700  
 www.TheGalaxieJewelers.com

## Complete Lawn Services

- Mow, Edge, Bag, Blow
- Front & Back
- Flower Bed,
- Garden Design
- Trimming
- Plantation
- Sprinkler Systems
- Tree Services
- Fences Installation
- No Contract Required

Offc: **281-568-5234**

Cell: **832-882-5597**

**Call Today !**



# ANITA MILNE

## BEARD REALTY GROUP PRESENTS MEADOWS PLACE HOMES ON THE MARKET



12006 DORRANCE



12211 MEADOW CREST CT.



12039 MULHOLAND



11314 SCOTTSDALE



11935 BRIGHTON



11544 S. KIRKWOOD



12319 HOGGARD



**SUMMER IS ON ITS WAY!!  
CALL ANITA MILNE FOR ALL YOUR  
REAL ESTATE NEEDS**



ANITA MILNE

ANITA MILNE  
281-413-9732 one number  
milneanita@yahoo.com



ANGELA SIMONE



One Troyan Drive • Meadows Place, TX 77477

Prsrt Std  
U.S. Postage  
**PAID**  
Stafford, TX  
Permit No. 36

**City of Meadows Place**

One Troyan Drive • Meadows Place, TX 77477  
(281) 983-2950 • Fax (281) 983-2940

- MAYOR..... **Charles Jessup** (281) 568-3461  
e-mail: mayor@cityofmeadowsplace.org
- ALDERMAN..... **Terry Henley** (281) 530-7136  
e-mail: alderman4@cityofmeadowsplace.org
- ALDERMAN..... **John Isbell** (281) 498-1984  
e-mail: alderman1@cityofmeadowsplace.org
- ALDERMAN..... **Terry W. Morgan, Sr.** (281) 686-4000  
e-mail: alderman2@cityofmeadowsplace.org
- ALDERMAN..... **Dave Wilkens** (281) 240-7887  
e-mail: alderman3@cityofmeadowsplace.org
- ALDERMAN..... **John Whiteman** (281) 530-0432  
e-mail: alderman5@cityofmeadowsplace.org
- CITY SECRETARY..... **Elaine Herff**

- \*\*\*\*\*
- EMERGENCY..... 9-1-1
  - CITY HALL ( 9:00 a.m. - 4:00 p.m.) Mon-Fri..... (281) 983-2950
  - POLICE DEPARTMENT / 24 Hours..... (281) 983-2900
  - FT. BEND COUNTY SHERIFF..... (281) 342-6116
  - WATER AND SEWER..... (832) 209-5049
  - FT. BEND COUNTY COURTHOUSE..... (281) 342-3411
  - ANIMAL CONTROL..... (281) 342-1512
  - PARKS AND RECREATION DEPARTMENT..... (281) 983-2935

**Community Center Rental**  
Building Capacity 165  
Tables and chairs to accommodate your party.

- Food / no alcohol..... \$150.00
- Food and alcohol..... \$250.00
- Non-residents add..... \$100.00
- Community Pool Rental..... \$300.00  
(Maximum time allowed is 3.5 hours)

**Community Center / Pool Combo**  
Available for rental May - September  
Rent both and receive a discount of \$50.00

**CALL PARKS AND RECREATION TO  
SCHEDULE YOUR EVENT**  
281-983-2935  
monya@cityofmeadowsplace.org  
parks3@cityofmeadowsplace.org

**Storm Water Hotline**

Report dumping in storm water drains.  
Only **RAIN WATER** is allowed  
281-983-2932 or report online, see website.  
For updates on Public Works News visit the website.  
publicworks@cityofmeadowsplace.org



**WCA Trash Collection**

Trash pick up is every Tuesday and Friday  
/ Recycling every Friday  
Please have trash at curb side by  
7:00am each pick up day. Any  
questions concerning trash pick up  
or recycling call  
WCA direct at 281-368-8397.



**Street Light Repair**

When calling or emailing about a street  
light outage, you will need to get the pole  
number, and if you add your email  
address Center Point can keep you  
apprised of the status  
of the repair request.

713-207-2222  
www.centerpointenergy.com