

Your Place for Life



JUNE 2008

COMMENTS FROM THE MAYOR By Charles Jessup



CITY ELECTIONS

Thank You to everyone who voted in last month's election. Besides being our civic duty, voting is important in many ways and reflects directly on the City. Folks at the County, the School Board as well as our State and National Representatives notice the number of votes tallied. Meadows Place is known as an involved community and the number of votes we cast reflects that involvement. It doesn't matter who you vote for – just VOTE! Now, Congratulations to Heidi Case, Dave Wilkens and Charles Kulhanek who were all successfully elected to serve two more years on City Council. Thanks to them for serving and you for voting.

GROUNDWATER REDUCTION PROGRAM

Well, we are about to officially be part of the Fort Bend Subsidence District's Groundwater Reduction Program. We are waiting on final details to be confirmed but starting next month, you will see a new charge on your water bill for Surface Water Conversion. Yes, it will be expensive and yes, we had to join. Like all cities, we have to comply with this program. We don't have the ability to build a lake big enough to provide us water and the Brazos River Water Authority is no longer selling water rights from the Brazos so we are somewhat limited in our options. After lengthy investigation, we felt partnering with WCID # 2 was the best available option. They are in the water business and have been buying surface water rights for years thus providing us with the ability to comply at the lowest cost to the City. It is going to cost each homeowner (approximately) \$1.82 per thousand gallons used. This means if you use 10,000 gallons, there will be a Conversion cost of \$18.20 added to our bills. Should we not join WCID # 2 our cost per 1,000 gallons would be \$3.50 per 1,000 gallons used. We will be getting some credit from WCID #2 for the water we pump but since we don't bill for all we pump, we will be closely monitoring our costs vs. expenses to see if/when we can apply some portion of these credits toward a Conversion reduction. There will be more information on the website and in future newsletters.

GARBAGE CONTRACT

As if that were not enough, the City's garbage contract is going to expire at the end of the month. We are going out to bid and will get the best price per house that we can, but remember, when we entered into the current contract diesel fuel was \$1.67 per gallon. There is a lot going on, some tough decisions to make but you have a good, strong Council, and they will do their best to look after us and keep Meadows Place – Your Place for Life.

www.cityofmeadowsplace.org

Attention!!!

CITY OF MEADOWS PLACE RESIDENTS Save This Newsletter!

WE NEED YOUR HELP!

With the help of Sandy Caldwell of Pamela Printing we are upgrading and freshening up our newsletter. With these 3 final choices, an internal city survey rendered a split decision, so we thought we would bring it to you. Starting in June and ending in August we will print the newsletter with a different look. In September you will vote for your favorite look! So please save your newsletters for June, July, and August and be ready to vote for your favorite look in September. More details to come!



1

2

3

CITY CALENDAR

We are looking for residents who have lived here continuously for the past 25 years. If you lived here when the city was incorporated, (November of 1983) please let us know. You can stop by City Hall, phone us (281) 983-2950, or email us at citysecretary@cityofmeadowsplace.org. We look forward to hearing from you!

- June 24** Regular City Council Meeting
City Hall 7:30 p.m.
- July 4** Independence Day
City Hall Closed
- July 4** Parade
Dorrance to City Park

Did You Know?

Did You Know... that we set a record at Barefoot'n Friday last month? We had one hundred and eighty kids there for the first event of the season. 180 - Wow! Parks Director Monya Keenan said she, the Life Guards and our PD were VERY, VERY busy but it was well worth it as the kids had a ball. Isn't that wonderful? Just one more example of Meadows Place being Your Place for Life!

Did You Know... that Meadows Place resident Mark Jessup won Best Supporting Actor at the Fort Bend Tommy Tunes award? Mark won it for his role as Rolph in The Sound of Music. Way to go Mark!

Did You Know... that many of the things that get put into action stem from ideas that YOU bring to our attention? One example is the new walking track addition that will be put into Phase 3 of the Parks addition. Another is the Parking Lot, which your neighbor Larry Ewing helped us with. The Lost & Found bulletin board, the City logo in the courtroom and our Wall of Honor are all based on input from you and your neighbors. If YOU have an idea that will enhance our loveable little City, please let us know. Thanks

Did You Know... that Public Works Director Dan McGraw has to monitor the City's energy use as part of the State Energy Conservation effort? It is one of the (MANY) areas we monitor and report on. One point of interest was that we can now confirm that we saved over 1700 kw hr per month since we converted to LED traffic lights. This saved us somewhere around \$2,000 per year which pays for the conversion in about two years. Good call Dan – and this is just one part of our energy reduction plan!

Did You Know... that the plans for our 25th Anniversary Celebration are in full swing? Lots of meetings, planning and energy on our behalf. Rumor has it that we are going to have fireworks. If you get a chance, say 'Thanks' to Alderman Heidi Case and our Parks Directors Monya Keenan and Terry Modeland and all the volunteers and sponsors for their contribution to this great event. Also, keep your eye out for an opportunity to get involved.

Did You Know... that Troop Leaders Carrie Gregg and Jennifer Townsell were quite proud of Savannah, Ellie, Madalyn, Brianna, Jasmine, Jessica and Samantha as Brownie Troop 19116 opened the April City Council Meeting by leading everyone in The Pledge of Allegiance? Ruthelen Robinson will tell you it was as cute as it was inspirational. Thank You, ladies.

Did You Know... that several people asked why we recently used asphalt to repair and patch our streets instead of concrete? Several items are in play here, but basically, it came down to money. With our help, in four days the county put down 4,420 linear foot of asphalt for just over \$15,000. Using concrete would have taken at least two months at a cost of some \$320,000. Since we may be doing major renovations on Kirkwood and Airport in the next few years, it just seemed foolish to spend that kind of money on those roads at this time. So, you see, we got about 50,880 sq. ft of asphalt repair for what 1,500 of concrete replacement would have cost us.

Did You Know... that Christopher Pham, owner of the new Meadows Place Square at Kirkwood and Airport, provided 32 live oaks at the Community Center as well as 3 sycamore and 2 more live oak trees at the Brighton lot? Christopher said he wanted to be a good corporate neighbor and contribute to our City that he is now a part of it. Thank You, Christopher! We hope both the trees and your center grow and prosper for years to come.

If you have a question, comment or news we can use – please drop a note by City Hall or E-mail us at: mayor@cityofmeadowsplace.org Thanks and hope to see you at a City Council meeting real soon.



Garage Sales Dates

Garage sales are limited to the last weekend of odd numbered months (January, March, May, etc.) Weekends are defined as Friday and Saturday. Residents may hold up to 2 garage sales per year on the designated weekends. A garage sale permit is required.

We will have a garage sale in October because the November garage sale dates fall on Thanksgiving weekend. The last garage sale date for each year will now be in October.

2008 Garage Sale Dates

July 25th & 26th

September 26th & 27th

October 24th & 25th



SAT Prep Course

- Who:** Meadows Place residents who attend Dulles high school
What: The first meeting participants will be assessed and the course will be then tailored towards their individual needs.
When: Tuesdays and Fridays
June 10- July 18
noon – 2pm
Where: Community Center
Instructors: all teach at St. John's School. They are Head of Upper School and Math teacher Kef Wilson (masters from Harvard), Physics teacher Doug Carr (masters from UH), Latin teacher Colin Elk (masters from Oxford and has taught the Kaplan SAT Program,) and history teacher, Dr. Rich Doina (Meadows Place Resident).
Cost: \$200 The funds collected from this project will then be donated to the academic fund of Meadows Elementary School.
Maximum of 15 participants.

Splash Night News

Splash Night will be held on June 13, 2008. The traditional citywide celebration marks the opening of the pool and summer activities held in Meadows Place. Join your neighbors at the pool and enjoy an evening of fun, fellowship, games, swimming, music and great FOOD.

Meet Your Council

RICK STAIGLE, ALDERMAN, POSITION V



Rick and his wife Heather have been married for thirteen years, 10 of those years have been as Meadows Place residents. The Staigle's have two children; Brandon, a 4th grader at Meadows Elementary, and Jacob, who is in the autism program at Barrington Place Elementary.

Rick has previously served on the City's Planning & Zoning Commission from 2001 to 2004 and has served on City Council since 2004. Rick is also active with Cub Scout Pack 301 as a Den Leader.

Rick has both Bachelors and Masters degrees in Civil Engineering from the University of Wyoming and is the President of Traffic Engineers, Inc, a local engineering firm started in 1969. Rick also serves on various committees for the Institute of Transportation Engineers, Fort Bend Chamber of Commerce and the Greater Houston Partnership. Rick participated in the Fort Bend Chamber of Commerce 2006 Leadership Forum. The Leadership Forum educates area leaders on various aspects of governmental activities and private industry in Fort Bend County. Rick also assists the Public Works department with his knowledge of engineering and traffic issues.

City Ordinances / Code Enforcement

By Tracey Spiller



Well, I can't believe we are already into the month of June! In the last month, I have noticed an increase in the amount of loose dogs around the City. The City of Meadows Place does have a leash law and requires dogs to be on a leash or confined to a yard. The City of Meadows Place contracts with Animal Control Services of Fort Bend County (1) because of the lack of manpower to provide service, and (2) because of the cost to maintain the proper facilities.

One more thing concerning the codes, you are not allowed to post any type of signage on traffic control signs, stop signs, street signs or light poles. The City of Meadows Place has a notification board on Dorrance at the overflow parking lot. Please post all notices for lost dogs or items for sale at that location.

You folks are really working hard out there to make improvements to your homes! The Oxley family added some new landscaping and has put on a fresh coat of paint. The Stoghill family is in the process of building a new garage, driveway and replacing sidewalk. The Staigle family is also rebuilding their garage and replacing their driveway. I am hearing talk on the street about remodels in the Stansbury home as well as in the Isbell home so I will keep you posted. Hopefully, I will be able to provide pictures with their updates!



ATTENTION
25TH ANNIVERSARY T-SHIRT ON SALE,
COME GET YOURS NOW...FOR ONLY \$10.00.
MONDAY-FRIDAY 9AM-4PM@CITY HALL



By: Officer Kelly Davis

r.a.d.KIDS

The Meadows Place Police Department is implementing the r.a.d.Kids Program. Officers receive specialized training that enables them to teach children how to protect themselves.

Through r.a.d.KIDS training, children become empowered and learn to replace fear, confusion, and panic in dangerous situations with confidence, personal safety skills, and self-esteem designed to enhance the ability of children and parents to utilize knowledge, skills, and power to protect themselves from violence and harm.

r.a.d.KIDS, the national leader in children's safety, has been brought to children and parents by the training and development of nationally certified instructors drawn from their own communities. Endorsed by the Elizabeth Smart, Polly Klaas, and Jessica Lundsford Foundations, r.a.d.KIDS has become the premier safety-education program among young people today. The Girl Scouts of America have created a merit badge for Brownies completing this training.

The program is open to boys and girls kindergarten through 6th grade (ages 5 to 12) and covers virtually all aspects of child safety awareness. This 10-hour program will keep the child active in learning about safety and conflict avoidance. At the conclusion of this training, each child will be able to demonstrate their learned abilities in simulated confrontations to include a simulated call to 911 to report their emergency.

r.a.d.KIDS Curriculum topics include:

- Home, School, Gun, Vehicle, and Bicycle Safety
- Bullying and "Out and About" Safety
- Realistic Defense Against Abduction
- Good-Bad-Uncomfortable Touch and more
- Stranger Tricks
(including Physical Defense Against Abduction)
- Self-realization of personal power

Be sure and look for more information in our upcoming issues of our City of Meadows Place newsletters. If you would like more information on r.a.d.KIDS, you can go to the website at www.radkids.org or www.meadowspacetx.gov

By Beverly Martin, Publicity

Newly elected Meadows Home and Garden Club Board Members were welcomed at the club's annual "In and Out Dinner," on May 6th. Margaret Sandlin will serve a fourth term as President of the Garden Club. 1st Vice President/ Programs - Kay Ewing, 2nd Vice President/ Yearbook - Elizabeth Waite, Ways and Means Committee - Zella Little, Lillian Abbott, and Benet Gaytos, Membership - Betty Landers and Pat Byers, Secretary - Laura Nabors, Treasurer - Zella Little, Publicity - Beverly Martin, Scholarship - Betty Schofield and Benet Gaytos, Civic Development - Ruthelen Robinson and Pat Byers, Telephone - Fran Bissett and Priscilla Schaeffer.

Tuesday, May 13th the Garden Club enjoyed a "Fiesta Banquet," for the officers' installation dinner at the Community Center. The new Board Members look forward to another exciting and successful year.

Club meetings resume on the 2nd Tuesday of September in the Community Center at 7:30 pm. We would love for you to join us in our community service, social activities and friendship.

Scholarship Winner will be announced in the next newsletter.

Yard of the Month winners were judged the last weekend of April. Our city looks great. There are so many nice yards that making a final decision was difficult. Take time to drive around the neighborhood and look at the Yard of the Month Winners for May.

SECTION 1

Linda and Herb McCright
11407 Scottsdale

SECTION 2

Sandra and Ken Reese
11910 Brook Meadow

SECTION 3

Ernie and Valentine Devera
12131 Scottsdale

SECTION 4 N

The Ronald Kuenning's
12318 Alston Dr.

SECTION 4 S

Harry and Carol Hamilton
12310 Level Run

MEADOW GLEN

Minh Nguyen and Thuy Le
12207 Meadow Crest Court

**Gardening tip: Apply granular fertilizers to crepe myrtles and spray with insecticide soap to control white flies and sooty molds.

TWO CAR GARAGE

With Slab

FOR \$97 Month

NO Down Payment

We do ROOM ADDITIONS
And CONCRETE WORK too

WDL LUMBER

713-728-5830

800-773-0474

FREE estimates

Wdllumber.com

Your Design On your Lot

Interest & Length Depends on Credit

 *Classified & Advertising*

Anyone wishing to place an ad in the newsletter can contact City Hall for information. All ads are due by the second Friday of each month. The appearance of paid advertising is not an endorsement by the City.

Avon products shop online <http://www.youravon.com/>
lindalittlejohn order brochure or products by email
garylittlejohn@sbcglobal.net or 281-498-9855.

William Sutherland Handyman Repairs. Appliance, Electrical, Plumbing, Clean out sewer line from 2"-8" pipe. Power washing, interior /exterior, Carpentry work, Painting, Concrete, Tiles.
Cell 713-384-2817 / 281-568-0308

Registered home daycare enrolling, Meals and snacks. Registered since 1994. Call 281-495-7996 -Melanie.

Sugar Creek Baptist Church is looking for childcare workers 18 and older for Sunday mornings. \$6.50 hourly. Contact Cheryl at 281-274-7403

Mary Kay beauty skin care and glamour products.
Complimentary makeovers. 29 years experience. Meadows Place resident. Carol Evans 281-933-8298

Private Swim Lessons: \$20.00 per hour
Infants to Adults - Experienced and Trained Professional Call
832-457-2778



**CITY OF MEADOWS PLACE
JULY 4TH PARADE 2008**

Parade Entry Form

On Friday, July 4th at 10:00 a.m., the annual 4th of July Parade will be held. We hope that you will consider being an entry in the parade. The following is a fact sheet and entry form for the parade. If you have any questions, please contact the Parks and Recreation Department at 281-983-2935 between the hours of 9:00 and 4:00.

1. Your entry may be a car, truck, flat bed trailer, or anything that could be decorated in a patriotic theme for the parade.
2. If you wish to go all out and build a float, the Parks and Recreation Department can give you the names of vendors who sell float supplies. If having a professional float built to your specification is more your style, there are a number of places that will build you a float and then rent it to you for the occasion. They also have floats already built that you can rent for one day.
3. First place BLOCK entry will receive funds to help pay for a block party on the date of your choice.
4. First place awards will be presented for Best Youth, Commercial, and Spirit entries.
5. Entries will be judged on patriotism, and community spirit. Size is not important.
6. The parade begins at 10:00 a.m. sharp and will proceed on Dorrance to Mulholland to Brighton and end at the playing fields.
7. The staging area for the parade will be in the parking lot on Dorrance near the Southwest Freeway. You will need to be set up and ready to go at 9:45 a.m.
8. *Pre-registration is mandatory for prizes.* There is no charge for participation in the parade. Entry deadline is Tuesday July 1. Return the entry form to the Parks and Recreation Department, One Troyan Drive, Meadows Place, Texas 77477; or fax to 281-249-0050
9. Contestants in the Non-motorized parade need NO pre-registration.
10. If the parade is cancelled for inclement weather, **there will not be a rain out date.**

NO THROWING OF ANY OBJECTS FROM VEHICLES WILL BE ALLOWED DURING THE PARADE. THIS INCLUDES GUM, CANDY, PENCILS, ETC. *Thank you for your cooperation.*

CONTACT PERSON _____

ADDRESS _____

PHONE: Home _____ Office _____ Cell _____

****(Please provide a number that we may be able to contact you if there was an emergency such as inclement weather)****

Email _____

CATEGORY (circle one) Block Float Youth Spirit Commercial

ORGANIZATION _____

DESCRIPTION OF ENTRY: (Float, Marchers, Truck etc.) _____

NUMBER OF VEHICLES IN YOUR GROUP _____ TYPE OF VEHICLE(S) _____

← IMPORTANT → PLEASE NOTE THESE WILL BE THE ONLY VEHICLES ALLOWED IN THE STAGING AREA.
Parking will be available adjacent to the staging area. No "dropping off" in staging area. *Please cooperate!*

Are you an invited dignitary who requires a vehicle to be provided? Yes ___ No ___

If so, do you have your own sign? Yes ___ No ___



POOL Theme Parties 2008

Date of Party: _____ **Time of Party** _____ (2 hr block)

Please Circle the Requested Theme: each theme includes decorations, plates, cups, ice, forks, cake, and balloons. Party favors are also included in all themes **excluding the general theme.** Two adults for every eight children. Additional guest \$5.00

- **General Theme-**\$5
- **Pirate-** \$6
- **Princess-** \$6
- **Tropical-** \$6
- **Sport-**\$6
- **Hannah Montana-** \$6
- **Tinkerbelle-** \$6
- **Hot Wheels-** \$6
- **Cars-** \$6
- **Superman-** \$6
- **Spiderman-** \$6
- **Clown-** \$6

Pizza can be added to any party for \$10 per large pizza.

of birthday party children _____ additional guests _____

Name of Birthday Person _____
 Parents Names _____
 Home Phone _____ Cell Phone _____
 Email _____
 Address _____

Age on Birthday _____ T-Shirt Size _____

To add pizza: \$10 each (one topping) Indicate # next to each flavor of pizza requested 1 pizza=12 slices

Cheese _____
 Sausage _____
 Pepperoni _____
 Other _____
 Hamburger _____

Serve Cake at What Time: _____

Cake Flavor (circle one-all have white icing) _____ chocolate _____ vanilla _____

Add ons for an additional cost (circle all that apply)

*ice cream .50ea *piñata \$25 *moonwalk \$90 *clown \$75 * DJ \$150

Total Cost \$ _____ check or cash _____ Date Paid _____

Reservationists Initials _____
 Staff member will contact you to confirm reservation details



Get into the

Spring of things

WITH A HOME EQUITY LINE OF CREDIT
from **STERLING BANK.**

VARIABLE RATE AS LOW AS

4.49%
APR

Prime Minus .51% for Qualifying Lines.¹

No Fee to Apply. Interest May Be Tax Deductible.²

Rate available for 6 Months.

Spring into action today and apply by
calling **713-507-2444**

❖ ***Sterling Bank*** ❖

World class banking. Deep Texas roots.[®]



WWW.BANKSTERLING.COM

MEMBER FDIC

Subject to credit and property approval. Program terms and conditions are subject to change at any time without notice. Other restrictions and limitations apply. Property insurance is required; collateral in special flood hazard areas requires flood insurance.

¹ The Home Equity Line of Credit has a variable rate feature. The ANNUAL PERCENTAGE RATE is based on the value of an index. The index ("Index") is *The Wall Street Journal* Prime Rate which, as of 04/30/08, is 5.00% which results in a rate of 4.49% APR for line amounts of \$50,000 up to \$500,000. The discount rate is limited to the first six (6) months during the draw period. After the discount rate expires the rate will be a variable rate of *The Wall Street Journal* Prime Rate minus .25% which, as of 04/30/08, is 5.00% which results in a rate of 4.75% APR. However, your ANNUAL PERCENTAGE RATE will not at any time exceed 18%. The advertised rate includes a .25% rate discount which requires auto debit from a new or existing Sterling Bank personal checking account, is good only on new home equity lines, and cannot be combined with any other offer. Ask about our collateral and loan-to-value ratio requirements to be eligible for these rates. Stated rate applies to lines secured by owner-occupied, single family dwellings. Purchase money lines are excluded from this offer. Applications must be received by June 30, 2008. Title policy required for lines over \$250,000.

² Consult a tax advisor regarding the deductibility of interest.



Pre-registration is required and most classes have a minimum/maximum enrollment. PLEASE REGISTER EARLY!!!

Call Parks and Recreation for information @ 281-983-2935 or

email us: monya@cityofmeadowsplace.org or terry@cityofmeadowsplace.org

Unless otherwise noted, Meadows Place Community Center /Pool or Annex Building will be the location for all activities.

You can download registration form from the website: www.cityofmeadowsplace.org

Classes

Tennis Classes

Please contact the Parks Department @ 281-983-2935 if you are interested in joining Tennis Classes.

Fort Bend Tennis Services provides a Tennis Pro for each class for instruction. All classes are held at City of Meadows Place Tennis Courts. You do not have to be a resident to enroll in these classes.

All class registration must go through Meadows Parks and Recreation Department.

Additional classes may be added if there are enough requests.

Summer Schedule Begins June 8, 2008

Weekday Mornings-Tuesday/Thursday

Session I: June 10 - July 3

Youth Beginner & Advanced Beginner
9:00-9:55am \$75/session

Weekday Evenings - Monday/Wednesday

Session I - June 9 - July 2

Session II: July 7 - July 30

Youth Intermediate 5:00 - 5:55pm \$75/session

Youth Beginner & Advanced Beginner
6:00 - 6:55pm \$75/session

Sundays

Session I: June 8 - June 29

Session II: July 13 - August 3

Youth Beginner & Advanced Beginner
5:30 - 6:55pm \$60/ session

Class size: Youth 5 - 8 / Instructor (ages: 7 - 18)
Adults 4 - 6/ Instructor

Location: City Tennis Courts

****Schedule may be extended if it rains****

ATTENTION TENNIS PLAYERS

Please take a moment to read the tennis rules sign located at the tennis court. All rules will be enforced and violators will be subject to forfeiture of their privileges for use of City facilities. The access card reader installed at the entrance gate will read every card and allow or deny access. The memory in the card reader gives the Parks and Recreation Office the information as to what resident's card was swiped at any given time of the day. It has been observed on a regular basis that too many guests or even nonresident use may be going on. Upon observation of such occurrence and notification to the Parks Department, we will research access information. This information will enable the Parks Office to contact the card holder to discuss possible violation of the access card rules.

If you see suspicious use of the tennis courts, or anyone violating the rules, please take note of the time of day and the possible violation and contact the Parks Department. You can call and leave a detailed message 24 hrs a day. Your personal name and information is optional. We will investigate the situation and contact you, if you wish, as well as the prospective violator.

Thank You,

City of Meadows Place Parks and Recreation Directors
281-983-2935



2007 Annual Drinking Water Quality Report

(Consumer Confidence Report)

CITY OF MEADOWS PLACE

Phone Number:

Special Notice for the ELDERLY, INFANTS, CANCER PATIENTS, people with HIV/AIDS or other immune problems:

Some people may be more vulnerable to contaminants in drinking water than the general population. Immuno-compromised persons such as persons with cancer undergoing chemotherapy, persons who have undergone organ transplants, people with HIV/AIDS or other immune system disorders, some elderly, and infants can be particularly at risk from infections. These people should seek advice about drinking water from their health care providers. The EPA/Centers for Disease Control and Prevention (CDC) guidelines on appropriate means to lessen the risk of infection by *Cryptosporidium* and other microbial contaminants are available from the Safe Drinking Water Hotline (1-800-426-4791).

Public Participation Opportunities

Date: July 2nd - July 31st

Time: 9:00am - 2:00 p.m.

Phone Number 281.983.2950

To learn about future public meetings (concerning your drinking water), or to request to schedule one, please call us.

Our Drinking Water Meets or Exceeds All Federal (EPA) Drinking Water Requirements

This report is a summary of the quality of the water we provide our customers. The analysis was made by using the data from the most recent U.S. Environmental Protection Agency (EPA) required tests and is presented in the attached pages. We hope this information helps you become more knowledgeable about what's in your drinking water.

WATER SOURCES: The sources of drinking water (both tap water and bottled water) include rivers, lakes, streams, ponds, reservoirs, springs, and wells. As water travels over the surface of the land or through the ground, it dissolves naturally-occurring minerals, and in some cases, radioactive material, and can pick up substances resulting from the presence of animals or from human activity. Contaminants that may be present in source water before treatment include: microbes, inorganic contaminants, pesticides, herbicides, radioactive contaminants, and organic chemical contaminants.

En Español

Este informe incluye información importante sobre el agua potable. Si tiene preguntas o comentarios sobre este informe en español, favor de llamar al tel. (281) 983-2950 - para hablar con una persona bilingüe en español.

Where do we get our drinking water?

Our drinking water is obtained from GROUND water sources. It comes from the following Lake/River/Reservoir/Aquifer: CHICOT AQUIFER. A Source Water Susceptibility Assessment for your drinking water source(s) is currently being updated by the Texas Commission on Environmental Quality and will be provided to us this year. The report will describe the susceptibility and types of constituents that may come into contact with your drinking water source based on human activities and natural conditions. The information contained in the assessment will allow us to focus our source water protection strategies. For more information on source water assessments and protection efforts at our system, please contact us.

ALL drinking water may contain contaminants.

When drinking water meets federal standards there may not be any health based benefits to purchasing bottled water or point of use devices. Drinking water, including bottled water, may reasonably be expected to contain at least small amounts of some contaminants. The presence of contaminants does not necessarily indicate that water poses a health risk. More information about contaminants and potential health effects can be obtained by calling the EPA's Safe Drinking Water Hotline (1-800-426-4791).

Secondary Constituents

Many constituents (such as calcium, sodium, or iron) which are often found in drinking water, can cause taste, color, and odor problems. The taste and odor constituents are called secondary constituents and are regulated by the State of Texas, not the EPA. These constituents are not causes for health concern. Therefore, secondaries are not required to be reported in this document but they may greatly affect the appearance and taste of your water.

About The Following Pages

The pages that follow list all of the federally regulated or monitored contaminants which have been found in your drinking water. The U.S. EPA requires water systems to test for up to 97 contaminants.

DEFINITIONS

Maximum Contaminant Level (MCL)

The highest permissible level of a contaminant in drinking water. MCLs are set as close to the MCLGs as feasible using the best available treatment technology.

Maximum Contaminant Level Goal (MCLG)

The level of a contaminant in drinking water below which there is no known or expected health risk. MCLGs allow for a margin of safety.

Maximum Residual Disinfectant Level (MRDL)

The highest level of disinfectant allowed in drinking water. There is convincing evidence that addition of a disinfectant is necessary for control of microbial contaminants.

Maximum Residual Disinfectant Level Goal (MRDLG)

The level of a drinking water disinfectant below which there is no known or expected risk to health. MRDLGs do not reflect the benefits of the use of disinfectants to control microbial contamination.

Treatment Technique (TT)

A required process intended to reduce the level of a contaminant in drinking water.

Action Level (AL)

The concentration of a contaminant which, if exceeded, triggers treatment or other requirements which a water system must follow.

ABBREVIATIONS

- NTU - Nephelometric Turbidity Units
- MFL - million fibers per liter (a measure of asbestos)
- pCi/L - picocuries per liter (a measure of radioactivity)
- ppm - parts per million, or milligrams per liter (mg/L)
- ppb - parts per billion, or micrograms per liter (µg/L)
- ppt - parts per trillion, or nanograms per liter
- ppq - parts per quadrillion, or picograms per liter

Inorganic Contaminants

Year or Range	Contaminant	Average Level	Minimum Level	Maximum Level	MCL	MCL G	Unit of Measure	Source of Contaminant
2005	Arsenic <i>* The arsenic value was effective January 23, 2006. In the event of a violation, you will be notified.</i>	4	4	4	10	0	ppb	Erosion of natural deposits, runoff from orchards, runoff from glass and electronics production wastes.
2005	Barium	0.209	0.209	0.209	2	2	ppm	Discharge of grilling wastes, discharge from metal refineries, erosion of natural deposits.
2005	Fluoride	0.2	0.2	0.2	4	4	ppm	Erosion of natural deposits, water additive which promotes strong teeth, discharge from fertilizer and aluminum factories.
2007-2009	Nitrate	0.21	0.19	0.24	10	10	ppm	Runoff from fertilizer use, leaching from septic tanks, sewage, erosion of natural deposits.
2005	Selenium	9.2	4.2	9.2	50	50	ppb	Discharge from petroleum and metal refineries, erosion of natural deposits, discharge from mines.
2005	Combined Radionuclides 226 & 228	0.93	0.4	1.3	5	0	pCi/L	Erosion of natural deposits.
2005	Gross beta emitters	3.17	0	5.7	50	0	pCi/L	Decay of natural and man-made deposits.
2005	Gross Alpha	9.87	5.7	12.7	15	0	pCi/L	Erosion of natural deposits.

Organic Contaminants: TESTING WAIVED, NOT REPORTED, OR NONE DETECTED

Maximum Residual Disinfectant Level

Systems must complete and submit disinfection data on the Disinfection Level Quarterly Operating Report (DLQOR). On the DLQOR report, the system must provide disinfectant type, minimum, maximum and average levels.

Year	Disinfectant	Average Level	Minimum Level	Maximum Level	MRL	MRL G	Unit of Measure	Source of Chemical
2007	Disinfectant (SO ₂)	Average level of 0.07 ppm's quarterly	Minimum level: single reading	Maximum level: single reading	4.0	<4.0	ppm	Disinfectant used to control microbes.

Disinfection By products: NOT REPORTED OR NONE DETECTED

Unregulated Initial Distribution System Evaluation for Disinfection By products: WAIVED OR NOT YET SAMPLED

Unregulated Contaminants: NOT REPORTED OR NONE DETECTED

Lead and Copper

Year	Contaminant	The 90th Percentile	Number of Sites Exceeding Action Level	Action Level	Unit of Measure	Source of Contaminant
2007	Lead	2.2	0	15	ppb	Corrosion of household plumbing systems; erosion of natural deposits.
2007	Copper	0.18	0	1.5	ppm	Corrosion of household plumbing systems; erosion of natural deposits; leaching from wood preservatives.

Recommended Additional Health Information for Lead

All water systems are required by EPA to report the language below starting with the 2009 CCR to be delivered to you by July of 2010. We are providing this information now as a courtesy.

"If present, elevated levels of lead can cause serious health problems, especially for pregnant women and young children. Lead in drinking water is primarily from materials and components associated with service lines and home plumbing. This water supply is responsible for providing high quality drinking water, but cannot control the variety of materials used in plumbing components. When your water has been sitting for several hours, you can minimize the potential for lead exposure by flushing your tap for 30 seconds to 2 minutes before using water for drinking or cooking. If you are concerned about lead in your water, you may wish to have your water tested. Information on lead in drinking water, testing methods, and steps you can take to minimize exposure is available from the Safe Drinking Water Hotline or at <http://www.epa.gov/safewater/lead>."

Turbidity NOT REQUIRED

Total Coliform REPORTED MONTHLY TESTS FOUND NO COLIFORM BACTERIA.

Fecal Coliform REPORTED MONTHLY TESTS FOUND NO FECAL COLIFORM BACTERIA.

Secondary and Other Constituents Not Regulated

(No associated adverse health effects)

Year or Range	Constituent	Average Level	Minimum Level	Maximum Level	Secondary Limit	Unit of Measure	Source of Constituent
2005	Bicarbonate	254	254	254	NA	ppm	Corrosion of carbonate rocks such as limestone.
2005	Calcium	60.1	60.1	60.1	NA	ppm	Abundant naturally occurring element.
2005	Chloride	54	54	54	300	ppm	Abundant naturally occurring element; used in water purification; byproduct of oil field activity.
2005	Iron	0.023	0.023	0.023	3	ppm	Erosion of natural deposits; iron or steel water delivery equipment or facilities.
2005	Magnesium	11.5	11.5	11.5	NA	ppm	Abundant naturally occurring element.
2005	Silica	0.001	0.001	0.001	NA	ppm	Erosion of natural deposits.
2005	pH	7.4	7.4	7.4	6.5-8.5	units	Measure of corrosivity of water.
2005	Sediment	36	36	36	NA	ppm	Erosion of natural deposits; byproduct of oil field activity.
2005	Sulfate	10	10	10	500	ppm	Naturally occurring; erosion industrial byproduct; byproduct of oil field activity.
2005	Total Alkalinity as CaCO ₃	208	208	208	NA	ppm	Naturally occurring soluble mineral salts.
2005	Total Dissolved Solids	307	307	307	1000	ppm	Total dissolved mineral constituents in water.
2005	Total Hardness as CaCO ₃	197	197	197	NA	ppm	Naturally occurring calcium.
2005	Zinc	0.076	0.076	0.076	5	ppm	Moderately abundant naturally occurring element used in the metal industry.

PARKS & RECREATION



AMERICAN SOCIETY OF KARATE (A.S.K.)

The American Society of Karate is an association designed to teach American Karate to ages 5-70 in a positive ever-changing system. Its goal is not necessarily to be the largest, but to be the best. This class has been on going for 16 years at the Community Center and welcomes new students.

2008 Summer Karate Schedule

Starts: Thursday, June 12
Ends: Thursday, August 28
 NO CLASS JULY 17
Fee: \$40 - 11 weeks
 \$30 - Uniform (sorry no checks)
 purchase from instructor
Time: 6:30pm - 7:30pm Ages 5-12
 7:30pm - 8:30pm Teens/Adults
Where: Community Center
Instructors: Rex Mahy (3rd Degree Black Belt)
 and Steve Puma, Meadows Place resident (2nd Degree Black Belt)

New students will be accepted the 1st 3 weeks.
 You may try the 1st class free before you sign up.
 Children must be 5 years of age.

MARTIAL ARTS, FUN FITNESS, GAMES

Special Summer program for Children

Instructor: Jenny Pless (Black belt 2nd Dan) City of Meadows Place Resident
 Place: City of Meadows Place Community Center
 11975 Dorrance

Class EVERY Wednesday

Time: 4:30 p.m. to 5:30p.m.

Date: June 11th – July 30th

Fee: 8 Classes for \$40.00



Please call Jenny Pless at 281-788-8564 or call City of Meadows Place parks & recreation 281-983-2935. You can also sign up during the class.

CONFIDENCE through KNOWLEDGE in the mind. HONESTY in the heart. STRENGTH in the body. Keep FRIENDSHIP with one another. Develop MIGHT FOR RIGHT. Build a strong & happy COMMUNITY.

Barefoot Fridays

PARKS AND RECREATION BULLETIN BOARD

Ladies Night Out

June 6th	Barefoot Friday	8:30pm
June 10th	Session 1 Water Aerobics	7:00-8:00pm
June 13th	Splash Night	6:00-9:00pm
June 16th	Monday Movie begins	12:00pm
June 17th	Lap Swim Begins	7:00-8:00am
June 18th	Wednesday Bingo begins	11:00am
June 19th	Lap Swim	7:00-8:00am
June 20th	Barefoot Friday	8:30pm
June 23rd	Monday Movie	12:00 pm
June 24th	Lap Swim	7:00-8:00am
June 25th	Wednesday Bingo	11:00am
June 26th	Lap Swim	7:00-8:00am
June 27th	Ladies Night Out	7:30pm
June 30th	Monday Movie	12:00 pm
July 4th	Parade	10:00am

Ladies Bowling League

Contact: Parks Department - 281.983.2935
 or terry@cityofmeadowsplace.org

Wednesday Morning League
 9:00am, Stafford Lanes



MONDAY MOVIES

A movie is shown on several Mondays at the Community Center. An adult or responsible babysitter MUST accompany children NOT yet 5 years old. Movie titles are posted on the marquee by the front door of the Community Center. Popcorn and drink will be served.

When: June 16, 23, 30
 July 7, 14, 21, 28
 August 4, 11

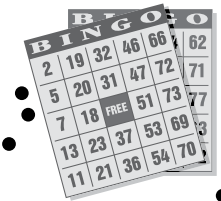
Where: Community Center
Time: 12:00 noon until movie ends
Fee: \$1.00

BINGO BASH (WEDNESDAY)

Join the Parks and Recreation on Wednesday for BINGO. Prizes and fun for all that attend.

When: June 18, 25
 July 2, 9, 16, 23, 30
 August 6, 13

Where: Community Center
Time: 11:00am to 12:30pm
Fee: \$3.00 (ages 5 and up)



PARKS & RECREATION

Swim Camp '08

We're Ready, Are You?

- Who:** All swimmers eligible for swim team
What: The camp will consist of physical and mental preparation, combined with stroke technique and will focus on giving swimmers the edge they need on the competition.
When: Saturdays, June 7, 14, 21, 28, July 5, 12
8am-10:30pm
Where: Meadows Place Community Pool and Track
Cost: \$100
Instructors: Brian Schroeder, Dustin Poe, Meghan Fleming, Tyler Smith and Matt Jones

SWIM LESSONS 2008

- Beginner Lessons:** age 5 and up. 1 instructor to 4 students. Lessons are 45 minutes long. 8 classes per session. \$50 per student.
Technique Lessons: for children that can already swim, ages 5 and up. Lessons are 45 minutes long. 8 classes per session. 1 instructor to 4 or 5 students. \$50 per student.

Session 1 (Beginner or Technique) begins June 17

- When:** Tuesday, Wednesday, Thursday, and Friday for 2 weeks
Time: 6PM

Session 2 (Beginner or Technique) begins July 1

- When:** Tuesday, Wednesday, Thursday, and Friday for 2 weeks (will reschedule July 4 if needed by most swimmers)
Time: 6PM

Session 3 (Beginner or Technique) begins July 15

- When:** Tuesday, Wednesday, Thursday, and Friday for 2 weeks
Time: 6PM

Session 4 (Beginner or Technique) begins July 29

- When:** Tuesday, Wednesday, Thursday, and Friday for 2 weeks
Time: 6PM

Private and Semi Private Lessons:

See coaches at the pool or call Glenna @ 281-498-5114.

WATER AEROBICS

A sixty minute cardiovascular workout in the pool, which also includes stretching, and muscle toning.

- When:** Tuesdays & Thursday
Where: Municipal Pool
Time: 7-8pm

Session 1 June 10-26 (6 classes)
Session 2 July 15 -31 No class July 17,
rescheduled for July 16 (6 classes)
Session 3 August 5-21 (6 classes)

Fee: \$35.00 (6 classes) per session
Minimum students 10

Instructor: Hollye Ferreria

LAP SWIM

- Who:** Adults ages 16 and up
What: Swim laps in the lap pool before regular pool hours
When: Tuesdays and Thursdays 7:00-8:00am
Begins June 17th- Ends August 21
Where: City of Meadows Place Community Pool

Pool Hours

Monday	Closed
Tuesday-Saturday	11:00am to 8:00pm
Sunday	1:00pm to 8:00pm
Holidays	12:00 noon to 7:00pm
June 7	Pool opens weekdays
June 13	Pool closed during the day
	OPEN at 6:00pm for Splash Night
July 4	Pool opens at noon
July 17	Pool Closed
August 23	Pool open regular hours weekends only
August 25	Fort Bend School Starts
September 1	Holiday hours, Last Day Pool Open

Quilting Classes

Quilting classes are held in the Meadows Place Community Center ANNEX building located on S. Kirkwood the 2nd Saturday of each month. Different machine stitch patterns will be taught and will range in skill level from beginner to advance. If you have some sewing experience and can sew a straight seam, you can make a beautiful quilt. Please contact Brenda Meadows for details @ 281-498-3484.



- When:** 2nd Saturday of the month
Where: Community Center Annex building @ 11803 S. Kirkwood
Time: 9am - 4pm
Fee: \$30.00 and up, depending on project
Max: 10 students

Quilting Club

Several Meadows Place residents are experienced quilters and want to share their love of quilting with others. This group is meeting at the Community Center ANNEX building located on S. Kirkwood on the 3rd Saturday of each month. Contact Margaret Minton 281-933-2927 or 281-948-8823 to join the group.

PARKS & RECREATION

THEME PARTIES

CELEBRATE AT THE MEADOWS PLACE POOL

- Birthday parties
- End of the year parties
- Team parties
- Youth graduation parties
- Celebration Parties
- Teen Parties

*"Party Add Ons"
Clowns, Moonwalk, Bal-
loons, Ice Cream, Custom
Themes*

*D. J.
Available*

Parties can be scheduled:
Tues - Saturday, 11am - 6pm
Sundays, 1 - 6pm
2 hour limit in all parties

All parties are scheduled and staffed through
the Parks Department.

Check out the coolest 2008 birthday plans
281-983-2935

MEADOWS PLACE PARADE

July 4th, 2008

The annual 4th of July Parade will be held on Friday, July 4th at 10:00 a.m. The traditional parade will assemble at the parking lot across from the old Garden Ridge location on Dorrance. The parade will travel down Dorrance to Mulholland turn left on Mulholland and left on Brighton to the city park where refreshments will be available for purchase.

Meadows Place groups will be present at the field house selling concessions before, during and after the parade. Proceeds will benefit each of these groups.

An expense paid block party will be awarded to the best all around block float entry in the parade. Get your family and neighbors together and create your entry. Size is not important. Originality, simplicity, creativity and community spirit is what the judges favor. The judges table for this portion of the parade contest will be staged at the Community Center, so give it your very best and wave as you go by. Awards will be presented at the Field House on Brighton at the conclusion of the parade.

First place awards will be given this year to the Best Youth (individual or group), Best Commercial entries, and Spirit entries. These awards will be presented at the conclusion of the parade at the Field House.

The Non-Motorized portion of the parade will be judged at the beginning of the parade route where we assemble. Judging will take place at 9:30 a.m. SHARP. Awards will be presented to each age category. Non-Motorized entries do not need to fill out an entry form. Just show up for the 9:30 a.m. judging. **JUDGES ARE STILL NEEDED FOR THE NON-MOTORIZED PORTION OF THE PARADE. CALL THE PARKS DEPARTMENT AT 281-983-2935 (24 HOUR NUMBER.)**

Visit the city website at www.cityofmeadowsplace.org and you can download an entry form for the parade. Drop it off at City Hall as soon as possible for the parade lineup to get organized and run smoothly. Gather your family and friends and host a parade party in your yard. Get your family and neighbors and make a float to enjoy the parade fun. Help out and join in as a judge. Contact the Parks Department and volunteer to help the best hometown parade around.

DON'T MISS OUT ON THE MEADOWS PLACE ANNUAL PARADE. SUPPORT THE TROOPS AND CELEBRATE THE GREATEST FREEDOM EVER.

Senior Activities

Meadows Place Parks and Recreation has joined with the Sugar Land Parks and Recreation Department to offer field trips/classes and activities for seniors citizens. All events will be offered at the Sugar Land Community Center unless stated otherwise. A calendar of daily events is available at the Sugar Land Senior Center, which can be reached at 281-275-2893, or you can email them at seniors@sugarlandtx.gov

**Please Note* Adventure/Trip Policies*

Fees are due two weeks prior to any one-day adventure. Adventures that do not meet a minimum number of participants two weeks prior will be canceled. Overnight adventures are due one month prior. Overnight adventures that do not meet the minimum number of participants one month prior will be canceled.

UPCOMING EVENTS

SENIOR SWIM CLASS COMING SOON!

Tuesday-Friday June 10-20 or July 8-18 at 10am to 10:45am

Class will be instructed at the City Park Pool. Afraid of the water? Been a while since you have had swim lessons? Just want to brush up on your swim strokes? Then join us at the City Pool for swim lessons just for the young at heart. Each session is for 8 days and just 45 minutes long. Price: \$57 and registration begins May 1st.

BOOGIE BASH!

Thursday, June 12th 5-8pm

Join us as we honor those who have fought for our country and celebrate Flag Day! Come dance the night away or just listen to the smooth sounds of the Johnny Dyson Band. Pre Sale ticket prices are \$7 single/ \$9 couple. Ticket prices at the door are \$8 single / \$10 couple.

PARAGON CASINO!

Tuesday and Wednesday, June 17 & 18, depart at 7am

We are headed back on our annual adventure filled journey to the newly renovated Paragon Casino in Marksville, LA. Price is \$73 single/ \$60 double per person. Price includes transportation, hotel, \$20 cash perks and a \$10 coupon for food. Registration begins April 7.

CASINO NIGHT!

Tuesday, June 24 from 5 to 9pm

The Sugar Land Speakeasy will once again open its doors for a night of games and fun. Dealers will be on hand to teach you the basics of poker, roulette, craps and blackjack. No speakeasy would be complete without a few non-alcoholic beverages and some light refreshments. At the end of the night, use your winnings to bid on some of our fabulous prizes. We will exchange your non-perishable food items for chips! 10 items or a \$10 donation to Fort Bend Seniors Meals on Wheels gets you \$5000 in chips!

GALVESTON ISLAND MUSICALS

Thursday, June 26, depart at 9am

The group will be going to see Annie Get Your Gun. Price is \$44 and includes transportation and tickets. Registration begins March 24.

GALVESTON ISLAND MUSICALS

Thursday, July 10, depart at 9am

The group will be going to see Country Roads. John Denver's character takes you on a musical journey through the back roads of America as he focuses on what is right with America today. Price is \$63 and includes transportation, tickets and lunch. Registration begins April 7.

Kitchen & Bath Remodeling!

Hamre's

"Serving Fort Bend County Since 1997"



Wood Flooring &
Staircases

Floor Tile

Great Selection of
Carpet

Granite Countertops

STAINMASTER

Always stylish. Always beautiful.

Showers & Backsplashes

Benedettini Cabinetry



Showroom Hours: Monday - Friday • 8:30 am - 4:30 pm

12603 Executive Drive, Suite 800 in Stafford

Off Corporate Drive

281. 494. 9200

www.HamresFloors.com



State lic. & insured
#TACLB 010694E

FRED COMP
Owner

**CASUAL AIR & REFRIGERATION
INC.**

13955 Murphy Road #117
Stafford, Texas 77477

(281) 498-3900
(713) 721-7800

Coddled Critters

LaLainya Thomas

281-728-9001

For Your Peace of Mind I Am:
Insured, Bonded & Red Cross
Pet First Aid & CPR Certified

lala@coddledcritters.com
www.coddledcritters.com

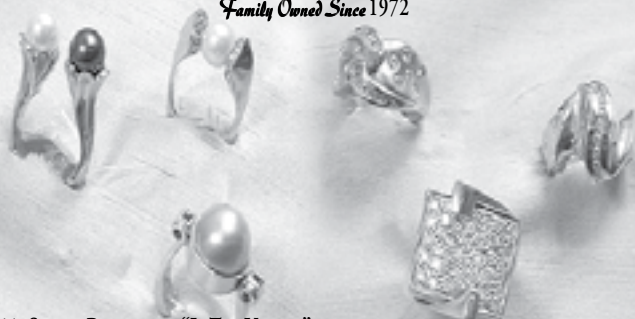
Pet Sitting
Dog Walking
Pet Photography
Pet Websites
Pet Grooming
Pet Party Planning
...and More!



THE GALAXIE JEWELERS

WE CREATE THE UNUSUAL

Family Owned Since 1972



2511 SUNSET BOULEVARD "IN THE VILLAGE"
(713) 521-2511 • FAX (713) 521-3700
www.TheGalaxieJewelers.com

Let us help you with your lawn & maintenance needs!



Toledo LAWN CARE & Maintenance

Please call for free estimates. References upon request.

COMPLETE LAWN MAINTENANCE:

- Mowing
- Edging
- Weeding
- Hedge & Tree Trimming
- Mulching
- Flower Beds
- Gutter Cleaning
- Pressure Washing

Roland Toledo: 713-962-2499

\$\$\$\$\$\$\$\$\$\$\$\$

All Meadows Place Residents Only:

25% OFF Complete Lawn Service

Initial Service Only
WITH COUPON. Offer ends soon - call today.

\$\$\$\$\$\$\$\$\$\$\$\$

Bugs bugging you?
Buzz us!



Mr. Mike

PEST CONTROL

FREE Home Evaluations & Estimates
Not valid for WDI reports.

\$100 OFF
Any Complete Termite Treatment
With coupon.

\$25 OFF
Ant & Flea Service
With coupon.

\$49⁰⁰
Initial Roach Service
With coupon.

\$79⁰⁰
House & Yard Spray
With coupon.

MEADOWS PLACE RESIDENT

Locally Owned and Operated...

- ✓ 20 Years of Experience
- ✓ Termites & General Pests
- ✓ Free Inspections
- ✓ WDI Inspections/Reports
- ✓ Insured

Direct: **281-610-1053**
or **281-564-1163**



Offer Ends Soon - Call Today

James O. McDonald

Certified Public Accountant
Serving Our Clients since 1973



Jim McDonald CPA



Income Tax Planning & Preparation

- Estimating & Planning
- Individual
- Businesses
- Sales Tax
- Property Tax
- Texas Franchise Tax
- Estate Tax



Accounting & Bookkeeping for Small & Medium Size Businesses

- Business and Personal Financial Statements.
- Monthly Bookkeeping.
- Assist in Selection of Accounting Software.
- Financial Analysis and Planning

"We are committed to providing high quality accounting service at reasonable cost. Allow us to provide your accounting services!"

Jim McDonald

7100 Regency Square Blvd • Suite 102
Houston, TX 77036 • Phone: (713) 771-4628 • Fax: (713) 532-9316



HOME REMODELING SERVICES

- * Painting Int/Ext
- * Ceramic Tile
- * Hardwood Floors
- * Sheetrock
- * Fences
- * Roof Repair
- * Doors
- * Windows
- * Carpentry
- * Decks

SPECIAL

HARDI PLANK SIDING

\$3.95 PER SQ. FT.

Call: Jim Office: 281-495-6157
Free Estimates Cell: 281-235-6258

Special events for you and your family at Sugar Grove!

Vacation Bible School

For the entire family!

David: A Man after God's Heart
June 22-25 6:30-8:30 PM

- ◆ Children's Classes *through 6th grade*
- ◆ Special Class & Events for Teens each evening
7th-12th grade www.radiantway.net
- ◆ Adult Classes:

■ *Principles for Living the
Abundant Life From King
David*

by Richard Fancher

■ *The Unexpected*

Parenting Lessons of King David

by Tim Shoulders

*Outstanding
Classes and
Entertaining
Theatrical
Production!*

Events for Children at Sugar Grove this Summer



- ◆ **Sweet Pea Day Camp**
July 28-August 1
for children potty trained through 2nd grade.
9 AM—3 PM \$50
- ◆ **Camp Imani**
August 10-15
Summer camp near Bandera, TX for students that have completed 2nd through 5th grade. \$150
- ◆ **Wings of Eagles**
Come join us as we learn about God and His love for us each Wednesday at 7 PM this summer for children nursery through 6th grade.
No Charge.



Come celebrate Sugar Grove's 10th year in the Meadows Place community at the
Community Cook Out

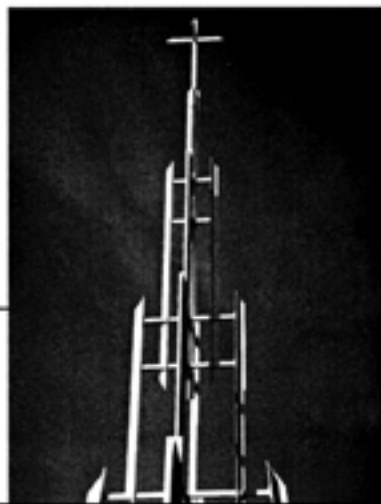
Saturday, August 16, 2008
4:00-6:30 PM

Christmas Eve Service
Celebrating the Risen Savior!

Sugar Grove is an independent non-denominational Christ-centered church.

Treat In a Trunk

October 31
A community event for children



Sugar Grove Weekly Schedule

- ◆ **Worship**
Sunday 8:30 & 11 AM
- ◆ **Bible Classes for all ages**
-9:50 AM Sunday
-7:00 PM Wednesday

Sugar Grove Church of Christ
11600 West Airport Blvd.
Meadows Place, TX 77477
West Airport @ South Kirkwood

For more information contact us at 281-530-9651 or online at www.sugargrove.org

ANITA MILNE

RE/MAX SOUTHWEST PRESENTS
HOMES SOLD AND NEW ON THE MARKET



11627 DORRANCE



11259 MONTICETO



11610 SCOTTSDALE



11510 SCOTTSDALE



11614 BRIGHTON



11702 DORRANCE



ANITA MILNE
(281) 413-9732 DIRECT
anita@anitamilne.com



City of Meadows Place

One Troyan Drive • Meadows Place, TX 77477
(281) 983-2950 • Fax (281) 983-2940

MAYOR..... **Charles Jessup** (281) 568-3461
e-mail: mayor@cityofmeadowsplace.org
ALDERMAN..... **Heidi Case** (281) 561-7351
e-mail: alderman1@cityofmeadowsplace.org
ALDERMAN..... **Terry Henley** (281) 530-7136
e-mail: alderman4@cityofmeadowsplace.org
ALDERMAN..... **Charles Kulhanek** (281) 564-1938
e-mail: alderman2@cityofmeadowsplace.org
ALDERMAN..... **Rick Staigle** (713) 446-4566
e-mail: alderman5@cityofmeadowsplace.org
ALDERMAN..... **Dave Wilkens** (281) 240-7887
e-mail: alderman3@cityofmeadowsplace.org
CITY SECRETARY..... **Elaine Herff**

Community Center Rental

Building Capacity 165

Tables and chairs to accommodate your party.

Food /no alcohol \$150.00
Food and alcohol..... \$250.00
Non-residents add..... \$100.00
Community Pool Rental.....\$300.00
(Maximum time allowed is 3.5 hours)

COMMUNITY CENTER / POOL COMBO
Available for rental May 17 – September 1 2008

Rent both and receive a discount of \$50.00

CALL PARKS AND RECREATION TO

SCHEDULE YOUR EVENT

281-983-2935

monya@cityofmeadowsplace.org

terry@cityofmeadowsplace.org

EMERGENCY..... 9-1-1
CITY HALL (9:00 a.m. - 4:00 p.m.) Mon-Fri.....(281) 983-2950
POLICE DEPARTMENT / 24 Hours.....(281) 983-2900
FT. BEND COUNTY SHERIFF.....(281) 342-6116
WATER AND SEWER.....(713) 405-1750
FT. BEND COUNTY COURTHOUSE.....(281) 342-3411
ANIMAL CONTROL.....(281) 342-1512
PARKS AND RECREATION DEPARTMENT.....(281) 983-2935

Street Light Repair

713-207-2222 or www.centerpointenergy.com



One Troyan Drive • Meadows Place, TX 77477

We've Made a lot of Memories in 25 Years!

Join the Celebration by volunteering!



**Remember when Splash Day
had a dunking booth and cake?**



Prsrt Std
U.S. Postage
PAID
Stafford, TX
Permit No. 36