

**COMMENTS FROM THE MAYOR**  
By Charles Jessup



***New Training Center***

Meadows Place new Police Training and Emergency Operations Center is on its way! Permits have been pulled, plans to get water and power to the center are being completed and, weather permitting, construction should be underway shortly after you receive this newsletter. This 2800 sq. ft. facility

will be located on city property next to the water plant on West Airport - right across from the park. You might remember we made the very good decision to allow our previous training center to be used by Fort Bend EMS and the permanently stationed fire fighters which protect Meadows Place. This meant we needed a new facility. Police records indicate we can expect our new facility to see some sort of usage 135 days a year, with even more demands already being discussed. Once completed, the city will hold an Open House and you are invited. Watch the city website and Facebook page for the date.

***Meadows Place Employee Training***

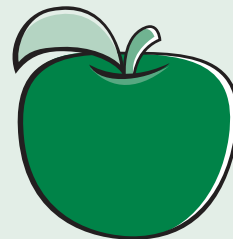
After I talked to Chief Stewart, who was about to leave for a week for Police Chief's training, I began to reflect on the City of Meadows Place training practices. I asked myself "Is employee training important to Meadows Place". The answer of course is a resounding "Yes"! Knowledge and continued skills development is as vital to a municipality as it is to any other organization and in some instances it is required by law. Even when not required, Meadows Place Staff and Council recognize it takes an intentional effort to build a more efficient, effective and highly motivated team and right now, we have a great team. Training enhances the city's competitive position and improves employee morale which benefits us, the residents, and those doing business with the city.

Even in this fast paced information age, Meadows Place is responsible for meeting criteria of the continuous flow of new laws and ever-changing regulations.

*(Continued on page 3)*

**BAC TO K  
SCHOO L**

**AUGUST 22nd**



**DRIVE SLOWLY**

**WATCH FOR CHILDREN**

**NO CELL PHONES IN SCHOOL ZONES**

**CITY CALENDAR**

**Meadows Place**

**Aug. 23 City Council Workshop - 6:00 p.m.  
Regular Council Meeting - 7:30 p.m.**

**Fort Bend ISD**

**Aug. 6 Annual PTO/Booster Club Meeting  
Aug. 15 Regular Board Meeting - 6:00 p.m.  
Aug. 22 First Day of School**

# Did You Know?...

**Did You Know...** this Independence Day we had a lots of wonderful red white and blue decorations throughout the city, especially along the parade route. Thank You to everyone who put up decorations and Thank You Scouts for putting up all those flags. They looked wonderful blowing in the breeze making the whole city looked great. Then, as they do every year, The Meadows Home and Garden Club selected three homes to honor for their patriotic decorations. This year, Rick & Sue-Ella Mueller took 1st place, Barbara Tansey took 2nd with Jim and Lyn Sefociv taking home the prize for 3rd. Thanks to our winners and to everyone who put in the time and effort to decorate their homes. We all benefit, and they serve as part of the fabric that knit our community together.

**Did You Know...** Commissioner Grady Prestige made the Meadows Place 4th of July parade the feature article in his July Newsletter? Amongst other accolades, Commissioner Prestige said our parade is “Truly a small town parade, participants included lots of red, white and blue, youth floats and tons of bikes & kids.” We all know that, but it was fun to see in writing in a County publication. Thank You Commissioner.

**Did You Know...** Meadows Place is always looking for photos for the official city Facebook page banner? There have been some great ones, but we need one for next month, and the month after that so if you take a good a good one, send it in, along with your contact info. Check out the current city Facebook banner photo...

**Did You Know...** Meadows Place Parks are getting quite a reputation? A good one. Between the Slip and Slide Kickball, dinosaurs in the parade, Kayaking in the lake, and other new programs, Meadows Place is being talked about as a place that truly tries to provide the type of recreation its residents want and enjoy. Thanks to

our Park Director, the parks staff and your City Council for providing such wonderful recreation opportunities and parks facilities. If you haven't been to the park in a while, go check it out... and then there is this Pokémon-Go thing... I guess the whole world knows about us now!!!

**Did You Know...** Correction... It wasn't Kali Shaw that went to Orlando to compete in the AAU National Volleyball Championships, it was her younger sister, 12 year old Taryn. Kali will be a sophomore this fall, still with a full ride playing for the Sagu Lions, but it looks like Taryn is following in family footsteps, Taryn's team won their bracket in the “Emerald” division and went deep into the playoffs. Congratulations Taryn, and sorry about the confusion, it's just that you are all so successful it is easy to get you mixed up...

**Did You Know...** Boy Scout Jimmy Valle was at City Council meeting and opened the Council meeting with the pledge of allegiance? It is always an honor to have a Scout attend a Council meeting but it is especially nice when they open the meeting with the pledge. Thank You Jimmy. You are the type of young leader that helps make Meadows Place... *Your Place for Life!*

**Did You Know...** now that the base repairs have been made on Dorrance, Public Works Director Danny Segundo is waiting on the Ft. Bend Road and Bridge Dept. to find an opening to come do the asphalt overlay?

**Did You Know...** Parks Director Colene Cabezas has a fun fall planned for us, including an Oktoberfest festival? I can't wait but I hope the weather is cooler! In the meantime, let's all have fun at the Meadows Place Food Festival on Sat. August 6th

**Did You Know** is for YOU. To get something in Did You Know, drop us a note at City Hall or email: [mayor@cityofmeadowsplace.org](mailto:mayor@cityofmeadowsplace.org).

**Did You Know...** Texas Direct Auto is has merged with a company called Vroom. When I heard this I was a bit concerned, but Mike Welch and Rick Williams still office in Meadows Place and are a driving force in growing the new company. Thankfully, they continue to be great corporate neighbors in so many ways. In addition to substantial financial participation in the repairs you see on Dorrance, Texas Direct Auto supplied several cool cars and trucks for use in our 4th of July parade. Thank You Mike, Rick and Texas Direct Auto for helping make Meadows Place... *Your Place for Life!*

*(Comments From The Mayor continued from page 1)*

This means in a small city like ours, training, and cross training, is vitally important. I am proud to say that Meadows Place encourages employee development which allows our fantastic staff to deal with activities necessary to perform their duties and make Meadows Place the most effective and efficiently run city it can be. Our wonderful employees are a big reason Meadows Place is... **Your Place for Life.**

### ***Meadows Place EDC is on the Move***

There are changes happening within our Meadows Place Economic Development Corporation (EDC) and the future looks bright. After years of dedicated service, though staying on the board, Terry Henley has resigned as EDC President. Bob Graf was elected as the new EDC President; Harry Hamilton the VP. A 30 year resident and Commercial Real Estate Broker, Bob Graf is the former Director of Economic Development in Missouri City, and is very well respected in the field of Economic Development. Bob played a principal role in bringing Aldi to Meadows Place. Recently meeting with a group of developers, Bob has commissioned a land planner to put together some options for the City of Meadows Place to take to the owner of the 9.4 acres available along West Airport. In addition, Bob represents Meadows Place and Meadows Place EDC at several local, State and Regional EDC organizations. Bob puts in lots of hours, works well with the staff, has the trust of Council and is the right choice to lead the EDC into the future. He will be helped by newer EDC Directors like Matt Walker who has a strong interest in Commercial Development and Kurt Kopzynski. Kurt was the Project Coordinator at Astin Redevelopment where he led projects for the revitalization of downtown Bryan, Texas. Kurt, a realtor, is a member of the Meadows Place Community Development team, active in the community and serves as the EDC representative to the Fort Bend Chamber of Commerce. Thank You, Bob, Matt, Kurt, Harry and all our fantastic EDC directors!



**Our Business Neighbors are a very important part of the City. This column is dedicated to those businesses.**

Texas has both a state and a municipal sales tax. Meadows Place businesses contribute to our city through the municipal sales taxes they collect. This is why we ask you to support our Meadows Place business and why we need to Thank them whenever we can.

## **Thank You to all our Meadows Place Business Partners**

*Follow and support these and all Meadows Place businesses. They need, and deserve, our support.*

*Thank You*

# **COP TALK**

By Chief Gary Stewart

## **You Play a Role in Protecting Our Community**



We are all part of the Meadows Place community. We share everyday moments with our neighbors, colleagues, family, and friends.

It is easy to take for granted the routine moments in our every day—going to work or school, the grocery store or the gas station. However, your every day is different than your neighbor's—filled with the moments that make it uniquely yours. So if you see something you know shouldn't be there—or someone's behavior that doesn't seem quite right—say something. Only you know what is supposed to be in your everyday.

Being informed and alert, in and around our community plays a critical role in keeping the City of Meadows Place safe. "If You See Something, Say Something™" engages the public in protecting "Your Place for Life" through awareness and community involvement.

### **Reporting Suspicious Activity**

To report suspicious activity, contact the Meadows Place Police Department; 24 hours a day/7 days a week Non-emergency 281 983-2900.

Describe specifically what you observed, including:

- Who or what you saw;
- When you saw it;
- Where it occurred; and
- Why it's suspicious.
- You can always ask to speak to a Meadows Place Police Officer

**If there is an emergency, call 9-1-1.**



## **LEAVINGS CONCRETE CO.**

- Patios
- Driveways
- Foundations
- Sidewalks
- Flagstone
- Concrete Pavers
- Stamped Concrete
- Breakout & Removal

**FREE ESTIMATES!**

**713-851-4337**

**drleavings@gmail.com**

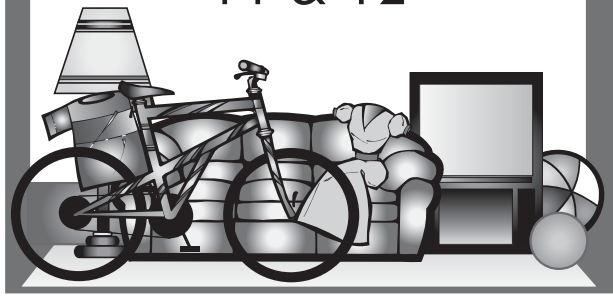


# GARAGE SALE

## Dates for 2016:

August  
12 & 13

November  
11 & 12



### Updates



By Jerry Parker

Thank you all for a beautiful 4th of July Parade! It was hot, but FUN!

Please remember that Meadows Place has an ordinance in place that requires your pet to be on a leash when off of your property. This means that if you wish to walk your dog by our beautiful Lake, the dog **MUST BE ON A LEASH**. Texas Direct Auto has provided our city with a beautiful dog park and is the only legal area that you may let your dog run free.

Our Rental Registry is back in full effect. If you own a home that you rent out in Meadows Place, make sure that you have obtained your Rental License for this year. The deadline may have been July 31st, but you can still contact me at City Hall to register your property and schedule your inspection.

Please look at your trees. Use this as a reminder to trim them over the streets (16') and sidewalks (10').

With school starting August 22nd this year, I want to remind everyone to keep a keen eye out for students walking to school. In addition to no cell phones while you are driving in a school zone, the new Pokémon phone app has captivated a lot of kids and they may be further distracted while walking to school. So please do your best for our children and watch out for them.

### Top Hits from July:

Violation:	Warn/Cit	Comply:
Grass/weeds	18/2	24
Trees / Shrubs	31/1	30
Trailer/Car/Boat	6/1	5
Trash Cans / Debris	23/12	16
General Nuisance	37/1	30
Totals	115/17	105

Please remember, I can't see everything. If you don't let me know what is happening and what is important to you, I can't make it a priority.

Code Enforcement Official • Office: 281-983-2938  
E-Mail: code-enforcement@cityofmeadowsplace



## FOUNDATION REPAIR Remodel & More!

*"A Happy Home Begins with a Solid Foundation"*



Windows • Siding • Flooring • Kitchen & Bath  
Financing Available & Insurance Claims Welcome

**Showroom:** 920 Murphy Rd. # C  
Stafford, TX 77477

**Randy Rose**  
281-397-2299 / 888-461-4669  
cell 832-894-0781  
fax 281-969-5190



LEVELPROHOMESERVICE.COM



## Home & Garden Club

By Bob Dybala, Publicity

Hope all of you are enjoying the heat by not getting out into it very much, except, of course, to check on your yards and plants. This shall pass and we will again be reminded of why we live in Meadows Place and not in Michigan or in the Northeast.

We congratulate the following homeowners selected for July for Yard of the Month. We thank all of you for your efforts to keep Meadows Place "Your Beautiful Place for Life."

### Section I

Vicky and Mike Leremond  
11623 Dorrance

### Section II

Zella and Clyde Little  
11931 Dorrance

### Section III

Jennifer & Gale Beardmore  
12007 Scottsdale

### Section IVN

Anne and Bob Dybala  
11922 Cedar Form

### Section IVS

Laura Aquino  
12306 Level Run

### Section V

Erlinda Aparece  
12219 Meadowglen

By the time you receive this "Newsletter," we will have selected the award-winning yards for August, the last month for this award for this cycle. As always, photos of the winning yards can be found on our website listed below.

As noted before, the Club does not offer educational programs during the summer months but look for announcements for our September meeting. Our program year runs from September through May.

During the summer we like to develop our membership roster in order to be able to publish our Yearbook in September. If you are interested in Home Improvement and/or Gardening and would like to join the Club, please contact Betty Landers (281-495-0080) or Betty Schofield (713-202-6663), the co-chairpersons of our Membership Committee. Dues for an individual membership are \$25.00; for a family membership it is \$35.00. Remember half of your membership dues go into our Scholarship Fund.

We are making plans for our annual Fall Craft Show. We are excited to announce that the show will be held in our Community Center. We haven't set the date yet but that will be forthcoming shortly. We are proud that our Craft Show features only home-made/hand-crafted items. The show is open to all such vendors but we hope that you crafty Meadows Place residents will be there to show your "stuff." It's not too early to contact Joe De Bruyn (281-799-1847), the chairperson in charge of the Show.

Contact us via e-mail at:  
[meadowshomegardenclub@gmail.com](mailto:meadowshomegardenclub@gmail.com)

Visit our web site today.

**[Meadowshomegardenclub.com](http://Meadowshomegardenclub.com)**

### Meadows Place Neighborhood Watch

Where you learn what to look for and learn to protect yourself, your family, your home and your car.



★ *This Month at Neighborhood Watch* ★

### What To Do

## In a Live Shooter Event !

Event Limited to first 55 people.

Door Prizes \* Refreshments

Next Meeting - Wednesday, Sept. 17th in MPPD Training Center - - 11975 West Airport.

Begins promptly at 7.p.m. Ends at 8:00

To report suspicious activity call 281-983-2900  
**Neighborhood Watch makes us Stronger!**



## Classified & Advertising

Anyone wishing to place an ad in the newsletter can contact City Hall for information. All ads are due by the second Friday of each month. The appearance of paid advertising is not an endorsement by the City.

- William Sutherland Handyman Repairs. Appliance, Electrical, Plumbing, Clean out sewer line from 2"-8" pipe. Power washing, interior/exterior, Carpentry work, Painting, Concrete, Tiles. Cell 713-384-2817 / 281-568-0308

- Home Daycare enrolling. 22 years experience. References available. Melanie 281-235-2107.

- AFFORDABLE QUALITY ROOFING - Roof leak? Hail damage? Aging roof? We can help. 22 yrs. experience, fully insured, member in good standing of the Houston area Better Business Bureau and an MP resident. We provide excellent workmanship with an excellent warranty, for a free estimate call (713) 484-9398- ROOFING, SIDING, and WINDOWS.

- Baby Bunny Daycare has openings available! 20 + years' experience in my Meadows Place home. Call or email Margaret for more information. New phone number: 832-803-3694 Email: [margrussell0317@yahoo.com](mailto:margrussell0317@yahoo.com)

- Mary Kay Cosmetics. Call for your complementary skin care or glamour makeover. Carol Evans, Meadows Place - 281-933-8298.

# Annual Drinking Water Quality Report

TX0790025

CITY OF MEADOWS PLACE

Annual Water Quality Report for the period of January 1 to December 31, 2015.

This report is intended to provide you with important information about your drinking water and the efforts made by the water system to provide safe drinking water.

For more information regarding this report contact:

Name Danny Segundo

Phone 281-983-2961

CITY OF MEADOWS PLACE is Ground Water

Este reporte incluye información importante sobre el agua para tomar. Para asistencia en español, favor de llamar al telefono (281) 983-2961.

## Sources of Drinking Water

The sources of drinking water (both tap water and bottled water) include rivers, lakes, streams, ponds, reservoirs, springs, and wells. As water travels over the surface of the land or through the ground, it dissolves naturally-occurring minerals and, in some cases, radioactive material, and can pick up substances resulting from the presence of animals or from human activity. The source of drinking water used by the City of Meadows Place is ground water from the Chicot Aquifer.

Drinking water, including bottled water, may reasonably be expected to contain at least small amounts of some contaminants. The presence of contaminants does not necessarily indicate that water poses a health risk. More information about contaminants and potential health effects can be obtained by calling the EPAs Safe Drinking Water Hotline at (800) 426-4791.

Contaminants that may be present in source water include:

- Microbial contaminants, such as viruses and bacteria, which may come from sewage treatment plants, septic systems, agricultural livestock operations, and wildlife.
- Inorganic contaminants, such as salts and metals, which can be naturally-occurring or result from urban storm water runoff, industrial or domestic wastewater discharges, oil and gas production, mining, or farming.
- Pesticides and herbicides, which may come from a variety of sources such as agriculture, urban storm water runoff, and residential uses.
- Organic chemical contaminants, including synthetic and volatile organic chemicals, which are by-products of industrial processes and petroleum production, and can also come from gas stations, urban storm water runoff, and septic systems.
- Radioactive contaminants, which can be naturally-occurring or be the result of oil and gas production and mining activities.

In order to ensure that tap water is safe to drink, EPA prescribes regulations which limit the amount of certain contaminants in water provided by public water systems. FDA regulations establish limits for contaminants in bottled water which must provide the same protection for public health.

Contaminants may be found in drinking water that may cause taste, color, or odor problems. These types of problems are not necessarily causes for health concerns. For more information on taste, odor, or color of drinking water, please contact the system's business office.

You may be more vulnerable than the general population to certain microbial contaminants, such as Cryptosporidium, in drinking water. Infants, some elderly, or immunocompromised persons such as those undergoing chemotherapy for cancer; persons who have undergone organ transplants; those who are undergoing treatment with steroids; and people with HIV/AIDS or other immune system disorders, can be particularly at risk from infections. You should seek advice about drinking water from your physician or health care providers. Additional guidelines on appropriate means to lessen the risk of infection by Cryptosporidium are available from the Safe Drinking Water Hotline (800-426-4791).

If present, elevated levels of lead can cause serious health problems, especially for pregnant women and young children. Lead in drinking water is primarily from materials and components associated with service lines and home plumbing. We are responsible for providing high quality drinking water, but we cannot control the variety of materials used in plumbing components. When your water has been sitting for several hours, you can minimize the potential for lead exposure by flushing your tap for 30 seconds to 2 minutes before using water for drinking or cooking. If you are concerned about lead in your water, you may wish to have your water tested. Information on lead in drinking water, testing methods, and steps you can take to minimize exposure is available from the Safe Drinking Water Hotline or at <http://www.epa.gov/safewater/lead>.

## **Information about Source Water Assessments**

A Source Water Susceptibility Assessment for your drinking water source(s) is currently being updated by the Texas Commission on Environmental Quality. This information describes the susceptibility and types of constituents that may come into contact with your drinking water source based on human activities and natural conditions. The information contained in the assessment allows us to focus source water protection strategies.

For more information about your sources of water, please refer to the Source Water Assessment Viewer available at the following URL: <http://www.tceq.texas.gov/gis/swaview>

Further details about sources and source-water assessments are available in Drinking Water Watch at the following URL: <http://dww2.tceq.texas.gov/DWW/>

Source Water Name	Type of Water	
1 - 11803 S KIRKWOOD	11803 S KIRKWOOD	GW
2 - 12000 STILLES	12000 STILLES	GW
3 - 11975 W AIRPORT	11975 W AIRPORT	GW

### System Susceptibility Summary

**Asbestos – Medium**

**Cyanide – Low**

**Metals – High**

**Microbial – High**

**Minerals – High**

**Radiochemical - Low**

**Sytheic Organic Chemicals - High**

**Disinfection Byproduct - Low**

**Volatile Organic Chemicals - Medium**

**Drinking Water Contaminate Candidate - High**

**Other - Medium**

## 2015 Regulated Contaminants Detected

### Lead and Copper

Definitions:

Action Level Goal (ALG): The level of a contaminant in drinking water below which there is no known or expected risk to health. ALGs allow for a margin of safety.

Action Level: The concentration of a contaminant which, if exceeded, triggers treatment or other requirements which a water system must follow.

Lead and Copper	Date Sampled	MC LG	Action Level (AL)	90th Percentile	# Sites Over AL	Units	Violation	Likely Source of Contamination
<b>Copper</b>	08/07/2013	1.3	1.3	0.126	0	ppm	N	Erosion of natural deposits; Leaching from wood preservatives; Corrosion of household plumbing systems.
<b>Lead</b>	08/07/2013	0	15	1.49	0	ppb	N	Corrosion of household plumbing systems; Erosion of natural deposits.

### Water Quality Test Results

Definitions: The following tables contain scientific terms and measures, some of which may require explanation.

Avg: Regulatory compliance with some MCLs are based on running annual average of monthly samples.

Maximum Contaminant Level or MCL: The highest level of a contaminant that is allowed in drinking water. MCLs are set as close to the MCLGs as feasible using the best available treatment technology.

Maximum Contaminant Level Goal or MCLG: The level of a contaminant in drinking water below which there is no known or expected risk to health. MCLGs allow for a margin of safety.

Maximum residual disinfectant level or MRDL: The highest level of a disinfectant allowed in drinking water. There is convincing evidence that addition of a disinfectant is necessary for control of microbial contaminants.

Maximum residual disinfectant level goal or MRDLG: The level of a drinking water disinfectant below which there is no known or expected risk to health. MRDLGs do not reflect the benefits of the use of disinfectants to control microbial contaminants.

MFL million fibers per liter (a measure of asbestos)

na: not applicable.

NTU nephelometric turbidity units (a measure of turbidity)

pCi/L picocuries per liter (a measure of radioactivity)



**Water Quality Test Results**

**ppb:** micrograms per liter or parts per billion - or one ounce in 7,350,000 gallons of water.

**ppm:** milligrams per liter or parts per million - or one ounce in 7,350 gallons of water.

**ppt:** parts per trillion, or nanograms per liter (ng/L)

**ppq:** parts per quadrillion, or picograms per liter (pg/L)

**Regulated Contaminants**

Inorganic Contaminants	Collection Date	Highest Level Detected	Range of Levels Detected	MCLG	MCL	Units	Violation	Likely Source of Contamination
Arsenic	2014	4.7	3.6 - 4.7	0	10	ppb	N	Erosion of natural deposits; Runoff from orchards; Runoff from glass and electronics production wastes.
Barium	2014	0.218	0.195 - 0.218	2	2	ppm	N	Discharge of drilling wastes; Discharge from metal refineries; Erosion of natural deposits.
Fluoride	2014	0.26	0.22 - 0.26	4	4.0	ppm	N	Erosion of natural deposits; Water additive which promotes strong teeth; Discharge from fertilizer and
Nitrate [measured as Nitrogen]	2015	0.32	0.1 - 0.32	10	10	ppm	N	Runoff from fertilizer use; Leaching from septic tanks, sewage; Erosion of natural deposits.
Selenium	2014	12.5	5.1 - 12.5	50	50	ppb	N	Discharge from petroleum and metal refineries; Erosion of natural deposits; Discharge from mines.
Radioactive Contaminants	Collection Date	Highest Level Detected	Range of Levels Detected	MCLG	MCL	Units	Violation	Likely Source of Contamination
Beta/photon emitters	2014	8.4	5.1 - 8.4	0	50	pCi/L*	N	Decay of natural and man-made deposits.

\*EPA considers 50 pCi/L to be the level of concern for beta particles.

Combined Radium 226/228	2014	2.3	1.9 - 2.3	0	5	pCi/L	N	Erosion of natural deposits.
Gross alpha excluding radon	2014	16.6	4 - 16.6	0	15	pCi/L	N	Erosion of natural deposits.
Uranium	2014	14.6	8.6 - 14.6	0	30	ug/l	N	Erosion of natural deposits.
Chlorine	2014	3.7	1.0 - 4.0	4	4	mg/l	N	Additives used to control pathogens.

**Elect** **FRANK J. FRALEY** *Democrat*  
**For 240<sup>th</sup> District Court Judge**  
**Fort Bend County**  
*Equality in the Court Room*  
Pol. Ad Paid for by the Frank Fraley Campaign

**MANN REAL ESTATE**  
**HANK MANN**  
*Broker/Owner*



1939 Cascade Ct.  
 Sugar Land, TX 77479  
 cell: 713-582-1654  
 www.har.com/hankmann  
 hank.mann@earthlink.net

**Violations Table**

Lead and Copper Rule			
The Lead and Copper Rule protects public health by minimizing lead and copper levels in drinking water, primarily by reducing water corrosivity. Lead and copper enter drinking water mainly from corrosion of lead and copper containing plumbing materials.			
Violation Type	Violation Begin	Violation End	Violation Explanation
LEAD CONSUMER NOTICE (LCR)	12/30/2013	2014	We failed to provide the results of lead tap water monitoring to the consumers at the location water was tested. These were supposed to be provided no later than 30 days after learning the results.



"Proudly Servicing Homes in Your Area for 28 Years!"

**CASUAL AIR, INC.**

"Fair Prices, Quality Work"

\* Please have your furnace checked for proper operation by a licensed H.V.A.C. professional before turning them on! \*\* A very small price to pay for you and your loved ones safety.

**PREVENTIVE MAINTENANCE TIP ~ FYI:**

Have the duct work checked in your homes attic space for air leaks. If your home is 25-30 years old the typical "flex duct" originally installed by builders can deteriorate & literally "fall apart" due to constant heat & humidity of attic conditions in our area. This can hit you hard in the "pocketbook" (i.e. very comfortable attic space!). Not to mention your system has to work harder to comfortably heat & cool your home. Having your duct work checked can be easily scheduled during your annual fall furnace inspection. **Call Now** before you make the switch to heat.

281.498.3900  
Stafford, TX 77477

**FRED COMP, Owner**

State Lic. & Insured  
#TACLB 010694E

**Free Estimates**

Visa, MC, Discover, AMEX

Commercial-Residential  
Insured

**ODD JOB FENCE COMPANY**

*Fences Erected, Repaired & Rebuilt*

Tim Tate  
tate006@gmail.com  
281-498-7256

*Small, Big, Odd*

P.O. Box 1985  
Stafford, TX 77477

*Something for Everyone!*

**KIDS EAT FOR 99¢**

Mon - Wed

One 99¢ kids meal per adult entrée purchased. Not valid with any other discounts or \$18.99 menu.

*Happy Hour*

**\$2.99 Ritas**

Mon - Fri

11am - 6pm



*We Offer Fajita Party Packs!*

12203 Murphy Road • Stafford, TX 77477 • 281.568.9626

**FREE ENTRÉE**

Buy one entrée & two beverages, get one entrée FREE!



www.micasaole.com

Meadows Place  
Newsletter

Valid only at 12203 Murphy Road, Stafford. Excludes alcohol, tax and gratuity. No cash value. Not valid with any other offer or 18.99 menu. Free entrée is of equal or lesser value up to \$8.00 One coupon per visit per table. Valid April 1st - June 30th, 2016.

NOT VALID WITH 99¢ RITAS.

**FREE ENTRÉE**

Buy one entrée & two beverages, get one entrée FREE!



www.micasaole.com

Meadows Place  
Newsletter

Valid only at 12203 Murphy Road, Stafford. Excludes alcohol, tax and gratuity. No cash value. Not valid with any other offer or 18.99 menu. Free entrée is of equal or lesser value up to \$8.00 One coupon per visit per table. Valid April 1st - June 30th, 2016.

NOT VALID WITH 99¢ RITAS.

**99¢ RITAS!**

**HOUSE RITAS ON THE 5<sup>TH</sup>, 15<sup>TH</sup> & 25<sup>TH</sup> OF EACH MONTH**

*(while promotion lasts)*



Meadows Place has many ways for you to get out, get active, and get involved. Stay current with the latest program and event information by checking the City website, Facebook and monthly Newsletter. We are always open to hear your ideas and suggestions, so please call or email your comments to [parksdirector@cityofmeadowsplace.org](mailto:parksdirector@cityofmeadowsplace.org) or 281.983.2935.

## PROGRAM REGISTRATION

There are two ways to register for our programs:

- 1) Forms can be found on-line at [cityofmeadowsplace.org](http://cityofmeadowsplace.org) under the department tab / parks and recreation / programs. Make checks payable to City of Meadows Place then mail to, 1 Troyan Dr. , Meadows Place, TX 77477
- 2) You may also register in person at City Hall, Monday – Friday between 9am – 4pm. If after hours place form & payment in the night drop.

## RENTALS

If you are looking for a location to host a meeting, celebration or family gathering, the Community Center is a great local option. It can accommodate up to 160 occupants. Tables and chairs are provided with rental. We also offer seasonal rentals of the community pool. Consult the website for more details.

## TENNIS COURT / PICKLEBALL ACCESS

Resident Access Cards are available for purchase at City Hall Monday – Friday 9am-4pm. Cards are \$50. Cards are valid through May of each year.



## CHAIR YOGA

Soothe achy joints and Increase your range of motion with this gentle seated yoga class, adaptable to your comfort level. Specifically designed for the 55+ crowd, but all ages are welcome! Chairs will be provided.

**8/3 – 8/31, Every Wednesday in August, 9am @ Community Center, (All Ages) \$3 per class**



## RESTORATIVE FLOOR YOGA

Center your mind and body in this calming, breath-focused class. Build your endurance with standing postures that transition into floor work and an extended time of silent meditation. No previous yoga experience necessary.

**8/2 – 8/30, Every Tuesday in August, 6pm @Community Center, (All Ages) \$5 per class**



It's an energetic workout that will get your heart pumping. Come and get into shape while having fun. No experience necessary just the desire to feel better and improve yourself. **Must pre-register.**

**8/10 - 8/31 Wednesdays 7:30- 8:30pm @ Community Center \$5 per class / Punch cards available to pre-purchase and use for any Wednesday class.**



### FITNESS CHALLENGE

Let's move this summer and change our disposition. We have three months to make an impact and get you performing better. Take the challenge and be changed...I dare you!

Classes will consist of a mixture of fitness formats:  
**Core Conditioning (abs) / Dance / Sports Conditioning**

**8/9 – 8/18, 10am Tues & Thurs \$5 per class, Walk-ins accepted @ Community Center**

**Fitness Challenge is designed for College, High School and Middle School Students / Both Male and Female.**



The Community Garden meets twice a month to plant, till and weed the beds. They meet the second and fourth Saturday of the month at 9am. If you are interested in learning how to grow and tend a garden, just show up and you will be taught. Speakers, events and family plot planting will be scheduled throughout the year so watch for updates in the newsletter.

**2<sup>nd</sup> & 4<sup>th</sup> Saturday monthly, 9am @ Community Garden**

# WATER AEROBICS

### WATER AEROBICS

This is a sixty minute cardiovascular workout in the pool, which utilizes water resistance to improve cardiovascular fitness, muscular endurance, and flexibility. You determine your own intensity level by deciding how hard to manipulate the water.

**8/ 2 – 9/2, 7pm, Tues & Thurs. \$60/session; \$7.50 per class**



### H2O FLEX

This Low intensity / Low impact workout will help strengthen your core muscles and is designed to improve flexibility, range of motion and balance as well as stamina. Ideal for all fitness levels, non-swimmers included.

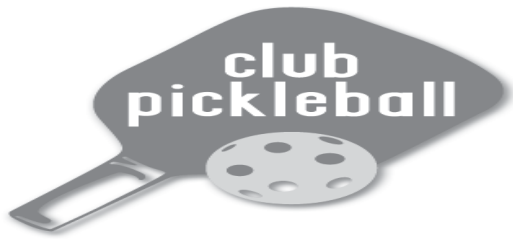
**8/2 – 8/18 11 am Tues & Thurs \$7.50 per class**



### LAKE KAYAK DAY

Have you completed Kayak Skills Training and would like to kayak at the lake for free, then come during open kayak day.

**8/10, 5-7pm @ McGrath Lake (Anyone previously certified)**



**PICKLEBALL OPEN PLAY**

The rules are posted and the courts have been striped for play. Find a partner and enjoy this fun sport. Equipment is provided on site. Court passes can be purchased at City Hall M - F / 9-4pm for year round access.

**Tuesday and Thursday Courts reserved for Pickleball**



Tennis classes offered by Fort Bend Tennis Services, since 1979. **Register online at [fortbendtennis.com](http://fortbendtennis.com)**

**Junior Beginner/Adv. Beginner** **6:00-7:00pm**  
**Monday & Wednesday** **\$95/month**

**Juniors**, age 7-12 years. Beginner/Advanced Beginner: For students with little or some experience. You will learn the basic shots of the game, ball handling, movement and keeping score

**Adult Novice Class** **7:00-8:30pm**  
**Monday & Wednesday** **\$135/month**

**Adults**, age 18 & older. Adult Novice: For students with little or some experience or who have not played in many years and are ready to return to the game or improve their basic shots and movement. You will learn/review the basic shots, movement and playing the game.

Class size: minimum 4, maximum 8 per Instructor.

**Pre-registration and raquet required. Sign up online at [fortbendtennis.com](http://fortbendtennis.com)**



Sharpen your mind and strengthen your body with Hall of Famer, Master Jenny Pless. She teaches all levels of skill from basic to advanced.

**Mon &/or Wed. @ Community Center / Must pre-register**

**Session I - 9/7-10/26** (no class 10/17)  
 5-6pm (4-12 yrs. old)  
 6-7pm (13+ – adult)  
 7 classes for \$35.00  
 14 classes for \$69.00

**Session II - 11/2-12/14** (no class 11/23)  
 5-6pm (4-12 yrs. old) 6-7pm (13+ - Adult)  
 6 classes for \$30.00  
 12 classes for \$59.00



American Society of Karate teaches American Karate to ages 5 – 70yr in a positive ever-changing system. Its goal is to not be the largest, but to be the best. Instructors: 4<sup>th</sup> Degree Black Belt, Steve Puma and 3<sup>rd</sup> Degree Black Belt, Michael Puma. May try 1<sup>st</sup> class for free w/signed waiver. **Must pre-register. @ Community Center. Uniform Fee paid to instructor \$30**

**9/15 -12/8, 6:30-7:30pm Thursdays (5-12yr) \$50**  
**9/15 –12/8, 7:30-8:30pm Thursdays (13yr &up) \$50**



THINGS TO KNOW

1. Have fun but be aware of your surroundings.
2. Look up when walking and crossing streets.
3. At night do not play alone.
4. Be respectful of others that are not playing.
5. Call 911 if you need to.



## BOOKWORM CLUB

Join an epic fun summer reading club for 2<sup>nd</sup> thru 9<sup>th</sup> grade. Groups will be divided by age. Bring a friend. For more info, contact Zekia or Zorian Campbell at [ac23cc@aol.com](mailto:ac23cc@aol.com).

8/5- 8/12, Every Friday, 1:30-2:45 @ Community Center (Ages 2<sup>nd</sup> thru 9<sup>th</sup> grade) \$10 per month.



## SMASH PAINT ART

Do you love crafts? Come learn the art of Smash Paint while making your own keepsake back-to-school bag. All supplies will be provided. **Pre-Registration Required.**

8/10, 1:00-2:30pm @ Community Center (7-14yr) \$7



## PLAY-WELL LEGO CAMP

Kids are natural engineers. PlayWell helps them realize it. Kids dive into our classes and exercise their innate gift for building. They come away understanding fundamental principles of engineering and physics. The experience boosts their confidence, creativity and ability to collaborate. Kids can't get enough. Limited spots, sign up early. **5 day camp \$125 MUST REGISTER**

**Ages 5 & 6yrs (9 am – 12 pm)**  
8/8 – 8/12 Pre-Engineering using LEGO®

**Ages 7-12yrs (1 pm – 4 pm)**  
8/8 – 8/12 Bashem' Bots using LEGO®



## MEADOWS PLACE IMPROVES RECYCLING

Meadows Place is now providing an additional FREE recycling service for the City. Simple Recycling comes on Fridays along with the regular recycling to pick up the specially marked boxes and bags of clothing, appliances, durables, and furniture. Simply place items in the green bags or use the green sticker to indicate Simple Recycling items. If you need more information or additional bags at no cost, please contact (866) 835-5068 or [info@simplerecycling.com](mailto:info@simplerecycling.com).



## THANK YOU FOR CARING FOR OUR PARKS!

Did you know by City Ordinance every dog owner is required to pick up their dog's poop when in public? It is also required that all dogs must be leashed when in public.

**Noncompliance will result in a fine up to \$500.**

For more information, contact 281-983-2938 or [code-enforcement@cityofmeadowsplace.org](mailto:code-enforcement@cityofmeadowsplace.org)



**SUMMER POOL HOURS**

Tuesday -Saturday	11:00am - 8:00pm
Sunday	1:00pm – 8:00pm
Mondays	Closed except for holidays
Holidays	12:00pm – 7:00pm

Pool Open weekends only starting August 20th

Pool Closes for Back to School September 6th

**POOL ACCESS WRISTBANDS**

Access bands will be sold at the pool during normal operating hours to **RESIDENTS ONLY**.

**Requirements to purchase pool wristband:**

- MP water bill and TDL showing MP residency
- Adult resident must be present to complete registration card and purchase seasonal wristband.
- \$5 per band per family member. Resident must be wearing band to enter pool area.

**WEEKLY POOL ACTIVITIES**

**Monday Movies:**

12 pm / \$1 for popcorn & lemonade  
August 1, 15

**Wednesday Bingo:**

11 am / \$3 per card  
August 3, 10, 17

**Tuesday and Thursday Lap Swim:**

7-8am / 8-9pm

**Wednesday and Friday Tot Time:**

11-12pm

**Wednesday and Fridays Water Volleyball:**

1-3 pm

**POOL PARTY RENTAL**

It's not too late to book an end of summer pool party! The Meadows Place pool is a perfect venue for parties. You can prepare now by booking your party early through Parks and Recreation. You may schedule a party for after hours or during public swim. Call for rates. 281.983.2935



**BAREFOOT N' FRIDAYS**

**This is it, the last Barefoot N' Friday of the summer. You won't want to miss it!**

Enjoy night swimming, music and fun along with your friends. Meadows Place Police Officers will be on duty throughout the event. Concessions available.

8/19, 8:30 – 11pm @ Community Center Pool, (9-14yrs) \$5



**JULY 4<sup>TH</sup> WINNERS**

**Motorized Entries:**

- Best Commercial –Beard Reality Group, Anita Milne
- Best Youth - Meadows Place Marlins Swim Team
- Best Spirit – Meadows Place Life Guards

**Patriotic Yards:**

- 1<sup>st</sup> Place-Rick and Sue Ella Mueller 12026 Dorrance
- 2<sup>nd</sup> Place-Barbra Tansey 11823 Brighton
- 3<sup>rd</sup> Place-Lynn and Jim Seflovic



**ATTENTION..... INCOMING FRESHMAN AND ALL HIGH-SCHOOL STUDENTS**

Would you like to be a part of a national organization while making a difference in your own community? If so, now is the time to join the Meadows Place Youth Action Council. Serve as the voice of teens in the community, promote leadership through volunteerism, and make a positive impact while having fun with other teens. YAC is a great way to earn service hours and also include on your college application. This is a youth run organization. Teens create the bylaws, set the schedule, and make the plans for service, volunteering and fun. Applications will be accepted throughout the year and can be found on the City website. There is no fee to join.

**2016/ 2017 School year will include YAC Camping Trip, Skeeters Baseball, volunteering at Christmas Memories, Meadows Place Haunting, Family Campout and more. Charitable activities will include food drive, host a color run, beach cleanup, feed the homeless and blood drive host. Attend the first meeting to learn more... September 16, 6-8pm @ the Community Center.**

**YAC HAPPENINGS**

The YAC group was very busy this last year. 32 Members provided over 575 hours of volunteer service and were recognized and awarded 1<sup>st</sup> place in a charity drive to provide shoes for the poverty stricken. They participated in a beach cleanup, Christmas Memories, Old Town Meadows, Splash Night, Family Campout, Bike Rodeo, Baseball Concessions, July 4 Parade, City Council Meetings, State Wide Summit, Pool Party, Dinners, and more. Come and be a part of the fun this year!





FIREFORKS.COM PRESENTS THE

# MEADOWS PLACE FOOD FESTIVAL

AUGUST 6TH FROM 5PM - 9PM

BATTLE  
OF THE  
BANDS CONTEST



DANCESPORT  
DANCE PERFORMANCES

WATERSLIDES AND CHILDRENS  
ACTIVITIES ALL INCLUDED!

TICKETS: \$ 6 ADULTS \$ 4 CHILDREN

VISIT US AND BUY TICKETS AT  
[WWW.MEADOWSPLACEFOODFESTIVAL.COM](http://WWW.MEADOWSPLACEFOODFESTIVAL.COM)



Your Place for Life



FREE TASTINGS  
BETWEEN 5 - 7 FROM



The Bark BBQ



TRADIÇÃO  
BRAZILIAN STEAKHOUSE



AND MORE!

FOOD ALSO AVAILABLE  
FOR PURCHASE ALL DAY

\$1 SURCHARGE FOR CREDIT CARDS AT THE DOOR



# **THANK YOU**

## **TO OUR SPRING 2016**

### **SPONSORS**

**Anita Milne - Beard Realty Group**

**CHI St. Luke's Sugar Land Hospital**

**Comfort Suites Hobby Airport**

**Efficient Computer Systems**

**MANTIS Medical, PLLC**

**Office Max**

**R. E. Chescheir Construction**

**Safety 21**

**Sanchez Energy Corp.**

**Sharpstown Automotive Service Center**

**USW Utility Group**

**Wilcrest Baptist Church**



Visit our website at [www.mppony.org](http://www.mppony.org) for league information.

Bugs bugging you?  
Buzz us!

**Mr. Mike**  
PEST CONTROL



**FREE**  
Home  
Evaluations  
& Estimates  
Not valid for WDI reports

**\$100 OFF**  
Any Complete  
Termite Treatment  
With coupon.

**\$25 OFF**  
Ant & Flea  
Service  
With coupon.

**\$59<sup>00</sup>**  
Initial  
Roach Service  
With coupon.

**\$89<sup>00</sup>**  
House &  
Yard Spray  
With coupon.

MEADOWS PLACE RESIDENT  
*Locally Owned and Operated...*

- ✓ 25 Years of Experience
- ✓ Termites & General Pests
- ✓ Free Inspections
- ✓ WDI Inspections/Reports
- ✓ Insured

Direct: 281-610-1053  
or 281-564-1163  
MrMikePC@sbcglobal.net



*Offer Ends Soon - Call Today*

# Southern Maid Cleaning

Bi-Weekly. Move-In /Out. Residential. Commercial

Contact us TODAY to get your Free Estimate

**Leslye @ 832.655.5842**

Or Visit Our Website:

[Cleanedbysouthernmaids.com](http://Cleanedbysouthernmaids.com)

Mention this ad and receive \$20.00 off your first  
Deep Cleaning

# EASY AS 1-2-3!



# SELL US YOUR CAR!®

 [TEXASDIRECTAUTO.COM](http://TEXASDIRECTAUTO.COM)



Houston

# Replacement Windows

Premium White Vinyl \* Double Pane \* Lifetime Warranty \* Professional Installation \* Home of the Ultimate Energy Saver \* Starting at \$189!!!



### Summer Specials

**\$\$ Huge Savings \$\$**  
Call Now and Ask About  
**FREE Window Upgrades**

**FREE ESTIMATES**

**(281) 458-4081**

[www.WindowCityHouston.com](http://www.WindowCityHouston.com)



# RAY'S

A/C & Heating Svcs.



**Tel: 281-799-2556**

Maintenance \* Service \* Installations

- \* Honest & Fair Prices
  - \* Free Estimates on New Equipment
  - \* No Overtime Charges
  - \* Se Habla Español
- Ray Mendez  
Owner / Technician  
TACL26076E  
Licensed & Insured

Manufacturer's Suggested Annual Maintenance

**Heat check-Up**  
**\$59.00**  
Reg 69.00

**\$150 OFF**  
Any Replacement Equipment  
*Excludes parts*  
Not valid with any other discount or promotion. Offers may not be combined. One coupon per customer.

**\$50.00 OFF**  
Any repair over \$450

Manufacturer's Suggested Annual Maintenance

**A/C Check-Up**  
**\$59.00**  
Reg 69.00

[www.Raysmac.com](http://www.Raysmac.com)  
Financing available

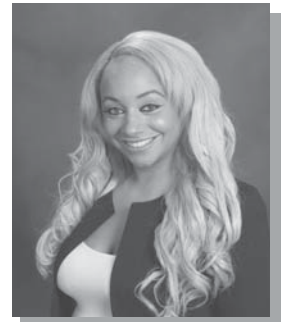
You're welcome to check references  
@ [www.sugarlandnetwork.com](http://www.sugarlandnetwork.com)

**THE GALAXIE JEWELERS**  
WE CREATE THE UNUSUAL  
*Family Owned Since 1972*

2511 SUNSET BOULEVARD "IN THE VILLAGE"  
(713) 521-2511 • FAX (713) 521-3700  
[www.TheGalaxiejewelers.com](http://www.TheGalaxiejewelers.com)

## AMANDA SIMPSON

832.520.9409



**Hardworking!  
Competitive!  
Action Oriented!** [amandasimpson@kw.com](mailto:amandasimpson@kw.com)

**Let me help you get the BEST deal...**

- 👉 Extensive Market Analysis
- 👉 Lifelong Fort Bend Resident
- 👉 Honesty 👉 Integrity
- 👉 Service

**Whether Buying or Selling..  
I will work for YOU!**

**kw SOUTHWEST**  
KELLER WILLIAMS REALTY

Equal Housing Opportunity

Keller Williams Realty Southwest  
Each office independently owned and operated.

**R REALTOR**

**TODAY IS THE DAY YOU CHANGE YOUR LIFE**

**THE END OF SPLIT ENDS**  
NEW

Erastian Blowout Professional Split End Repairing Treatment, the only in-salon service that instantly strengthens, repairs, seals and protects ends for 4 weeks in only 10 minutes!

- ✓ Reconstructs & repairs weak, broken strands.
- ✓ Seals split ends, instantly.
- ✓ Protects against heat styling and future damage.
- ✓ Preserves the shape of precision cuts between appointments.

LOSE THE DAMAGE, ASK YOUR STYLIST, WIN THE LENGTH!

**brazilian blowout**

Brazilian Blowout Service Special  
 \$99 Brazilian Blowout Split End Service \$45  
**20% OFF ON BRAZILIAN BLOWOUT PRODUCTS WITH SERVICE**

## Rosie's Hair Salon

11735 S KIRKWOOD ROAD, SUITE A, STAFFORD, TX 77477

Store 281-498-6000

Rosie 281-935-7208 | Marie 281-536-4758  
 Lisa 713-816-8929 | Dora 281-770-9603

## James O. McDonald

*Certified Public Accountant*  
 Serving Our Clients since 1973



Jim McDonald CPA

### Income Tax Planning & Preparation

- Estimating & Planning
- Individual
- Businesses
- Sales Tax
- Property Tax
- Texas Franchise Tax
- Estate Tax

### Accounting & Bookkeeping for Small & Medium Size Businesses

- Business and Personal Financial Statements.
- Monthly Bookkeeping.
- Assist in Selection of Accounting Software.
- Financial Analysis and Planning

*"We are committed to providing high quality accounting service at reasonable cost. Allow us to provide your accounting services!"*

*Jim McDonald*

7100 Regency Square Blvd • Suite 220  
 Houston, TX 77036 • Phone: (713) 771-4628 • Fax: (713) 532-9316

## LET ME SAVE YOU TIME & MONEY!

*Accurate, efficient and personable accounting services for a reasonable fee.*

### Tax Preparation & Planning Accounting & Bookkeeping

I specialize in small to mid-size businesses including Partnerships, S-corps and C-corps as well as individuals, trusts and gift tax.



**TAMARA L. MIHAIL**  
 CPA, LLC  
 TAX & ACCOUNTING SERVICES

CALL OR EMAIL NOW!  
 (281) 989-5361  
 Tammy@MihailCPA.com

12135 Monticeto Lane  
 Meadows Place, TX 77477  
 www.MihailCPA.com

*Meadows Place Resident*

## Simpson's Tree Service



- Tree Trimming
- Tree Removal
- Senior Citizen Discount!
- FREE Estimates!

**\$50 OFF**  
 All services over \$500  
**\$25 OFF**  
 All services under \$500  
 with coupon only

**Proudly Serving the Greater Houston Area for over 20 Years!**

**Insured for your protection..**  
**www.SimpsonsTreeService.com**

**When Quality Counts...**  
**Call 281.980.0095**

# Houston Restoration Services ROOFING

Call Us Today: (281) 850-4393

[www.HRSroofing.com](http://www.HRSroofing.com)

Due to recent storms your roof may be compromised.  
Call HRS today for a FREE inspection!



- Our roof installers have been with HRS for at least 12 years
  - We are fully insured
  - We are licensed to roof in Meadows Place
  - We provide same day service



"Our Quality of Work is Never Compromised"

# Anita Milne

**BEARD REALTY GROUP PRESENTS MEADOWS PLACE  
HOMES ON THE MARKET FOR JULY**



**12218 Meadow Crest Ct.**



**12114 Dorrance**



**12242 Alston**



**11902 Scottsdale**



**11935 Bloomington**



**11958 River Meadow**



**Anita Milne**

**(281) 413-9732**

**[milneanita@yahoo.com](mailto:milneanita@yahoo.com)**



***I take the stress out of buying or selling your home!***



One Troyan Drive • Meadows Place, TX 77477  
www.cityofmeadowsplace.org

Prsrt Std  
U.S. Postage  
**PAID**  
Stafford, TX  
Permit No. 36

### City of Meadows Place

One Troyan Drive • Meadows Place, TX 77477  
(281) 983-2950 • Fax (281) 983-2940

- Charles D. Jessup, IV...MAYOR** ..... (281) 642-7702  
e-mail: mayor@cityofmeadowsplace.org
- Terry J. Henley...MAYOR PRO TEMPORE**..... (281) 530-7136  
e-mail: alderman4@cityofmeadowsplace.org
- John F. Isbell...ALDERMAN 1** ..... (804) 240-4982  
e-mail: alderman1@cityofmeadowsplace.org
- Kelle K. Mills...ALDERMAN 5** ..... (281) 933-0374  
e-mail: alderman5@cityofmeadowsplace.org
- Steven H. Bezner...ALDERMAN 2** ..... (281) 401-9339  
e-mail: alderman2@cityofmeadowsplace.org
- Rick J. Staigle...ALDERMAN 3** ..... (713) 446-4566  
e-mail: alderman3@cityofmeadowsplace.org

\*\*\*\*\*  
**Courtney Rutherford...CITY SECRETARY**..... (281) 983-2931  
e-mail: crutherford@cityofmeadowsplace.org  
\*\*\*\*\*

- EMERGENCY ..... 9-1-1
- CITY HALL ( 9:00 a.m. - 4:00 p.m.) Mon-Fri..... (281) 983-2950
- POLICE DEPARTMENT / 24 Hours..... (281) 983-2900
- FT. BEND COUNTY SHERIFF..... (281) 342-6116
- WATER AND SEWER ..... (832) 756-2143
- FT. BEND COUNTY COURTHOUSE ..... (281) 342-3411
- ANIMAL CONTROL..... (281) 342-1512
- PARKS AND RECREATION DEPARTMENT ..... (281) 983-2935

#### Community Center Rental

Building Capacity 165

Rental includes tables and chairs to accommodate events

**Food/no alcohol.....\$200.00 Food/with alcohol.....\$300.00**  
(Cash deposit required equal to Rental Fee)

**Community Pool Rental.....\$350.00**  
(after Community Hours, maximum rental time is 3 hours)

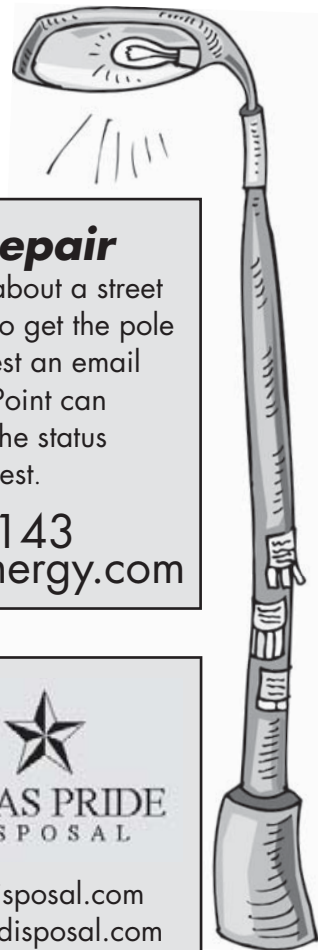
**Non-Meadows Place residents add \$175.00 to above rates**

**Resident Community Center/ Pool Combo Rental**  
Available May - August

Meadows Place residents receive a \$50 discount when renting the Community Center & Pool for the same event.

For rental reservation information, go to [cityofmeadowsplace.org](http://cityofmeadowsplace.org) click on Parks & Recreation, then Community Center

To check availability, call (281) 983-2935 or email: parks3@cityofmeadowsplace.org



**Street Light Repair**  
When calling or emailing about a street light outage, you will need to get the pole number. You may request an email notification so Center Point can keep you apprised of the status of the repair request.  
**1-800-332-7143**  
[www.centerpointenergy.com](http://www.centerpointenergy.com)

**(281) 342-8178**  
M-Th: 8:00-5:00  
F: 8:00-4:00  
  
**TEXAS PRIDE DISPOSAL**  
[www.texaspridedisposal.com](http://www.texaspridedisposal.com)  
[service@texaspridedisposal.com](mailto:service@texaspridedisposal.com)

**Storm Water Hotline**  
Report dumping in storm water drains.  
Only **RAIN WATER** is allowed  
281-983-2932 or report online, see website.  
For updates on Public Works News visit the website.  
[publicworks@cityofmeadowsplace.org](mailto:publicworks@cityofmeadowsplace.org)